

# Port Ludlow *Voice*

Serving the Village of Port Ludlow Since 1998

February 2026



[plvoice.org](http://plvoice.org)



"Let our advertisers know you saw them in **The Voice!**"

**20 YEARS**  
GUIDING YOU HOME.

**RE/MAX First, Inc.**  
*Nikki Casal*  
(360) 301-3384  
WWW.MYAGENTNIKKI.NET

**Port Ludlow's Real Estate Resource - I am the key to your move.**


 **Printery®**  
YES, WE CAN DO IT!

**Creative Design Services, Digital & Offset Printing, Direct Mail Service, Indoor & Outdoor Signage, Custom Apparel Printing**


360.385.1256 • [www.printery.com](http://www.printery.com) • [info@printery.com](mailto:info@printery.com)


**Home Loans Made Simple**


**Experience matters.**  
Apply online or visit our friendly staff at the Port Ludlow Branch.



**Port Ludlow Branch**  
9500 Oak Bay Road

 **Apply Online**

Member **FDIC** 

 **SOUND COMMUNITY BANK**

[soundcb.com](http://soundcb.com) | 800.458.5585

**SEA MARINE**  
FULL SERVICE BOATYARD

**FULL SERVICE BOATYARD**  
ABYC Master Technicians • Haul Out Lift  
Canvas Shop • Full Joinery Shop  
Electrical Repower • Plumbing • Painting  
Winter Storage • Provisions

**SYSTEMS SHOW ROOM & SERVICE CENTER**  
GPS Navigation • Beta Engines • Electronics  
Water Heaters • Heating Systems • Inverters

**BROKERAGE SERVICES**  
Buying a boat? Selling a boat?  
SEA Marine offers full Brokerage Services.  
Contact Sandy Bakken for a consultation.  
<http://seamarineco.com/yacht-brokerage-listings/>

*For all your boating needs!*  
**SEA...the difference.**

  
Sandy Bakken, Broker

**Point Hudson, Port Townsend**  
(360)385-4000 • [seamarineco.com](http://seamarineco.com)

**We're Passionate About Education**

**You're Invited:**  
**Medicare 101 Educational Events**

- In-Person and Virtual Options
- Learn the Basics of Medicare
- Make More Informed Decisions

**KMi Find the schedule on our website!**

  
Tonya Brinkley  
Licensed Agent

**Kristin Manwaring Insurance**

360.385.4400 • [kristinmanwaring.com](http://kristinmanwaring.com)

9526 OAK BAY ROAD, SUITE 100  
PORT LUDLOW

**SALISH COAST MED**  
*Expertise to Redefine Your Skin*

 | Wrinkle Relaxers | Dermal Filler | Microneedling |

[salishcoastmed.com](http://salishcoastmed.com) // book online // text: 206.659.8016

**Mission Statement:** The mission of the *Port Ludlow Voice* is to inform its readers of events and activities within the Village and in close proximity to the Village. We will print news articles that directly affect our local residents.

Published monthly by an all-volunteer staff.

**Send your articles and comments to**  
*editor@plvoice.org*

## In This Issue

News & Community .....	4
Features & Stories.....	11
Arts & Entertainment.....	18
Village News	
Bay Club/South Bay.....	23
Beach Club/North Bay.....	25
Village Council.....	26
Recreation & Sports.....	30
Classified Ads.....	33

## Visit The Voice Online

*plvoice.org*

**Community Updates:** Find information on the website before the printed magazine is available. See breaking news on the Home Page and the Community News section for information on North Bay, South Bay, and PLVC for early news for the Port Ludlow Community. All links contained in the articles are live.

**Expanded Articles:** Read complete versions of articles and media appearing online only.

**Full Content on the Website:** All the content from the magazine is now posted online.

**Letters to the Editor:** Read comments, criticisms, and suggestions from other readers online.

**Advertising Information:** Find out how to place classified and display ads in the magazine. Also find out how to place ads on the web version of the *Voice*.

**Archived Voice Issues Online:** Copies of every issue of the *Voice* beginning in August 1998 and continuing to the present are available on the website at Archive of Issues.

### ON THE FRONT COVER:

Photo by Doug Pulling.



## Port Ludlow Voice

P.O. Box 65077, Port Ludlow, WA 98365 - *plvoice.org*

## Editorial Staff

### Copy Editor

Carol Riley, *criley@plvoice.org*

### News & Community Editor

Doug Pulling, *news@plvoice.org*

### Features & Stories Editor

Evie Maxwell, *features@plvoice.org*

### Arts & Entertainment Editor

Pamela Raine, *arts@plvoice.org*

### Recreation & Sports Editor

Donna Geer, *sports@plvoice.org*

### Photo Editors

Jay Syverson & Steve Deligan, *photoeditor@plvoice.org*

### Ludlow Maintenance Commission & Beach Club Editor

Carol Riley, *criley@plvoice.org*

### South Bay Community Association & Bay Club Editor

Carol Riley, *criley@plvoice.org*

### Village Council Editor

*editor@plvoice.org*

## Business Staff

### Production Manager

Maluhia Shaw, *layout@plvoice.org*

### Classified Advertising Manager

Tim Rensema, *classified@plvoice.org*

### Display Advertising Manager

Cathy Thomas, *display@plvoice.org*

### Distribution Manager

Denny Schuch, *dschuch@plvoice.org*

### Subscription Manager

Sarah Schuch, *subscription@plvoice.org*

### Web Manager

*web@plvoice.org*

### Web Ad Manager

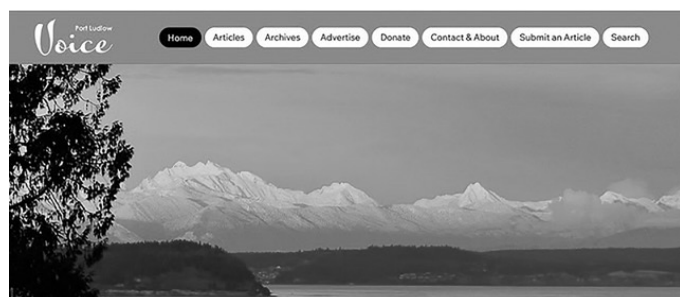
Sarah Schuch, *webad@plvoice.org*

# News & Community

## A New Website, New Opportunities & A Cell Phone Kerfuffle

by Evie Maxwell, Features Editor

At last!



The Port Ludlow Voice has it all!

Well ... maybe not ALL, but darn close when you're a local publication, run by volunteers, in a mostly rural corner of the Pacific Northwest.

The new website is the focus of this, but we will get to the kerfuffle as it's a prime example of some of the possibilities opened by our new Submissions portal.

But back to the basics: In addition to our gorgeous monthly print publication (and a thousand thanks to the outpouring of volunteers who help keep it alive), we now have an up-to-date, modern-day website with the following sections:

**Archives:** The new website features a massive archive of stories from the Port Ludlow Voice. All stories are easily downloadable in .pdf format and viewable in web format, which will work on your phone and your computer.

**Photos:** You will find a vast array of photos on the website. They will be in full color (when available) and many of them just wouldn't fit into our print publication.

**Searches:** The new website also offers a host of search functions which allow you to search by date, keyword, or section. Our sections include News & Community, Features & Stories, Arts & Entertainment, Village News (with separate sections for Bay Club/South Bay, Beach Club/North Bay and Village Council), Recreation & Sports and even Classified Ads. The search function also allows you to search by recurring features, such as "Porch Talk" or "Meet Your Firefighters."

**Submissions & (Finally) the Kerfuffle:** We're especially

excited about our new feature that allows you to submit your own articles. Got news about your club, a recent event, or really anything that you think will interest Port Ludlow readers?

Just click the "Submit an Article" button at the top of any of our web pages and you'll find everything you need to enter an article for publication. The article will go directly to the appropriate editor, and we will let you know if it can be published. Please refrain from submitting political articles and articles with topics such as pornography, violence, etc., as they cannot be accepted.

That said, the potential value of your submissions can be huge. In fact, it is thanks to one reader that we are now investigating a brewing cell phone kerfuffle. According to a submission sent in by KJ Turley, a plot in the midst of Port Ludlow's North Bay region is being eyed for a new 150-foot monopole wireless communication facility (AKA a tower). This land (Parcel 821081015) is situated just north of Swansonville Road and Fleet Drive, and plans filed with the County call for a 50 by 50 foot fenced compound, ground equipment, a new access road, and infrastructure designed to accommodate multiple wireless carriers.

Needless to say, this could raise some eyebrows. We contacted the county and learned that the cell tower applicant has until early next year to respond to a request for more information in order for the process to go forward. In the meantime, anyone interested can learn more, and give comments, by going to the Jefferson County self-service page and using the search function to access ZON2025-00011. This page also offers an email address for anyone wishing to make a comment, all of which will be made public. And, of course, any new information on the project will be publicized via our website's Breaking News section.

**Advertisers:** Last but definitely not least is our "Advertiser section which leads to a host of information including sizes, pricing, reader demographics, and more. Use the scroll bar on the right to view all the information.

Want more? Just come to our website at [plvoice.org](http://plvoice.org). We look forward to seeing you there.



## Tax Time

It is that time of year. However, again this year, for many folks it couldn't be much easier because the American Association of Retired People, known as AARP, and the friendly folks from the Internal Revenue Service, known as the IRS, are sponsoring the "TAX-AIDE" program. The program is a nation-wide free service for low-and-middle-income taxpayers of all ages and is available this year **February 2 – April 14**.

The program is available locally in three different locations. **ALL LOCATIONS REQUIRE APPOINTMENTS!**

One location is at the Port Townsend Community Center with appointments available for **Tuesdays** and **Fridays** from 10 a.m. to 2 p.m. You can make an appointment by calling 360-302-2056.

A second location is at the Quilcene Community Center on **Saturdays** from 10 a.m. to 2 p.m. You can make an appointment in Quilcene by calling 360-302-2340.

The location which may be of most interest to folks in Port Ludlow is at the Tri-Area Community Center in Chimacum. That location is available for appointments on **Mondays** and **Thursdays**, from noon to 4 p.m. You need to schedule your appointment by calling 360-504-8882.

To make appointments online for any of these locations use the URL or QR code below. Or go to: [aarp.org/money/taxes/aarp\\_taxaide/locations/](https://aarp.org/money/taxes/aarp_taxaide/locations/)

When going to your appointment you need to bring the following:

Photo ID (REQUIRED)

Social Security cards for the taxpayer, spouse, and dependents (REQUIRED)

Prior year tax returns – (2023 and 2024 if you have them)

W-2s, 1099s, and all documents necessary to complete the 2025 tax return.

Form 1095-A, Health Insurance Marketplace statement, if you received one.

Bank account and routing ID numbers. A voided check will typically suffice if direct deposit to our account or direct debit from your account is desired.

This program has been extensively used by locals in the past and is expected to be heavily used again this year. As a result, making your appointment as soon as possible is well-advised. This service has been well received by

taxpayers in the past and demand for it continues to grow. Consequently, gather up your documents and make your appointment to get your tax preparation out of the way early this year!

## Protect Important Lands in Jefferson County

Jefferson County welcomes applications to protect important lands through the county's *Conservation Futures Fund* program.

Conservation Futures Funds can be used to protect many types of lands, including lands that protect and/or enhance:

- Wildlife habitat and corridors
- Agriculture
- Cultural resources
- Habitat for salmon
- Watersheds (water quality, water supply and soils)
- Scenic viewsheds
- Forests
- Education and passive recreation opportunities

Jefferson County, the City of Port Townsend, special purpose districts, citizen groups, and citizens of Jefferson County may make application for funds to acquire and protect open space lands. Projects must be represented by an eligible sponsoring organization with the capacity to secure a matching contribution, to enter into an agreement with Jefferson County, and to provide long-term stewardship of properties acquired.

In the 2026 funding cycle, approximately \$254,000 is available to new projects. Of this amount, up to approximately \$38,000 is available to reimburse operations and maintenance expenses for any property acquired with the Conservation Futures Fund. A minimum matching amount of 50% of the total project cost is required of the project sponsor. Sources of match must be non-county funds such as private contributions, state or federal grants, or the value of open space lands linked to the project.

The deadline to submit applications is **Friday, March 20, 2026**. For an application and more information, contact Tami Pokorny at (360) 379-4498 or [tpokorny@co.jefferson.wa.us](mailto:tpokorny@co.jefferson.wa.us).



## Informational and Educational Programs for the Port Ludlow Community

The following programs are open to Port Ludlow Community residents. All programs are at the Bay Club, 120 Spinnaker Place, and will begin at 1p.m. Programs are free of charge.

Informational and Educational presentations are intended to provide a forum for increasing knowledge for members of our community. Just as one needs on-going exercise to strengthen the body, these presentations are intended to help on-going strengthening of the mind. Topics and speakers from a multitude of backgrounds will be offered for our members.

**Thursday, February 12**, David Brownell, Executive Director of the North Olympic History Center, will be the presenter. Mr. Brownell is well known and his presentations are thoughtful, informative and he uses humor well. Mr. Brownell will be discussing “Old Patsey’s Potlatch of July 4, 1891”.

Learn about the final potlatch on Port Townsend Bay that took place at Hadlock and was attended by Tribes from around the Peninsula and Puget Sound, as well as local Port Townsend residents. Old Patsey gave away over \$2,000 of goods to his guests, and the occasion was photographed and recorded in the journal of Judge James Wickersham.

**Wednesday, February 17**, “Eating a Heart Healthy Diet.” Inpatient Dietitian Mary Angelee Brown, RDN, CD from Jefferson Healthcare will provide practical advice on how to create a heart-healthy eating plan that can lower your risk of cardiovascular disease. Angelee Brown is a Registered Dietitian Nutritionist who specializes in medical nutrition therapy and disease prevention.

### First Wednesday Luncheon

*by Stephanie Buehler, Guest Writer*

On **Wednesday, February 4**, at the Bay Club from 11 a.m. – 1 p.m., we will be entertained by members of the West Sound Chorus, who became a favorite last year and who will be singing several tunes to ready us for Valentine’s Day.

West Sound Chorus, a chapter of the Barbershop Harmony Society, formed in 1978 in Western Washington aiming for high-quality performances, hosting popular Christmas and summer shows with quartets, performing for charities, and competing in regional barbershop contests. Most of their music has been arranged or touched in some way by their

talented director of 25 years, Mike Menefee.

Please bring your own lunch. Cookies, coffee, and tea will be provided. RSVP for this luncheon to [firstwednesday-luncheon@gmail.com](mailto:firstwednesday-luncheon@gmail.com) or sign up at the Beach or Bay Club by **February 1**.

Heather Mirczak of Port Townsend Cyclery will be talking to us about recycling and upcycling on **Wednesday, March 4**, tentatively scheduled from 11 a.m. to 2 p.m., at the Beach Club. A variety of homemade soups will be provided and served buffet-style so you may taste several. **RSVP’s must be received by March 1.**

There is no charge to attend our luncheons. However, we ask that you bring a donation in the form of cash, check made payable to the Jefferson County Food Bank Association (JCFBA), and/or non-perishable food such as condiments, coffee, peanut butter, jelly, canned meat, boxed pasta, etc., or hygiene products. Food donations must be unopened, undamaged and unexpired. For February we will also have a Bay Club Donation Jar to help defray the event charges we incur there.

Be sure to mark your calendar for **April 1** (no foolin’). Katie Davis, from Jefferson County Family Court Services, will be our speaker.

## Port Ludlow Tangle Club to Meet February 12

*Meet, connect, and learn from each other!*

The Port Ludlow Tangle Club will meet **Thursday, February 12**, at the Bay Club from 1 – 3 p.m. February’s meeting will be a “Chat and Tangle” meeting. Bring your



own supplies, tangle whatever you want, and have fun with others who share a common interest. Anyone can tangle! It’s easy – repeated strokes, used in structured patterns called tangles, can be meditative and relaxing, helping you slow down, unwind, and take some time out of a busy day to refresh your mind, spirit, and creative reservoir. Combining tangles in various ways leads to more and more inspiration! For

first-timers, beginner kits will be available for a nominal fee. To RSVP, please contact Certified Zentangle Teacher Alice Clive at [foureyes22@outlook.com](mailto:foureyes22@outlook.com).



## Martha's Book Group - *The Dictionary of Lost Words*

*The Dictionary of Lost Words*, Pip Williams' 2020 debut historical novel from Australia, is the Martha's Book Group selection for February. Join us on **Tuesday, February 10**, at 4 p.m. at the Bay Club to discuss lexicographers, the Scriptorium, and the power of words in shaping history before electronic media and AI altered personal responsibility for what one would write.

This book is one of many contemporary novels available to book groups through book club kits. These kits, containing ten copies of the book, may be borrowed from the Jefferson County Library for up to two months. MBG uses these kits as part of the selection process in deciding which books to discuss.

MBG meets monthly on the second Tuesday of each month at 4 p.m. at the Bay Club. For further information, or to find out how to get a copy of the current book, contact Sarah Schuch through [bookclub@plvoice.org](mailto:bookclub@plvoice.org).

## Senate Resolution Honors Chimacum High School Band

The Chimacum High School band will be formally recognized on the Washington State Senate floor in Olympia on **February 10**, with a resolution read at the start of the legislative session. Students, families, and school representatives will be seated in the Senate Gallery.

This recognition is a huge milestone for these students and another meaningful moment as they prepare to represent Washington in the national America 250 celebration this July.

## Estate Planning with Your Pets in Mind

Have you considered what happens to your pets when you are gone? What about care for your pets when you have an unexpected hospital stay?

Northwest Estate Planning & Probate will present a free seminar about options for providing legal protections for your pets during life and after death.

Join us at the Beach Club, 121 Marina View Dr., Port Ludlow, WA, on **Wednesday, February 18**, 1 – 2 p.m.

## Jefferson County Library District's February Events

Happy February from Jefferson County Library District (JCLD)! Whether you enjoy classic romance novels, thrilling mysteries that keep you on the edge of your seat, or heartwarming stories to cozy up with on a chilly evening, the Library District's shelves are filled with options to satisfy every reader. There are also a variety of engaging programs taking place in February, so be sure to visit the calendar at [jclibrary.info](http://jclibrary.info) for a complete list.

Don't miss our new program series for kids ages 4–8, beginning **Tuesday, February 3**. Bring your friends and enjoy a delightful afternoon of art and crafts. No sign-up is needed, just drop in and join the fun! Kids Creative Space meets on the 1st and 3rd Tuesday of each month from 3:30 p.m. – 4:30 p.m.

Do you know a teen who could use help managing stress? Invite them to join The Benji Project's 8-week Mindful Self-Compassion for Teens series. Classes meet on **Wednesdays** from 2:45 p.m. to 4:45 p.m., **February 4** through **April 1** (no class on **February 18**). This program is for ages 11–14 and helps teens handle life's ups and downs through art, games, and reflection. For tuition and registration details, visit [thebenjiproject.org/after-school](http://thebenjiproject.org/after-school).

On **Thursday, February 5**, from 4 – 5 p.m., chat *live, online* with author Vanessa Riley. Vanessa will share her new novel, *Fire Sword and Sea*. Set in the Caribbean in 1675, the story follows Jacquotte Delahaye, the mixed-race daughter of a tavern owner on Tortuga who dreams of life at sea. Disguised as a man, she sails as a pirate for years – until her crew turns to the slave trade, forcing her to choose a new path. Don't miss your chance to learn more about this swashbuckling, high-seas adventure! Please visit the program calendar at [jclibrary.info](http://jclibrary.info) to sign up for the talk.

Dr. Lindsay Stewart explores 400 years of Black women's magic and traditions in her new book, *The Conjuring of America*. Dr. Stewart, an award-winning author and Professor of Philosophy, reveals how Black women used knowledge, creativity, and resilience to preserve culture, inspire hope, and push for freedom. This *live online* program takes place on **Thursday, February 12**, from 11 a.m. – noon. Visit the program calendar at [jclibrary.info](http://jclibrary.info) to sign up.

Don't miss our monthly presentation on Disaster and Emergency Preparedness hosted by Jefferson County's

*continued on page 25*



## The Benji Project

The Benji Project has the vision of helping young people thrive navigating life's ups and downs with resilience. We teach proven mindfulness and self-compassion tools to young people and their families and communities. Through classes, workshops and camps, we build capacity for stress management and emotional resilience. We have two upcoming ways to be involved for youth and adults.

### Mindful Self-Compassion After School Program

The Benji Project is offering a winter-after-school *Mindful Self Compassion Program* at the Jefferson County Library for 11–14-year-olds. The program will take place on **Wednesday** afternoons for 8 weeks starting **February 4** and ending on **April 1**, with a break on **February 18**. Discover mindful self-compassion through art, games, and reflection. Explore ways to navigate the ups and downs of life through fun activities in a supportive community. Jefferson County Library is located at 620 Cedar Ave, Port Hadlock, WA.

For registration information: [thebenjiproject.org/after-school](http://thebenjiproject.org/after-school).



### Festival of Hearts

Please join The Benji Project community for this annual fundraiser on **Saturday, February 7**, from 2 – 5 p.m. at Northwest Maritime Center at 431 Water Street, Port Townsend. Support our vision of young people thriving while navigating life's ups and downs with resilience.

This year's *Festival of Hearts* offers a very special afternoon centered around the sense of sound. Explore the mindfulness practice of listening to natural sounds, with the inspiration of Northwest birdsong. Experience a

bird-inspired musical offering, with special guests from the Port Townsend Symphony Orchestra. For this festival, we are thrilled to partner again with Chef Arran Stark to serve an elegant tasting plate, along with craft beverages from local purveyors. To learn more visit us at [thebenjiproject.org/hearts](http://thebenjiproject.org/hearts).



## Meet Your Firefighters

by Emily Stewart, EJFR

Jane Stebbins is a new Admin volunteer with East Jefferson Fire Rescue (EJFR). She hails from Colorado, where she volunteered for 14 years as a Firefighter II, EMT, and engineer; co-founded a five-county High Country Critical Incident Stress Management team; and led the department's Fourth of July activities. A retired newspaper



reporter now working on a novel, she might pursue medic and tender operations with EJFR in the future.

Jane lives in Port Townsend with four cats and a flock of chickens, enjoys hiking, kayaking, travel, reading, and plays fiddle, among numerous other hobbies.

## Dine and Discover

The European green crab (EGC), considered to be one of the most damaging invasive species, has been spreading along the coastlines of Washington State. When able to establish a large population in an area for a long period of time, they can have devastating effects on some native species. On Monday, March 2, Hillary Sanders from the Marine Science Center will discuss the Molt Search project. You'll learn where EGC is being found, why it matters, and what you can do about it. She will also update us on the Marine Mammal Stranding Network. This presentation, which will be held at the Bay Club, is one you do not want to miss.



Sign-up sheets will be available at the front desk at both the Beach and the Bay Club by Monday, February 9. This event is open to North and South Bay members and their guests. Doors open at 5:30 p.m. Please remember that if you're bringing an appetizer, bring one that can be easily served by our volunteers. Whatever you bring, please make it large enough to serve 8-10 people. Some of us have dietary issues, so please put a note on your dish if it contains any of the following allergens: wheat, soy, eggs, milk, tree nuts, peanuts, fish, or shellfish. You will also need to bring your place setting (plates, napkins, eating utensils, glasses), placemats if desired, and a plastic bag to put your dirty dishes in to take home. We provide coffee/tea/water but if you would prefer something else to drink, you're welcome to bring your beverage of choice. Admission is \$5 per person, payable at the door. This covers the cost of the facility, coffee/tea, banquet permit, and the

honorarium we provide the speaker. If you sign up but are unable to attend, please let us know as no-shows can significantly affect the food selection.

For questions or suggestions, call us at 360-437-8091. We look forward to seeing you there. We encourage everyone to bring a friend who has yet to experience Dine and Discover.

## A Proud Moment for Chimacum: Chimacum School Board Receives State's Highest Honor

The Chimacum School District is celebrating a major honor: the 2025 Washington State School Directors' Association (WSSDA) State Board of the Year for small districts. This award recognizes school boards that demonstrate exceptional leadership, strong alignment to student-centered goals, and significant progress in improving educational equity and outcomes for all learners.

Chimacum's Board was selected this year for its clear vision and its steadfast commitment to the district's Purpose—to be a caring community for courageous learners—and its Promise that every student is known by name, strength, and need. These guiding principles anchor the district's strategic plan and shape every decision the Board makes.

Board Chair Dr. Roxanne Hudson emphasized that the recognition reflects the efforts of the entire Chimacum community—teachers, staff, students, families, and partners who work together each day to create a welcoming and effective learning environment. The Board's leadership has contributed to improvements in kindergarten readiness, reduced discipline rates, and expanded inclusion for students with disabilities. These are clear signs of a district moving forward with purpose and collaboration.

Superintendent Dr. Scott Mauk noted that small rural districts face ongoing challenges, from tight budgets to staffing shortages, yet Chimacum continues to make measurable progress by staying focused on what matters most: student success, engagement, and well-being.

This statewide recognition is a celebration of teamwork, community spirit, and the shared belief that when people come together on behalf of children, extraordinary things can happen.





## Second Annual CSD *Read-a-Thon* to Benefit Outdoor Education

Have you ever lost yourself in a good book? Have you found yourself? Have books taken you places in your imagination, given you new perspectives, and opened your mind to new dreams? With Chimacum Schools' 2nd Annual *Read-a-Thon* fundraiser for outdoor education, we hope to support horizon-broadening adventure for students, both figuratively and literally!

To encourage a love of reading in our students and support them in building literacy skills, the Chimacum Community PTA is gearing up for the *Read-a-Thon*, taking place between **February 13** and **27**. Funds raised by young readers make possible field trips, outdoor education opportunities, and special school events.

During the *Read-a-Thon*, students will be seeking sponsors as they log the number of minutes read, challenging themselves to meet daily personal and classroom goals. The event will feature a kick-off assembly, book giveaways, and the "Read and Feed," a special family lunch prepared by the students at Chimacum Elementary School (CES) with food grown in the school garden, organized and led by garden teacher Valerie Randall. Prizes will be awarded to individuals and classes based on the number of minutes read as well as funds raised. Anyone can sponsor a student by making a flat donation to their individual dashboard or sponsor all students by making a general donation to support the overall event.

Last year's *Read-a-Thon* raised over \$21,000 to invest directly into programs and experiences that would otherwise have been out of reach. Over the past year these funds have been used to support things like: field trips to local farms such as the Dharma Ridge pumpkin patch; scholarships to the beloved 6th grade CISPUS sleep away camp in Randall, WA; and the purchase of rain suits for our pre-K and transitional Kindergarten classrooms, enabling even our youngest learners to play outside, rain or shine. Special school events like Field Day, Family BBQs, and the Spelling Bee were also made possible.

If you have friends or relatives with students, reach out and ask for the link to their dashboard where you can donate and leave words of encouragement. If you love reading, believe in outdoor education, or would simply like to support students in reaching their goals, please consider donating to the *Read-a-Thon* directly at this link:

[wspta-12500563.givebacks.com](https://wspta-12500563.givebacks.com).

If you prefer to use cash or check, drop it off or mail

it to Chimacum Elementary School, c/o Chimacum Community PTA, 91 W. Valley Rd., Chimacum, WA 98325. Be sure to write ***Read-a-Thon*** on the memo line. Thank you for your support!

## We Can Do This, Port Ludlow

*Rethink, Reduce, Reuse, Repair, Repurpose, RECYCLE*

A new recycling information flyer for unincorporated Jefferson County is being designed, and Port Ludlow residents should receive this information in the February PUD bill. The items to be recycled should see little change. Methods for recycling, however, will change.

As of **April 1**, residents will no longer need to bundle and transport residential recycling to the drop boxes. Waste Connections/Olympic Disposal will provide curbside recycling service going forward. Beginning in **March**, residents desiring curbside recycling should call Waste Connections (360-452-7278) or see the webpage at [wasteconnections.com/sequim](https://wasteconnections.com/sequim) to arrange for the delivery of a recycling bin. These will be similar to your current garbage rolling bin and will be placed curbside every other week next to your garbage bin.

The advantage here is that recycling materials will not need to be separated any longer. All recycling items, including cardboard, paper, plastic (only plastic bottles and jugs), and metal cans will go in the same container. Containers will be picked up every TWO weeks for a cost of \$12.30 monthly. Thus, a fee of \$24.60 will appear on your billing statement every two months.

Glass needs to be recycled separately. Drop boxes will be available at both the Port Townsend and Quilcene transfer stations for the regular garbage fee of \$20 for up to 220 pounds.

Homeowners are not required to recycle. Continuing with your current garbage service without adding recycling is permissible. However, approximately 30% of most homeowner's refuse is recyclable and could be repurposed. Trucking Jefferson County garbage 360 miles to southeastern WA is expensive, so every bit you can recycle makes a difference in the bottom line for Jefferson County.

Additional recycling information as it is forthcoming will be available at [jeffersoncountysolidwaste.com](https://jeffersoncountysolidwaste.com). This website is packed with information related to disposal of household and business waste and is the go-to for the latest updates during this transition to curbside recycling.

We can do this, Port Ludlow!

# Features & Stories

## Valentine's Day

*by Milt Lum, Staff Writer*

Sabrina recognized the Sharks logo on the cap worn by an Asian woman dressed in a tan sleeveless top, beige pants, and sandals, sitting alone at a table in the Jewish deli. Mrs. Luke, a friend of Sabrina's former boss, was visiting family in San Jose and called Sabrina to invite her to have lunch. Mrs. Luke said she was still a big Sharks fan. Over lunch, Mrs. Luke explained that she was assigned to discuss a vacancy at her software company in Seattle. It was a special request from her director, Mr. Singh. Sabrina gasped.

Mrs. Luke smiled. "It appears you made quite an impression on him."

"Has it been five years since he left?" For Sabrina, it seemed more like ten. Her new boss was younger and part of a new group of employees who were bright and brash. He assigned her the most difficult assignments and credited himself with the results. Others, less deserving and part of the 'bro' culture, were advanced to higher positions, and she was left behind. She endured because she was too insecure to seek other options.

Mr. Singh was a taskmaster, but fair and kind. His support sustained her during the dark days following her parents' sudden demise when they were unable to escape the wildfire that engulfed their hillside dream house. She was bereft when he left the company, and she had not heard from him until Mrs. Luke brought up his name.

She was flattered but panicked at the thought of traveling out-of-state alone. Her mother had always been there for her with every major move from high school to the nearby state college and then to grad school. A late bloomer, socially withdrawn and an introvert, she was grounded in her parents' twentieth-century values of patience, persistence and prudence. Routine and familiarity gave her the security she needed as she grieved her loss.

Mrs. Luke listened patiently as Sabrina gave her all the reasons she could not leave her present position. "You don't need to decide right this instant. I'll be here for a few more days." It took several meetings to allay Sabrina's concerns. She gave her two-week mandatory notice and left California after the moving company packed up her belongings. Mrs. Luke convinced her that traveling by rail would be less hectic and more scenic. It was early evening when she arrived at the King Street railroad depot and found Mrs. Luke waiting for her.

"It's a pleasant evening," said Mrs. Luke. "Let's walk so you can unwind from that long train ride, and I can show you the sights."

Having someone familiar at her side, Sabrina relaxed and absorbed the sights and sounds of Seattle. She heard the roar of the home crowd cheering on their team as they passed T-Mobile Park on their way to the waterfront. The sidewalks were packed with tourists as they walked along Alaska Way and up the hill to First Avenue. At the entrance to an apartment building fronting First Avenue, Mrs. Luke used the key fob to access the lobby and handed it to her as they waited for the elevator.

They rode to the twenty-third floor, then walked the length of the hallway to the north end of the building. They stopped at apartment 2315, and Mrs. Luke handed her the key card. Sabrina opened the door and walked into a newly refurbished, one-bedroom unit. Through the sliding glass doors which opened to a small balcony she beheld a panoramic view of Puget Sound, Bainbridge Island, and the Olympic Range. Stunned, she turned to Mrs. Luke. "For me?"

Mr. Singh recognized that Sabrina's math prowess, persistence and penchant for solving puzzles were exactly the skills his department needed. They were tasked with detecting any weaknesses that hackers could exploit in their new software programs. Within weeks of starting, Sabrina had exceeded his expectations, putting in long hours and meeting crucial deadlines. He finally put some limitations to the hours she spent on the office computer and insisted that she implement an exercise program as part of her work schedule.

Sabrina took advantage of the long hours of daylight to walk to and from work. Her routines made her a familiar figure to the baristas at the coffee kiosk, the owners of the green grocers, and the clerks at the bakery she stopped at on her way to and from work. Those encounters, as well as the supportive atmosphere among her co-workers, were a salve on the open wounds of loneliness which had festered since her parents' death. As the sunny days gave way to the grey gloom of fall, Sabrina felt her spirits sagging. She was delighted when Mrs. Luke invited her to spend Thanksgiving weekend with her family on Bainbridge Island. Though she had passed the ferry terminal on numerous occasions, it never occurred to her to visit Bainbridge Island. She looked forward to the new adventure, knowing Mrs. Luke would be there to greet her.

Sabrina disembarked the ferry feeling a little anxious about



spending time with strangers. The Lukes welcomed her with warmth and distance, allowing her time to adjust to them. The Luke girls, twelve and fifteen, were competitive video game enthusiasts which helped ease the social awkwardness among them. The girls were eager to entertain Sabrina, providing her with the teen experiences she missed because she was an only child. They were making plans to have Sabrina join for them for Christmas before their mother reminded them that they would be spending Christmas with their grandmother in Hawaii.

Sabrina hugged each member of her newly adopted family before heading down the passenger ramp. She held on to Mrs. Luke a tad longer than the others, with a little extra squeeze as they parted.

Entering the passenger deck cabin, Sabrina eyed an unfinished puzzle on a table top. She loved working on puzzles with her father. When he died, she stopped. On this night her interest was rekindled. She was so absorbed in finishing it that she was not aware that the ferry had arrived in Seattle until the steward came by to usher her off. Throughout the week she was tempted to take the evening ferry just to finish the puzzle. The idea of not finishing the puzzle bothered her. And so it began that each weekend Sabrina was the first in line to board the 7:20 a.m. Bainbridge Island ferry and settle in at a puzzle table, determined to have completed it by the end of her round trip.

On board Sabrina isolated herself from the din and automatically worked the puzzle pieces into place. But her mind went back in time to her father. Memories locked away in rooms too painful to enter were gradually unlocked. She savored each weekend trip as an opportunity to enter one more room, each visit less painful and more cherished.

Upon disembarking from the ferry on February 14, she went to her favorite flower seller at Pike Street Market and purchased a single rose bud. She took it home and placed it in a vase in memory of her father. At her Sweet Sixteen birthday party twenty years ago, he presented her with a single rose bud and a card addressed to *His Best Puzzle Buddy*.

**plvoice.org**

Breaking News – Archive of Past Issues  
Early Access to News Articles  
Local Arts – Letters to the Editor

## Porch Talk with Mike Wilson

by Donna Geer, Staff Writer



Mike Wilson.

Submitted photo

He has that rare ability to remember calendar dates as if they happened yesterday, like the first time he met his wife, and the day she became his girlfriend. He remembers when an investment company called him on his mother's birthday and offered him the job on his wife's birthday two days later. It certainly got his attention. Is he a numbers guy? He might be. Or maybe he's just more mindful of coincidences.

Mike Wilson was born in Georgia and raised in Alabama. His mother ran a daycare out of the family home, and his father was a preacher and a farmer until he retired. The family moved to Maryland when Mike was seven years old. He says his family didn't have a lot, but they had enough and that's really all that mattered. Never the rebellious sort, he followed most of the family rules. He was always mindful of his father, though he says he got in trouble once when he rode his dirt bike into Devil's Canyon and jumped off wooden ramps he and his friend Doug had built. He wasn't supposed to be there.

After high school, he started college in 1990, but his heart wasn't in it, so he worked for Radio Shack and then Circuit City before enlisting in the Marines months later. He was in the military for a total of fourteen years across two separate enlistments. The first time he enlisted, he was in infantry. From 1990 – 1994, he was stationed in places like Somalia, Bosnia, Haiti, Cuba, and Okinawa. It was one of his units that pulled U.S. military forces out of Somalia in 1994, six months after a failed mission in 1993 to capture a warlord resulted in the deaths of many U. S. soldiers and Somalian civilians.

Mike reenlisted in the Marines in January 2001. He was deployed to both Afghanistan and Iraq a total of seven times before becoming a Chief Instructor. He taught

courses in finance, showing service members how to maximize their assets. He also taught more traditional classes, like the two-week training course for non-infantry military in Camp Lejeune, NC, that included an endurance course in murky swamp water. Their Operations Center was a building outfitted by the Navy Seabees for their own certifications, something Mike orchestrated with \$10K and a lot of goodwill. That course covered convoy operations, navigation, and how to shoot a machine gun. In 2008, he created a video course that mirrored the same concepts. The Marines still use it today. It covers procedures for clearing a room, convoy operations, and communications.

Mike left the military in 2010 and started working for Home Depot in California as a Loss Prevention Manager. He'd followed a girl to the west coast, but realized it wasn't meant to be, so he put in his two-week notice in 2011 so he could go home to Alabama. And then fate stepped in. He was just doing his job, he said. He needed a witness for a female shoplifter, so he asked Amanda Rodriguez, an employee from the flooring desk, to be a witness during the questioning of the shoplifter. He and Amanda hardly spoke during the whole ordeal, but there was just something about her that he couldn't shake. He pulled his resignation letter the next day.

Mike says they got to know each other through "goofy" conversations. Then it was a lunch date on September 1, 2011. And then another. They married on 12/12/12 and have a ten-year-old daughter named Joscelynn. He says it's the best thing that's ever happened to him. Amanda is his partner in everything, but being a "girl dad" is what really changed him. He was a Marine during very violent times, but now he's a Disney dad with a golden retriever. He's even seen both of the *Wicked* films. His family means everything to him.

If you've frequented The Beach Club lately, you might have met him. He's the new General Manager of the Ludlow Maintenance Commission (LMC). He has a degree in Business Management and Marketing, and certifications in Certified Manager of Community Associations (CMCA) and Association Management Specialist (AMS). He's currently working on his Professional Community Association Manager (PCAM) certification. He's an easy-going guy, interested in new ideas for the community, hoping to establish stronger bonds between the North and South Bay clubs.

He really likes Port Ludlow because there's so much to do. Every single day, he sees beautiful views of the water and the trees. Deer frequently wander through his yard, and the school bus drops his daughter off in front of their house. It's where he wants to retire. In this quiet peaceful town,

people look out for each other. That's why he lives in the community he manages.

When I asked him what he wished he could do over, Mike Wilson couldn't come up with one single thing. *It's because of the butterfly effect*, he said. In chaos theory, that's where one small modification can ripple through time and cause something unpredictable in the future. If he changed anything, maybe he wouldn't have become a Marine. Maybe he wouldn't have met the love of his life or had his daughter. Maybe he wouldn't have ended up in Port Ludlow. Maybe, maybe... No, he wouldn't change a single thing.

You can find these and other stories online at [plvoice.org](http://plvoice.org). As you already know, our little town is an eclectic mix of wonderful and interesting people. Some were born here and many more come from elsewhere, but all of us have chosen to make Port Ludlow our home. Every one of us has a great story, so let's sit on the porch and have a conversation. We can share a cup of coffee, or tea, if preferred. You can reach me at [sports@plvoice.org](mailto:sports@plvoice.org). Looking forward to hearing from you!

## Pintos in the Salish Sea

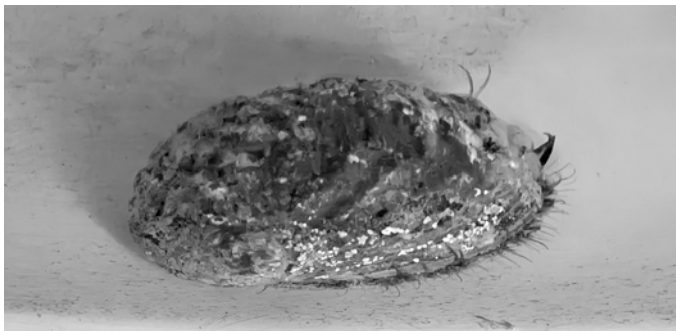
by Gail Wellenstein, Kitsap Beach Naturalist

A six-inch-long marine snail glides along on its muscular foot through the kelp bed, protected by a multicolored, irregularly lumpy oval shell with six raised pores on one side. Two head tentacles protrude from under the front edge of the shell, sensing food and predators, and a ruffle of small tentacles nestles under the rest of the shell, enabling the pinto abalone to pick up chemical clues to its environment as well as the direction of water flow. The pinto abalone is seeking its favorite foods, red seaweed and kelp. It is the only abalone that lives along the cold rocky shoreline of the Pacific Northwest.

The inside of the shell is pearlescent, a stark contrast to the outside, and the flesh is tasty, a bad combo if you want to survive in relatively shallow water along shorelines populated by people, sea otters, sea stars, and the giant pacific octopus. For centuries, there was a sustainable harvest by the indigenous peoples of the Pacific northwest. The pearlescent shell was highly prized as a sacred object, and was used in trade, ceremonies, decorative inlay, and jewelry. Life for the pinto changed drastically when they were classified as a shellfish for the purpose of recreational fishing. Goodbye sustainable harvest.

Washington state never had a commercial abalone fishery,





*Pinto Abalone at the Port Townsend Marine Science Center*  
Photo by Gail Wellenstein

but it did open a recreational harvest in 1959. By the mid 1980's, recreational divers were harvesting up to 40,000 per year, with additional numbers taken by poachers. The abalone population crashed as a result and the state began a survey in 1992, which led to a closure of recreational fishing in 1994. Sadly, the population continued to decline after the closure. Sea otters, octopus, and sea stars were still dining on them, but this alone could not account for the severity of the continued decline. By 2012, surveys found only 12 wild pinto abalone in our state. Why did the population not recover?

Pinto abalone are slow-growing with a lifespan of at least 15-20 years, so one would think that with time more juveniles would show up. They reproduce by broadcast spawning, meaning that they release thousands of eggs or sperm directly into the water, like coral. Then an egg and sperm bump into each other in the water and voila, fertilization, and eventually new abalone. However, this method requires that there is a member of the opposite sex nearby, ready and able to release its reproductive cells. If too few abalone are left in the area, their eggs and sperm may just drift in the water without meeting their mates. This is exactly what happened. By the time the harvest was closed, there were too few abalone left and they were too far apart. They are now what wildlife scientists call "functionally extinct" in our area, meaning that though there are survivors, they cannot maintain their population by reproduction. Can they be saved?

Recovery efforts began in 2002 with a joint effort by UW and Washington Fish and Wildlife. Many organizations joined in the effort over time, including private, non-profit, tribal and academic partners. They developed a captive breeding program, and by 2009 they were able to plant marked juveniles in rocky reef habitats in the Salish Sea. These juveniles are the size of a dime and are marked with colored tags to show that they are hatchery abalone. Over 78,000 pinto abalone have been planted in Washington waters and surveys show a slow recovery of the population. One additional protection for abalone was added in

2019 when they were listed as an endangered species in Washington State. The goal of recovery efforts is to return the pinto abalone to a self-sustaining population level. For more information checkout the Puget Sound Restoration Fund at [restorationfund.org/programs/pintoabalone/](http://restorationfund.org/programs/pintoabalone/).

## No extrinsic goals

*by Suyin Karlsen, Guest Writer*

He gave love away like it was nothing.  
Every day, in every way, he said,  
"I love you," to anyone.  
In not those actual words.  
In case he was mistaken for a flirt,  
a romantic,  
too happy, too crazy.  
So, he tricked the world with:  
Kindness  
Boiled eggs  
Coffee at Richard's  
Ride on his motorbike  
Pensioner's jokes he'd told before.  
This *dharma* I got from him:  
Kindness  
Small notes  
Something I cooked  
Loving in spite of  
*Seva* in Ceylon and India  
Larger than life he was.  
You would think he was rich.  
Look now...  
Our father in heaven  
playing cards with money lenders  
he still owes.

## Port Townsend Chamber Music Series Benefits Chimacum High School Cowboy Marching Band

The Port Townsend Chamber Music Series is performing a benefit concert for the Chimacum High School Cowboy Marching Band on **Saturday, February 7**, at 2 pm at the Beach Club, located at 121 Marina View Drive, Port Ludlow. The band was selected to represent Washington State at the nation's Independence Day parade in Washington, D.C. on July 4, 2026.



The concert will feature works by Brahms, Beethoven, Berg, Herringman, Hure, Choo, Martini, and Massenet. Featured artists include Michael Carroll, Sung-Ling Hsu, and Lisa Lanza on piano, Marina Rosenquist on violin, Barbara McColgan Pastore on harp, and Guy Smith on lute. Howard Gilbert and George Shaffer are on percussion, Anne Burns on viola, and Pamela Roberts on cello. No tickets or reservations are required. There will be a short reception after the concert.

Robert Nathan, president of the Port Townsend Symphony Orchestra board stated, "Our symphony orchestra's chamber series team is excited to kick off this fundraising effort to support the Chimacum High School band. We're proud they were chosen to represent Washington State for this

important 250<sup>th</sup> national birthday celebration. This trip will be a wonderful music and teamwork experience for them."

The band's Booster Club must raise approximately \$100,000 to cover the band's travel expenses. Donations will be gratefully accepted at the concert. If you would like to donate by check, please make checks payable to CHIME IN and mail your check to P.O. Box 631, Chimacum, WA 98325. For more information, please visit [zeffy.com/en-US/donation-form/chime-in-with-the-band](http://zeffy.com/en-US/donation-form/chime-in-with-the-band).

For more information on the Port Townsend Chamber Music Series, please visit [ptsymphony.org/chamber-music-series](http://ptsymphony.org/chamber-music-series).

**Edward Jones**

Member SIPC

**Is your broker ignoring you?  
Call to schedule a one-on-one.**



**Rick Smith, CFP®, AAMS®**  
Financial Advisor

9526 Oak Bay Rd Suite 300, Po Box 65138  
Port Ludlow, WA 98365  
360-437-5113

EJB-19325-A-E-DA-3 AECSPAD

[edwardjones.com](http://edwardjones.com)

**FEBRUARY 14<sup>TH</sup> 12 - 1:30 PM**  
**A VERY VICTORIAN**  
**VALENTINE TEA**



We invite you and your special someone to disconnect from the modern world and indulge in an afternoon of historic elegance. Together, enjoy the delicate notes of our signature Starrett House Tea, perfectly paired with a selection of handcrafted treats.



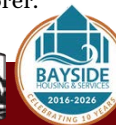
**FEBRUARY 14<sup>TH</sup> 4 - 8 PM**  
**THYME FOR ROMANCE AT**  
**SPIRITS BAR & GRILL**



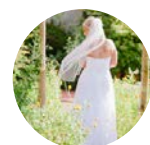
Prix Fixe Dinner Menu  
Full Menu Available On Our Website  
\$75.00 per person  
includes glass of champagne

Special performance by Johnny Z with  
Susan LaMaster and Rachael Contorer.  
5-7 pm

**Spirits**  
BAR & GRILL at the



**FEBRUARY 21<sup>ST</sup> 11 - 5 PM**  
**OAP**  
**JEFF CO WEDDING EXPO**



Discover why Jefferson County is a premier destination for weddings and special events. Join us on February 21, 2026, at the Old Alcohol Plant Inn in Port Hadlock for an unforgettable showcase of local talent, unique venues, and world-class services.



Pacific Northwest Luxury  
Tailored & Timeless



 **Architectural Design & General Contractor**  
Building Locally Since 1992  
360-437-8148  
marie@newleafwa.com  
www.newleafwa.com

**New Season Move Management**  
Senior Moving Specialists

Need Help Moving?  
Down-sizing?  
De-cluttering?

- Estate Sales and Clear-Outs
- De-clutter, Stage Home for Market, RightSize
- Organize, Pack and Unpack So You Can Relax
- Custom fit plans for your needs & budget

Free in-home consultation!  
**(360) 774-1255**  
www.NewSeasonMove.com

Licensed, bonded & insured

 **NASMM**  
National Association of Senior Move Managers  
Premier Providers of Senior Relocation

Serving Jefferson County and Surrounding Area

 **Westharbor Homes**



**WESTHARBOR HOMES** brings expertise and creativity to every project, from full custom homes to thoughtful remodels. We pair craftsmanship with clear communication and a streamlined process, so your vision comes to life with less stress and more confidence. Whether you're refreshing a single space or building from the ground up, our team is committed to quality, integrity, and making the experience as smooth as possible.

[www.westharborhomes.com](http://www.westharborhomes.com)

**2026 MONTHLY WINE TASTINGS**

*The Fireside*



**\$10\***  
/person

Second Tuesday of each month, 4pm-7pm

MARROWSTONE VINEYARDS casa bruno Hoot Vinyards  
MICHAEL CORSO Ambassador Dossier

[www.portludlowresort.com/wine-events](http://www.portludlowresort.com/wine-events)



"Let our advertisers know you saw them in **The Voice!**"



# Home Comfort

ALLIANCE  
Formerly Sullivan Heating & Cooling

Heating | Cooling | Ductless  
Installation & Repair  
Residential / Commercial / New Construction



Serving the Peninsula with award winning customer service since 1994!

**360-200-6207**  
[homecomfortalliance.com](http://homecomfortalliance.com)

Ask us about tax credits on Energy Star Heat Pumps!

## chimacum corner farmstand

visit us! **YUM!**  
**FOOD FROM HERE** open daily 8 to 7  
9122 Rhody Drive, Chimacum, WA  
360-732-0107, [chimacumcorner.com](http://chimacumcorner.com)

## LOCAL BREAD

White Lotus **DELISH!**  
Pane d' Amore  
Chimacum Grainery





# Liberty Shores

SENIOR LIVING  
RETIREMENT • ASSISTED LIVING • MEMORY CARE

LOCALLY OWNED AND MANAGED

**360.779.5533**

19360 Viking Ave NW | Poulsbo WA, 98370  
[www.LibertyShores.com](http://www.LibertyShores.com)

## FIELD ARTS & EVENTS HALL

PORT ANGELES' PREMIER WATERFRONT EVENTS VENUE



Field Hall showcases the most stunning views of the Strait of Juan de Fuca and Olympic Mountains inside a luxury modern venue. Onsite amenities include a finishing kitchen adjacent to the banquet space, dressing room suites for bridal parties and groomsmen, and presentational theater. Our flexible setups can accommodate 20 - 300 guests.



*Request your free event quote*

EMAIL: [GEORGIA@FIELDHALLEVENTS.ORG](mailto:GEORGIA@FIELDHALLEVENTS.ORG) • CALL: (360) 504-2415  
SPECIAL RATES AVAILABLE FOR MID-WEEK OFF-SEASON CELEBRATIONS



# Arts & Entertainment

## A New Season for Ludlow Village Players

by Kate Marshall, Artistic Director, Ludlow Village Players

As the saying goes, “out with the old and in with the new.” Our annual scholarship fundraiser wrapped up in November, and we’ve cast our next show, *Pets (and Their Humans)* performing April 17 – 26, at the Bay Club in Port Ludlow.



You may recognize some of the names in our cast. Port Ludlow’s favorite physical therapist, Michael Haberpointner, will be starring in our Spring show along with his daughter, Anja Haberpointner. Anja won’t be the only kid gracing our stage for this show. Alena Flynn-Freeman and her friend Bella Rose Dillon have been cast as well. All three of these talented girls are under the age of 13, and we’re thrilled they will be joining us for *Pets*. We’re also excited to welcome newcomer Caroline Miner to star opposite Michael. The cast is rounded out by Ludlow Village Players regulars, superstar Starley Flynn and our favorite grumpy old man, Jeff Groves.

The cool thing about community theater is that we welcome everyone to experience the magic of producing

a show. The 2024/25 season saw many first-time actors, stage managers, set designers and builders, prop helpers, and costume designers. All of these volunteers are members of our community with a wide variety of backgrounds and many have no previous theater experience. If you’re interested in discovering your creativity and trying something new, please email Kate Marshall, our artistic director, at [director@ludlowvillageplayers.org](mailto:director@ludlowvillageplayers.org). Currently, we need artists to design and paint set pieces, acquire props, and help with costumes.

The Ludlow Village Players board hopes everyone’s year has started well, and we look forward to seeing you. To purchase tickets for the *Pets (and Their Humans)* show, please visit [ludlowvillageplayers.org](http://ludlowvillageplayers.org).

## Port Townsend Symphony Orchestra February Concert

Under the direction of Maestro Tigran Arakelyan, the Port Townsend Symphony Orchestra opens its 2026 concert season with a free concert on **Sunday, February 22**, at 2 p.m. at Chimacum High School Auditorium. There will also be an open dress rehearsal on **Friday, February 20**, at 7 p.m. The Chimacum High School Auditorium is located at 91 West Valley Road, Chimacum, WA.

This concert features Young Artist Competition (YAC) winner and Chimacum High School senior, Steven Woolbright, playing *Asventuras*; a work for solo snare drum by German percussionist/composer Alexej Gerassimez. The work demonstrates the different sounds that a snare drum is capable of making by applying complex rhythms, technical mastery, and various sticking implements and surfaces in lieu of traditional devices used with other instruments.

Guest narrator, Stanford Thompson, will read selected Abraham Lincoln speeches from Aaron Copeland’s *Lincoln Portrait*, one of three works commissioned to boost morale during World War II. Mr. Thompson is a graduate of Curtis Institute



and New England Conservatory. He is a leading voice in arts education and leadership and currently teaches at the Global Leaders Institute. The music is a combination of Copeland's own music and music inspired by folk songs such as *Springfield Mountain*, and *Camptown Races* that was played at Lincoln's campaign rallies.

Rounding out the program is Antonin Dvořák's *Symphony No. 6*. This symphony is a treasure that is full of warmth, rhythmic vitality, and a distinctly Czech spirit. Commissioned but not performed by Hans Richter of the Vienna Philharmonic Orchestra, it was premiered by the Czech National Orchestra. This is the first symphony where Dvořák fully embraces Czech folk rhythms and colors within a classical symphonic structure and is the symphony that gave Dvořák international recognition.

For more information, please visit [ptsymphony.org](http://ptsymphony.org).

## Choral Belles Mark 30 Years of Song

The Choral Belles concluded their winter season with several concerts at senior living facilities and charitable organizations throughout the Olympic Peninsula. Our December Tree Lighting performance helped raise money and provided staples for the East Jefferson County Food Bank.

In addition, our friends and family benefit concert generated \$1,420 in donations to the Port Ludlow Beach Club Accessibility Project, which supports seniors with mobility challenges.

The Choral Belles will be launching their spring concert series and celebrating 30 years of joyful song. If you enjoy singing, we invite you to join our dynamic group by attending our first rehearsal on **Thursday, February 5**, 4:30 p.m., at the Beach Club. The Beach Club is located at

121 Marina View Drive in Port Ludlow. For more information, please contact Judi Smith at 360-301-1162 or email her at [judi\\_richard@msn.com](mailto:judi_richard@msn.com) or Lois Grazioli at 360-745-5070 or email Lois at [loisgrazioli@gmail.com](mailto:loisgrazioli@gmail.com).



## Port Angeles Field Arts & Events Hall - February Calendar of Events

The Donna M. Morris Theater at the Field Arts & Events Hall in Port Angeles hosts the following events in February:

**Every Castle, Ranked - Friday, February 6, 7 p.m.**  
A hilarious and tender solo show where Lindy West (NYT bestselling author of *Shrill*, and executive producer of the Hulu series of the same name) ranks castles, confronts childhood fantasies, and finds unexpected hope in toilets, butts, and the bittersweet truths of adulthood. Tickets \$22 - \$32 adult, \$16 youth under 18.

**Jovino Santos Neto Quinteto - Saturday, February 7, 7 p.m.**  
Expect an exhilarating journey through the rhythms and colors of Brazil, led by master pianist and composer Jovino Santos Neto. Tickets \$15- \$35 adult, \$12 youth under 18.

**Mamma Mia! Here We Go Again Sing-Along - Friday, February 13, 7 p.m.**  
Dress up and sing-along to Abba's greatest hits in the feel-good musical romance *Mamma Mia! Here We Go Again*. Pay-what-makes-you-happy event.

**The Three Italian Tenors - Saturday, February 14, 7:30 p.m.**  
On Valentine's Day - Direct from Rome, The Three Italian Tenors perform original arrangements of universally loved Italian song and tenor arias. Tickets \$35 - \$58.

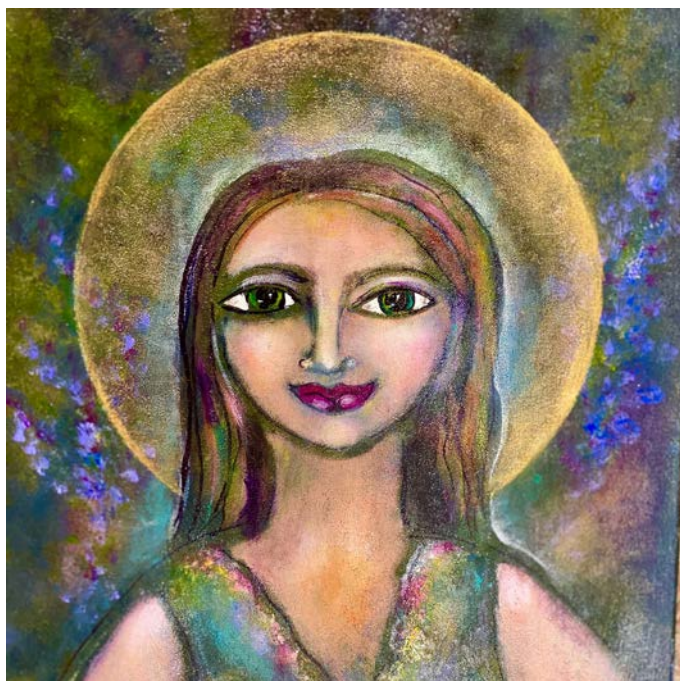
**The Flying Karamazov Brothers: Juggle 'Till You Drop! - Friday, February 20, 6:30 p.m.**  
This family-friendly show features four self-proclaimed eccentric lunatics performing stunts so daring, so silly, you'll wonder how they're even possible! Tickets \$25 - \$45 adult, \$22 youth under 18.

**Nat Geo Live: Robbie Shone, Adventures in Caving - Thursday, February 26, 7 p.m.**  
Nat Geo Live brings real explorers from the field to your city, live on stage! Descend into the darkness with photographer Robbie Shone to see the world's most remote places. Tickets \$25 - \$45 adult, \$15 - \$25 youth under 18.

For more information, please visit [fieldhallevvents.org](http://fieldhallevvents.org). To purchase tickets, please visit [fieldhallevvents.org/tickets](http://fieldhallevvents.org/tickets). Field Hall is located at 201 W Front Street in Port Angeles, WA.



## Northwind Art's Exhibits and Classes



*Self Love by Jan Jorgensen*

At Northwind Art's Jeanette Best Gallery, the Confluence and Showcase 2026 exhibits are in full swing. Together, these exhibits present the artwork of makers from around the Olympic and Kitsap peninsulas.

The Confluence exhibit pairs the art of sculptor Kristin Tollefson and naturalist Darwin Nordin. Both artists find their inspiration in the natural world.

The new Showcase exhibit features the artwork of several new artists including Lucia Enriquez, Lacy Muhich, Melinda Robinson, and Linnie Hodge.

Jeanette Best Gallery is open Thursday through Monday, noon to 5 p.m., and 5 p.m. to 8 p.m. every first Saturday of the month during Art Walk (February 7, March 7). The gallery is located at 701 Water St. in Port Townsend. For more information, please visit [NorthwindArt.org](http://NorthwindArt.org).

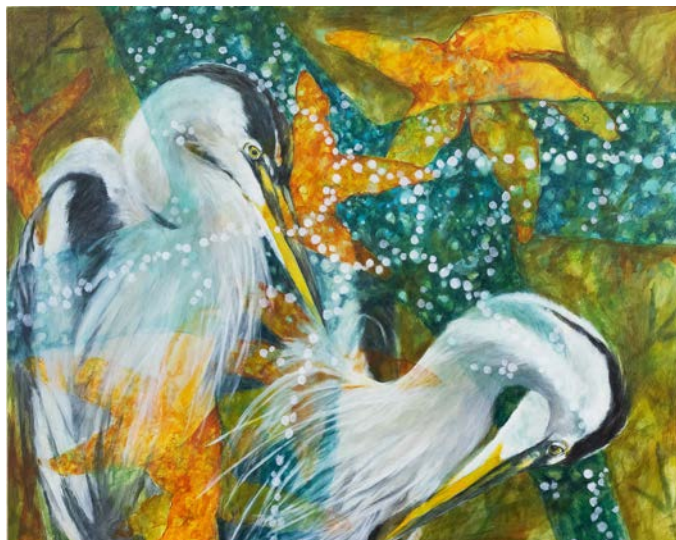
### Northwind Art School

Throughout February, Northwind Art School at Fort Worden State Park offers an expanded slate of classes and open studios, including the Paint from Poems workshop that gives participants a chance to exhibit their work at Jeanette Best Gallery, March 19 - May 4. February offerings include:

- Every Tuesday, February 3, 10, 17 and 24: Open Creative Studios at Northwind Art

- February 5: Collage and Pop-up Valentine Cards with Anne Schneider and Carol Nielsen
- February 6: Women in Art History: Frida Kahlo with Lorelei Amato
- February 7 and 8: Paint from Poems: Ars Poetica with Meg Kaczyk
- February 8: Watercolor: Floral Design in Sumi Painting with David Repyak
- February 13: Printing with Everyday Objects with Jodi Ericksen
- February 14: Painting Self Love with Intentional Creativity with Jan Jorgensen
- February 15: Finding Yourself in Art: A Creative Writing Workshop with Tara Campbell
- February 15: Make & Wear Earrings: Stenciled Enamel Jewelry with Aran Galligan
- February 15-March 22: Foundations in Drawing Level 2 with Anne Pfeiffer
- February 15-March 22: Color Fundamentals with Anne Pfeiffer
- February 17: Collage Series Adventure with Anne Schneider
- February 27-April 3: Watercolor Painting Level 2 with Suzanne Lamon
- February 28: Fabric Maché Bowls with Kate Dwyer,

To learn more about classes and enroll in a class, please visit [NorthwindArt.org](http://NorthwindArt.org) and select Take a Class. The Northwind Art School at Fort Worden State Park is located at 200 Battery Way in Port Townsend.



*Constellation by Darwin Nordin*

## Port Ludlow Art League - Artists of the Month

### Featured Artists – Port Ludlow Art League Members

Sweet Somethings is a compelling theme for an art exhibit, expressing ideas of comfort, indulgence, and memory. Sweets are more than just food; they are symbols of celebration, comfort, childhood nostalgia, and even contemporary consumer culture.



During February, you can enjoy this sweet treat of artwork at Sound Community Bank and online at [portludlowart.org](http://portludlowart.org).

A reception for the artists participating in this exhibit is set for Wednesday, February 11, 4 – 5 p.m. in the lobby of the bank, and 5 – 6 p.m. at the adjacent Port Ludlow Art

League Gallery. The bank and gallery are located at the corner of Oak Bay Rd. and Osprey Ridge Dr. in Port Ludlow. Enjoy shopping at the gallery Tuesday – Saturday, noon to 4 p.m.

For more information, please email [info@portludlowart.org](mailto:info@portludlowart.org) or visit [portludlowart.org](http://portludlowart.org).

## Thanks for Your Donations

OlyCAP would like to thank the Port Ludlow community, Port Ludlow Yacht Club, and PSO Bluebills for assisting with monies, shopping, and wrapping Christmas gifts for low-income families. This year, 31 kids received toys and were very appreciative of your generous support.

Olympic Community Action Partnership (OlyCAP) is a 501(c)(3) nonprofit organization dedicated to serving individuals and families across Clallam and Jefferson Counties in Washington State. OlyCAP provides housing assistance, food security, early childhood education and community support. For more information about OlyCAP, visit [olycap.org](http://olycap.org).



## Port Ludlow Art League - Jeweler of the Month

### Featured Jeweler – Aran Galligan

Aran has been working in metals for 30 years, earning a BFA in Material Studies and Metal from Virginia Commonwealth University and an MFA in Metal from SUNY New Paltz. They have also taught metalsmithing and craft-based business classes nationwide.

As a versatile materialsmith, Aran's jewelry incorporates whatever material excites them at the moment. Drawing from the history of arts and crafts and modern design principles, their work often incorporates a technology-meets-tradition design. For more information about their jewelry, please visit [AranMade.com](http://AranMade.com).

For their jewelry exhibit, Aran is featuring jewelry from their Beachcomber Collection. The collection includes



hand-forged and fabricated mixed metal pieces with precious and non-precious stones, inspired by shoreline treasures and ancient relics.

During February, Aran's jewelry will be on display at the Port Ludlow Art League Gallery, Sound Community Bank, and online at [portludlowart.org](http://portludlowart.org).

The public is invited to attend a reception for Aran on **Wednesday, February 11**, from 4 to 5 p.m. in the lobby of the bank and 5 to 6 p.m. at the adjacent Port Ludlow Art League Gallery. The bank and gallery are located at the corner of Oak Bay Road and Osprey Ridge Drive in Port Ludlow. The gallery is open Tuesday through Saturday from noon to 4 p.m.

For more information, please email [info@portludlowart.org](mailto:info@portludlowart.org) or visit [portludlowart.org](http://portludlowart.org).



## Port Ludlow Art League February Program Meeting Speaker — Iain McArthur

The Port Ludlow Art League welcomes portrait artist, Iain McArthur, as the speaker for their February Program Meeting.

Portraiture is all about capturing a person's likeness, personality, and identity. As a portrait artist, Iain prefers using pen



and ink for his illustrations and acrylics for his paintings. However, he endeavors to go beyond likeness and personality. Iain states, "I want to create something visually appealing that tells a story revealing complex emotions." He achieves this goal through the meticulous planning of his work where several different processes and ideas

come together to create a dramatic portraiture. Additionally, Iain places contrasting elements together to create tension, provoke thought, enhance meaning, and induce an emotional response in the viewer.

Iain's presentation will discuss portraiture, the importance of shapes, and how to achieve mood. In addition, Iain will direct a group drawing session, sharing his tips and techniques.

The program meeting is scheduled for **Wednesday, February 18**, 1 – 3 p.m., at the Port Ludlow Beach Club. The Beach Club is located at 121 Marina View Drive in Port Ludlow. Guests are welcome to attend for a \$5 fee. For more information, please visit [portludlowart.org](http://portludlowart.org).

## Chimacum High School Band to March in National Independence Day Parade

Port Ludlow Performing Arts (PLPA) is proud to celebrate an extraordinary milestone for our local students. The Chimacum High School Cowboy Marching Band has been selected to represent Washington State in the National Independence Day Parade in Washington, D.C. on **July 4**. This prestigious invitation coincides with the nation's 250<sup>th</sup> anniversary and marks a once-in-a-lifetime opportunity for these talented young musicians.

For PLPA, this milestone is especially meaningful. For nearly 30 years, the PLPA has been committed to supporting music

education in the Chimacum School District by supplying instrument rentals, equipment, uniforms, music resources, travel assistance, and educational programs. Seeing our local band earn national recognition is a powerful reminder of what sustained community support can help make possible.

The news was revealed during the Veterans Day program at Chimacum High School on November 10, 2025. Principal Ryan Stevens proudly announced the band's selection, prompting cheers and applause from the audience. This prestigious invitation recognizes the dedication and hard work of the band members and their esteemed director, Daniel Ferland.

This selection is a major achievement for the band, acknowledging their recent accomplishments, including winning Best March at the regional competition last spring. The band's commitment to excellence has clearly resonated beyond our local community, earning them this national spotlight.

Now the real work begins. Sending the entire band to Washington, D.C. is a significant undertaking and fundraising efforts are already underway. Every contribution, no matter the size, will help these talented young musicians represent Washington with pride on the national stage. To make a donation, please visit [zeffy.com/en-US/donation-form/chime-in-with-the-band](http://zeffy.com/en-US/donation-form/chime-in-with-the-band). If you would like to donate by check, please make checks payable to CHIME IN and mail your check to PO Box 631, Chimacum, WA 98325.

The Chimacum High School band's participation in the National Independence Day Parade is a source of immense pride for these kids and our community. Let's support these exceptional students as they prepare to represent Washington State and showcase the talent and dedication fostered within our schools and celebrate the 250<sup>th</sup> anniversary of our nation's independence in a truly unforgettable way.

## Port Ludlow Photographers

On **Monday, February 23**, the Port Ludlow Photographers will meet from 10 a.m. to noon at the Bay Club.

Be sure to submit your winter photos to Aven Andersen at [aven1936@live.com](mailto:aven1936@live.com) before the meeting to share with attendees. Meeting topics for discussion will include black and white photos, filters, and organizing your photos.

The group is open to everyone. No photographic experience is required and there are no dues. Join us to learn, share, and meet local photographers. Hope to see you on the 23<sup>rd</sup>!

The Bay Club is located at 120 Spinnaker Place in Port Ludlow. For more information, please contact Aven Andersen at [aven1936@live.com](mailto:aven1936@live.com).

# Village News

## Bay Club / South Bay

### SBCA Happenings

by Carolyn O'Keeffe, President, SBCA Board of Directors

Welcome to February 2026!

Our Activities Committee's subcommittee on 'Informational and Educational Presentations' has put together quite a stellar list of presentations scheduled for the rest of the year. Continuing with us through **May** will be David Brownell's presentations on the First Nations. His presentations are free to all and open to the greater Port Ludlow community. Added to our schedule will be presentations by Jefferson Healthcare, as well as a couple of presentations on the Central Intelligence Agency by a recently retired CIA employee who lives in our South Bay community. We are also excited to have Chimacum School District Superintendent Scott Mauk join us to share exciting news and initiatives in his school district.

Our Pancake Breakfast on **February 6** will support Center Valley Animal Rescue and their mission to find loving homes for all adoptable animals in their care, to offer permanent sanctuary to the domestic animals that cannot be adopted, and to the rehabilitation and release of wild animals.

Our Health and Fitness Committee has been hard at work, too. Based on their recommendations, our Club updated several new pieces of equipment for our weight room and a new cardio machine for our cardio room. The new cardio machine is a Stepmill, a very popular cardio machine that simulates climbing endless stairs. It will provide users with an intense, low-impact workout that builds lower body strength (glutes, quads, hamstrings, calves), boosts cardiovascular fitness, and engages the core for balance. It has replaced the Stair Stepper that was at the end of its useful life. Besides this cardio machine, our weight room got an extreme makeover. The update included the swap out of the Nautilus/Universal gym system (20+ years old) with commercial grade Matrix brand machines: leg press, functional trainer, leg extension/curl, pec/delt, pulldown/row, and multi-press. The objectives for these changes were to enhance the quality of equipment without losing current capabilities of the machines we replaced, to provide a better user experience, and to create a safer space in which to work out.

In other Facilities news, we have been doing a few preventative maintenance measures. We completed our

### SBCA Important Dates

**Friday, February 6**, 8:30 – 10 a.m. – Pancake Breakfast benefitting Center Valley Animal Rescue

**Thursday, February 12**, 9:30 a.m. – Monthly Board meeting \*\*

**Thursday, February 12**, 1 p.m. – First Nations presentation with David Brownell. "Old Patsy's Potlach of July 4<sup>th</sup>, 1891" \*\*\*

**Friday, February 13**, 5 p.m. – Members Social – bring your favorite chocolate desserts!

**Friday, March 6**, 8:30 – 10 a.m. – Pancake Breakfast benefitting the PLVC Trails Committee

**Thursday, March 12**, 8:30 – 10 a.m. – Monthly Board meeting \*\*

**Thursday, March 12**, 1 p.m. – Richard Tucker, Jefferson County Land Trust

**Friday, March 13**, 5 p.m. – Members Social – bring your favorite appetizers!

**Thursday, March 19**, 1 p.m. – First Nations presentation with David Brownell – topic TBD \*\*\*

All Thursdays 4:00 p.m. – Member's Lounge

To keep informed of all dates and times, please visit *sbc.a.club*

\*\* All SBCA members are welcome.

\*\*\* All Port Ludlow residents are welcome.

preventative maintenance measures for major electrical equipment earlier in the fall and are now focused on determining the state of our plumbing infrastructure for both domestic water and sanitary water systems. Remaining landscaping work, including additional root removal, soil enhancement, and any new plantings will occur as we move into better weather (March/April). Prior to that work, repair of the concrete curbs and sidewalks will occur when weather permits.

In January, the SBCA Board of Directors launched its new committee, The Long-Range Planning Committee. Currently, the Committee meets on the Tuesday after the SBCA Board meeting at 1 p.m. in the Conference Room of the Bay Club.

Lastly, on **Monday, February 16**, our nation will celebrate Presidents' Day, a federal holiday since 1879, when it was first implemented to honor our first US President, George Washington.



## The Power of Volunteering

by Gary Hammond, Treasurer, Port Ludlow Village Council

I am the Treasurer for the Port Ludlow Village Council (PLVC), and I am a volunteer. Everyone on the PLVC is a volunteer. The Council is a 501(c)(3) nonprofit organization. Not only are the Council members volunteers, but everyone who contributes to our committees are also volunteers. You probably know our Trails Committee best as they work tirelessly to keep the Port Ludlow trails safe for us all, but all of our committees are listed on our website, [portludlowvillagecouncil.org](http://portludlowvillagecouncil.org).

On average, volunteers for nonprofit organizations in the United States give 66 hours annually. If you break that down by month and then by week, it is less than two hours a week per person. Most nonprofit organizations could not exist without their volunteer workforce.

If you look up volunteering on the internet, you get this: "The power of volunteering lies in its dual impact: it transforms communities by addressing needs while profoundly benefiting the volunteer by boosting mental and physical health, reducing stress, increasing happiness, building social connections, and fostering a deeper sense of purpose, accomplishment, and self-esteem, creating a cycle of positive growth for everyone involved."

Did you catch the phrase 'increasing happiness?' Wow! The simple act of volunteering can bring more happiness into your life. That's a nice benefit. But maybe the thought of volunteering seems like more of a time commitment than you're willing to give right now. Good news. Volunteering does not have to mean a lifetime commitment. Most organizations have different volunteer models to meet **your** needs. Committee work is a great place to start but it can require, usually, a monthly meeting commitment. PLVC events, however, can be an opportunity to dip your toe in the water to see how much time and effort you want to spend. You can be a one-time, event specific volunteer. It's all up to you.

Although we host many events throughout the year (see our online calendar), the PLVC is hosting a special event this year in August. What was previously known as the *Opportunity Fair* has now been rebranded to *Port Ludlow Connects*. This is a great place to find out about different ways to become involved in the community. Whether it's taking a class, finding a club that interests you, new ways to exercise your body, or opportunities to volunteer — it's all there under one roof. Look for announcements for this exciting event in all the usual places, and check our website regularly for updates.

Whether you volunteer with the PLVC or any other organization, thank you. Your efforts do not go unnoticed. Here's to a new year with opportunities for you to put some more happiness into your life.

**Michael Haberpointner, PT, DPT**  
**Timothy Mansour, PT, DPT**  
**Faye King, PT, DPT**  
**Bailey O'Hotto, DPT**


**ACTIVE LIFE**

**PHYSICAL THERAPY**

*Balance Training • Spinal Rehab • Rehab After Surgery*  
*• Vertigo Treatment • Personal Training*  
*Medicare and most insurances accepted*  
[www.activelifetherapy.com](http://www.activelifetherapy.com)  
9483 Oak Bay Rd. • Port Ludlow, WA 98365 • (360) 437-2444



**Port Ludlow Community Church**

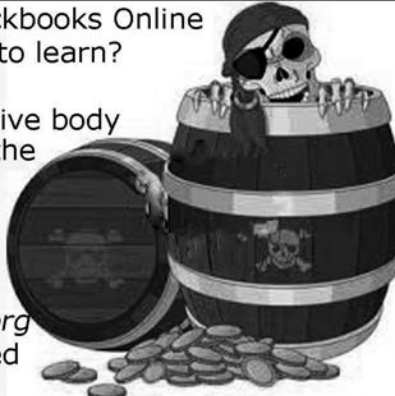


9534 Oak Bay Rd  
360-437-0145  
[plcc@olympus.net](mailto:plcc@olympus.net)  
Rev. Dr. Kevin Hall  
Join us Sundays at 10:30!

*A church by a clearcut  
above a gas station next to recycling  
in a village in the woods by the bay*

**Do you know Quickbooks Online  
or would you like to learn?**

PL Voice needs a live body  
or two to track the  
advertising that  
pays for printing  
this magazine.  
Please contact  
[finance@plvoice.org](mailto:finance@plvoice.org)  
to join us. We need  
**YOU.**



# Beach Club / North Bay

## Update from the Manager

by Mike Wilson, General Manager

As we begin 2026, several important initiatives are underway at the Beach Club. We recently welcomed our new Accounting Manager Kathi Pugh, who has already made valuable contributions by refining our accounting processes. I appreciate the time and expertise she has dedicated to improving our operations.

We are also preparing to launch our new HOA software for residents in the coming months. Phil Racine, Bob Shaw, and Kathi Pugh have invested extensive effort to ensure data accuracy and system readiness. Their commitment to this project is greatly appreciated.

Our upcoming LMC Wine and Cheese Social will take place on **Friday, February 13**, from 5–7 p.m. in the Bayview Room. Please notify the front desk if you plan to attend.

I'm pleased to share that this year's Breakfast with Santa was a tremendous success, hosting more than 40 children and 44 adults. Thank you to all the volunteers who helped make the event memorable.

The Polar Plunge also saw strong participation, with 20 brave individuals taking the dive and many more cheering them on. As a firsttime participant, I found the experience invigorating, and I hope even more of you will join next year.

As we move quickly toward our Annual Meeting in April, I look forward to continued engagement with our community.

As always, if you have questions or comments about this article or the on-going work at the Beach Club, I can be reached at 360-437-9201 or by email at [GM@LMCBeachClub.org](mailto:GM@LMCBeachClub.org).

### LMC and the Beach Club

Phone: 360-437-9201

Email: [GM@LMCBeachClub.Org](mailto:GM@LMCBeachClub.Org)

Sign up for our monthly e-*Navigator* by emailing the above address.

Visit [LMCBeachClub.org](http://LMCBeachClub.org) for more information about your North Bay HOA

### Reminder to Dog Owners

So we all can enjoy our walks, please carry a plastic bag and clean up after your dog, large or small!



*continued from page 7*

Department of Emergency Management (DEM). This month's workshop will take place on **Thursday, February 19**, from 10:30 a.m. – 12:30 p.m. We will discuss the types of disasters that can affect Jefferson County and explore the best ways to prepare for them. Visit [jclibrary.info](http://jclibrary.info) to register.

Teens are invited to test their problem-solving skills in our exciting new Escape Room challenge: *Escape the Dragon's Dungeon*. Sign up for one of four 20-minute sessions taking place on **Thursday, February 26**, from 3 – 5 p.m. Can you beat the countdown? Work together to find treasure, roll the dice, and make it out in time – just be careful not to wake the dragon! Visit [jclibrary.info](http://jclibrary.info) to save your spot.

For complete program details and our calendar of events, please see our website, [jclibrary.info](http://jclibrary.info). Visit the Jefferson County Library District at 620 Cedar Avenue in Port Hadlock. For questions or assistance, call 360-385-6544 or email [information@jclibrary.info](mailto:information@jclibrary.info).



# Village Council

## Port Ludlow Village Council Board Meeting Summary

This briefing synthesizes the critical information presented at the Port Ludlow Village Council meeting on January 6.

### Jefferson County PUD Update

- **Power Grid Update:** Weathering the atmospheric rivers
- **Widespread Impact:** At the peak of the storm, over 10,200 homes, more than 50% of all PUD customers, lost power.
- **Understanding Repair Times:** The complexity of the damage determines how long repairs take. A standard utility pole takes 6-8 hours to repair, while a massive 75-to-90-foot transmission pole can take up to 12 hours to replace.
- **Help from Our Neighbors:** Our local PUD received "mutual aid" from a neighboring public utility, demonstrating how these essential services cooperate during major weather events to restore power more quickly.
- **The Flow of Information - PUD Water System News:** Utility rate increases are being studied across the region, not just in Port Ludlow. These studies are necessary to determine how to fund the significant costs of maintaining and replacing aging infrastructure. A prime example is the Coyle water system, where a \$1.3 million contract was just approved to begin a major pipe replacement project.

### Port Ludlow Associates Update

- **Falls Terrace Development Update:** The new Falls Terrace development is still in a complex planning phase, with developers expecting to have more concrete ideas on the number and layout of home lots within the next month. In response to questions from residents passionate about the trail system, the council received direct reassurance that the beloved Falls trails will be maintained and that development will not involve clearing right up to the trail edges.

### Village Center, Roads, and the RV Park

- **RV Park Closure:** The Port Ludlow RV Park is currently scheduled to permanently close on October 31, 2026.
- **Village Center Entrance Repair:** The potholed

entrance road to the Village Center, located by the gas station, is slated to be repaved very soon.

- **Breaker Lane Traffic:** There is an ongoing community conversation about how to best manage traffic on Breaker Lane. Many drivers use it as a "shortcut," causing significant wear and tear on the private road.

**Local Real Estate Snapshot** For those with friends or family looking to move to the area, it was noted that Richmond American Homes has lowered the price of a house to \$550,000 and is also offering a 3% interest rate buydown for potential buyers.

### OWSI News

- **A Critical Request for All Residents:** The Cross-Connection Survey If you have not completed this survey from OWSI, do so! The State requires 100% participation.
- **What to Look for in Your Next Bill:** Your February OWSI bill will include a letter detailing two surcharges:
- Ice Pigging Surcharge
- **Wastewater Treatment Plant Surcharge** A new charge of approximately \$22 per billing cycle (every other month) to begin funding the treatment plant upgrade project.

### Council Business

- **The 2026 Council Budget is Approved:** The council reviewed and officially approved its operating budget for the 2026 fiscal year. The budget covers administrative costs and community events. While it projects a small deficit, the council confirmed it has sufficient cash reserves to cover all planned expenses.
- **Celebrating Our Trails and Volunteers:** The Trails Committee report highlighted the incredible dedication of our community volunteers.

### Village Council Meetings

**PLVC Board Meeting**  
**Thursday, February 5**  
3 - 5 p.m., Bay Club

**PLVC Workshop**  
**Tuesday, February 17**  
3 - 5 p.m., Bay Club

*plvc.org*

- In 2025, volunteers contributed over 1,573 hours to building and maintaining our extensive trail system. This amazing effort, combined with partnerships with local HOAs, is what makes our trail network a premier community asset for all to enjoy.
- **How You Can Stay Informed and Participate** Your voice and participation are vital to our community. Here are two immediate ways you can get involved:
- **Community Calendar:** The council website features a community calendar. All residents and local clubs are encouraged to submit their events to help create a central, go-to resource for what's happening in Port Ludlow.
- **Resident Survey:** The 2026 Resident Survey is currently live. Please take a few minutes to share your feedback and help guide the council's priorities for the coming year.
- **Starting this month:** It will be easier for residents to engage directly with our local public safety officials.
- **A representative from East Jefferson Fire Rescue** will now attend the council meeting every month.
- **A representative from the Sheriff's Office** will attend the meeting on a quarterly basis. This is a great opportunity to ask questions and get to know the people who serve our community.

Thank you for taking the time to catch up on what's happening at the Council. All residents are warmly invited to attend future Village Council meetings. We look forward to seeing you, hearing your ideas, and welcoming you into our active and engaged community of volunteers!

### Being Safe While Walking

**Pedestrians:** Walk facing oncoming traffic. Wear light-colored or reflective clothing so that you can be seen easily in the dark.

**Drivers:** Watch out for walkers. Remember, they can't always see you coming.





**Camron Meikle, Au.D.**  
Board Certified Audiologist

*"When experience makes the difference."*  
Comprehensive Hearing Evaluations  
Digital Hearing and Assistive Listening Devices  
Hearing Device Repairs & Batteries  
Insurance Billing • Physician Referrals

**Call For A Hearing Consultation:**  
**360 437-7767**  
**115 Village Way, Port Ludlow**



**Black Bear Diner**  
*Good Old-Fashioned Family Food!*

1471 E. Washington St., Sequim, WA    *Comfort Food Classics*

**Breakfast, Lunch Or Dinner**  
**Served Any Time Of The Day!**

ORDER ONLINE! <https://order.blackbeardiner.com/>

## Do It Right Roofing & Construction

*Located locally in Port Ludlow • Excellent Local References*  
*Quality and Customer Satisfaction is our #1 Goal*

<ul style="list-style-type: none"> <li>◆ All Types of Composition</li> <li>◆ Metal, Cedar Shakes</li> <li>◆ Re-Roofs</li> <li>◆ New Construction</li> <li>◆ All Types of Repairs</li> </ul>	<ul style="list-style-type: none"> <li>◆ All Types of Construction</li> <li>◆ Repairs</li> <li>◆ Remodels</li> <li>◆ Decks, Siding</li> <li>◆ Custom Woodwork</li> </ul>
---	--

General Contractor's License  
Lic # DOITRIR943Q  
Bonded, Insured

William Bacchus  
Phone: **360.774.6348**  
email: [doitrightroofing@msn.com](mailto:doitrightroofing@msn.com)



# Port Ludlow Pharmacy

**YOUR NEIGHBORHOOD PHARMACY**

Access prescription services, schedule vaccinations and boosters, and find a wide selection of over-the-counter medications. Contact us for billing assistance, questions, or to transfer your prescriptions.

9481 Oak Bay Road, Suite A, Port Ludlow  
360.379.2254 | [jeffersonhealthcare.org](http://jeffersonhealthcare.org)

Jefferson  
Healthcare

**Port Ludlow Art League**

# ART & GIFTS Gallery

Hours: Noon - 4:00PM  
Tuesday - Saturday

**Sweet Somethings!**

**SPECIAL EVENT & ARTIST RECEPTION**  
Wednesday, February 11th  
Noon - 6PM

Located next to Sound Community Bank  
9500 Oak Bay RD, Suite B, Port Ludlow  
[www.portludlowart.org](http://www.portludlowart.org)

**GIFTS REFRESHMENTS & DRAWING**

**John L. Scott®**  
REAL ESTATE

56 Village Way  
In the Port Ludlow Village Center

# BUYING OR SELLING

We will get you where you need to go with knowledge, experience & integrity.

Call us 360-382-7709  
[www.portludlowoffice.johnlscott.com](http://www.portludlowoffice.johnlscott.com)

Scan the QR code for a free estimated valuation of your home.



# Medically Endorsed & Approved Cannabis Retailer

Sea Change Cannabis is locally owned and operated. As Jefferson County's first Retail & Medical Cannabis license, we bring the most experience in our area. What is Sea Change?

A substantial change in perspective, especially one that affects a group or society at large, on a particular issue.

We are leading the Sea Change in Cannabis Culture!

Come in and shop our diverse assortment of products!

**Open 7 days a week**

**Sea Change Cannabis**  
11323 Rhody Drive  
Port Hadlock-Irondale, WA 98339  
**(360) 385-1320**

\*Required Disclaimer\* Our products have intoxicating effects and may be habit forming. Marijuana can impair concentration, coordination and judgment. Do not operate a vehicle or machinery under the influence of this drug. There may be health risks associated with the consumption of these products. For use only by adults twenty-one and older; keep out of reach of children.

Servicing Clallam and Jefferson Counties!

# IN-HOME CARE AGENCY

Helping you maintain independence and quality of life!



**Services:**

- Bed Bound Care
- Companion Care
- Meal Preparation
- Supportive Hospice Care
- Medication Reminders
- Transportation/Errands
- Personal Care Assistance (bathing, grooming, dressing, and dressing)
- Light Housekeeping (laundry, changing bed linens, tidying up, ect.)

**Ashley Travis**  
Co-Founder/Client Care Director

**Jaimey Quinonez**  
Co-Founder/Administrator

**Tanya Boone**  
Caregiver Supervisor

  
**OLYMPIC PENINSULA HOME CARE**

 (360)477-4695  
 [info@olyphenhomecare.com](mailto:info@olyphenhomecare.com)  
 [www.olyphenhomecare.com](http://www.olyphenhomecare.com)



## A NEW CHAPTER BEGINS AT PORT TOWNSEND SENIOR LIVING



OFFERING: INDEPENDENT & ASSISTED LIVING



Call for Your Exclusive Tour!  
**360-641-7436**

- A vibrant, creative resident community
- Daily opportunities for art, music, writing & wellness
- Spacious studios, 1BR & 2BR apartments
- Emergency call system and lanyard.
- Close access to all Jefferson Health Care

\*Formerly known as Avamere of Port Townsend



**PORT TOWNSEND**  
SENIOR LIVING

by **COGIR**



## MARKSMANSHIP FUNDAMENTALS

Firearms Education  
And Training



Ryan Marshall  
Pistol Instructor, Range Safety OFC  
Port Ludlow, WA  
(509) 341-4488  
[MarksmanshipFundamentals.com](http://MarksmanshipFundamentals.com)

## SALISH SEA FELLOWSHIP

Join us for Sunday Services!

(2:00 at CUMC, 130 Church Lane, Port Hadlock)

2/1: Joseph Bednarik returns

2/15: SSF President, Nils Pedersen, shares

Find out more information at [salishseafellowship.org](http://salishseafellowship.org)



Port Townsend • [KPTZ.org](http://KPTZ.org)



## PORT LUDLOW MINI STORAGE

Your local, secure storage solution

### OUR SERVICES

- ✓ Enclosed units in multiple sizes
- ✓ Outdoor parking for boats, trailers & RVs
- ✓ Convenient. Reliable. Right here in Port Ludlow

CALL NOW ► **360-344-2592**

[plministorage@gmail.com](mailto:plministorage@gmail.com)

720 Walker Way  
Port Ludlow, WA 98365



*Dedicated to Life-Long Learning*

Lessons in Guitar, Piano, Voice, Ukulele,  
Mandolin, Composition, Music Theory

Adults and Youth

Serving Port Ludlow, Chimacum,  
Port Hadlock-Irondale, Port Townsend

[RareEarthMusicStudio.com](http://RareEarthMusicStudio.com)



# Recreation & Sports

## Trail Mix

by Larry Scott, Trails Chair

### “Port Ludlow – A Destination Hiking Village”

In the last *Voice* article, I provided an example of what Trails does about maintaining the over thirty miles of our own Port Ludlow community trails. It was an extensive To-Do list of tasks that included clearing downed trees, dropping and clearing leaning trees, adding steps, replacing steps, widening a trail, adjusting for the wet/mud, and so on, and so on; just a myriad of things to do both small and large. It stretched from one of our newest trails in the North the Oak Bay Trail (OBT) on Pioneer above the Firehouse to one of our oldest trails in the South the Around The Bay (ABT) at the far end of Ludlow Bay Road. And it also listed tasks to be done even further South on the DNR and Teal Lake trails, and West for the Timberton, both McCormicks, and Creek View Loop. (See [portludlowvillagecouncil.org/](http://portludlowvillagecouncil.org/)



Blowdowns on Mt. Wilder Trail.

Photo by John Fillers

[committees/trails](#) for more information.)

This Trail Mix edition will be shorter than usual because I want to save a little space for both a before and after picture. The trail in question was the Mt. Wilder to DNR trail that



L - R Larry Scott, Jeff Sarantopulos, Mark Makarowski, Tim Rensema opening up the Mt. Wilder trail

Photo by John Fillers

connects to the Olympic Terrace Trail near Crystal Court. There were three locations where blowdowns blocked the trail because of the so-called atmospheric river storms we had in December – lots of rain and gale winds.

Pictured here is the area where a typical local tree brought its entire root system down with it when it decided to take a rest. Upon being notified, part of our core group of dedicated Fun Day volunteers responded and did a remarkable job in opening up that trail again in a very short time.

If you want to come out for a Fun Day of camaraderie while helping to improve our community, send me an email at [mclgscott@cablespeed.com](mailto:mclgscott@cablespeed.com). “Let’s Keep Improving our Trails.”

## Bandon Dunes Trip

by Jim Mancill, PGA Head Professional, Port Ludlow GC

Bandon Dunes in mid-December on the south Oregon coast. That's where our group of eleven golfers from the Port Ludlow Golf Course headed for an epic golf getaway to the Bandon Dunes Resort.

A trip to Bandon would not be complete without a mix of sunshine, a little sideways rain, and, of course, 30 mph winds to make things interesting. We got them all. The group played the fantastic 19-hole short course called Shorty's (designed by Rod Whitman, Dave Axland & Keith Cutten, 2024) on day one, followed by Bandon Dunes (designed by David McLay-Kidd, 1999), Pacific Dunes (designed by Tom Doak, 2001) and finishing up at Old



L - R Jeff Forville, Jim Mancill, Bob Murphy, Erik Leonard at Bandon Dunes 1<sup>st</sup> Tee

Submitted photo

Macdonald (designed by Tom Doak & Jim Urbina, 2010).

As with any trip to the Oregon coast in December, weather was the most challenging thing to plan for. In the weeks ahead, our forecast continued to look bleak in terms of



L - R Jeff Forville, Roger Haskin, Mark Shafer, Bob Murphy, Linda Haskin, Alan Wolf at Shorty's

Submitted photo

“good” golf weather, but it didn't dampen the spirits of the group as we headed down to gather for four days of epic golf.

There is nothing more exciting or challenging as playing golf on true links golf courses, and the opportunities to try new and different shot making. For those of you who have not had the opportunity to make the trip down the coast to play Bandon, I hope you do as it is truly an experience that every golfer should have. And for the those of you who have, and most definitely the ones who have been multiple times, I am sure that each visit is special and provides memories for a lifetime. One of the great pleasures of playing golf is the time we spend with others and sharing the enjoyment of the journey each and every round. Our Bandon adventure was even better, as we spent our four days playing golf, enjoying good food, and reliving the rounds with our stories of the day.

It is a pleasure to share a few of our photos from the trip and hope that we will be able to bring you more from future golf adventures! See you on the trails!

**plvoice.org**

Breaking News – Archive of Past Issues

Early Access to News Articles

Local Arts – Letters to the Editor





## Port Ludlow Hiking Club

by John Nuerenberg, Port Ludlow Hiking Club

Hikers meet at the Bridge Deck in Port Ludlow on the day of the hike at 8:15 a.m. to get directions to the trailheads, arrange carpools, and depart at 8:30 a.m.

Those on the hiking email roster receive an update the week of a scheduled outing. If you would like to be added to the email roster, send a note to [plhikingclub@yahoo.com](mailto:plhikingclub@yahoo.com), or go to the club's website at [portludlowhikingclub.com](http://portludlowhikingclub.com) and click on "Contact" to send a message. Anyone may join in the hikes; you don't have to be a member of the email roster or club.

### Friday, February 13 – Dosewallips State Park

This is a heavily hiked and well-maintained trail in Dosewallips State Park. It is an easy trail of 3.5 miles with an elevation gain of 400 feet. The trail is a nice hike in typical Northwest woods but also follows along the Dosewallips River for some great views. The rating for this hike is an E2. A Washington State Discover Pass is required. Restrooms are available at trailhead. Hike leader: John Fillers, 360-215-4049.

### Friday, February 27 – Ueland Tree Farm Trails

This hike is in Kitsap County at Ueland Tree Farm, west of Kitsap Lake and Bremerton. This is a great hike that is planned for a trip to both Dickerson Creek Waterfall and Zack's Lookout.

If weather is not cooperating for the moderate 800 ft climb on Dickerson Trail to Zack's Lookout to see views of the Olympics and Hood Canal, we may take an easier walk on the South Loop Trail. Either way there will be a hike through a great forest. Plan for a 6–7-mile hike of 3 to 3 ½ hours that is a combination of easy and moderate on logging roads and trails.

It is about a 45-minute drive to the trailhead (address: 4824 Leber Lane NW, Bremerton WA 98312; Google Coordinates: 47.580083, -122.717555). Hike will start at about 9:30 a.m. from the trailhead.

Be prepared for late February weather – likely cool, with a chance of showers. Make sure you have water and bring your hiking poles if you normally use them. The tree farm is dog friendly. The only traffic in the tree farm is the occasional logging truck and related vehicles. There are no restrooms at the tree farm. However, there are two gas stations close by (a Liberty and a Shell) at the intersection of Chico Way NW and Erlands Point Rd NW which you will pass shortly after exiting Hwy 3.

If you are interested in lunch (and restrooms!) after the hike, there is an excellent pub, 19<sup>th</sup> Hole Bar & Grill, across from the Shell station on Erlands Point Rd NW. Ueland Tree Farm Map & other info at [uelandtreefarm.com](http://uelandtreefarm.com).

Hike leader: Gary Hicks, [GLHicks01@gmail.com](mailto:GLHicks01@gmail.com), 510-566-2401.

**Wednesdays: Timberton Loop.** Walk the 4.2-mile Timberton Loop. Enjoy views of the Olympic Mountains. This is a no-leader hike. Meet other walkers at the parking lot trailhead on Timberton Drive at 9 a.m.

**Monday/Wednesday/Friday - 8 a.m.** Join the "Trail Club Group" that meets at the golf club parking lot for a self-led walk on the abandoned golf cart path trail or other alternative route.

For more hiking information, map of the Port Ludlow Trails and descriptions and pictures of previous hikes and other destinations, go to [portludlowhikingclub.com](http://portludlowhikingclub.com).

Speed Limit  
in Port Ludlow Bay is  
5 knots

- No Wake, It's the Law! -

# Classifieds

The monthly cost of classified ads is \$17 for less than 25 words and 60 cents per word thereafter. There is a prepayment discount, 10% for 6 months or more. We accept "personal" ads such as public "thank you" ads. We do not accept ads of a political nature. The deadline for new ads, changes, and cancellations is the 8th of the preceding month. We send out invoices on the 1st of the month. We normally send emailed invoices but will mail them if you request. Ads will run until canceled. Cancel ads by sending email to [classified@plvoice.org](mailto:classified@plvoice.org). **org.** You may pay by check, money order, credit card or bank transfer. Email your ad and contact information (name, billing address, phone numbers, and email address) to [classified@plvoice.org](mailto:classified@plvoice.org).

---

## COMPUTER & TECHNOLOGY

**PT Computers:** we work on Apple, Windows and Linux computers. Diagnostics & Repairs, Virus Removal, New Computer Set Up. Please call 360-379-0605 to set up an appointment.

---

## FINANCIAL SERVICES

**Accounting:** Bookkeeping services, payroll & payroll taxes, tax return preparation. Need someone to get your books ready for tax season or to keep the books up to date? Do you need help with personal or business tax return preparation? More than 20 yrs. experience. email Rhonda @ [r3granger@gmail.com](mailto:r3granger@gmail.com) or call 360-358-5340 for more info.

---

## FOOD & BEVERAGE

**Dinners To Go** service offered by GBF Catering on Tuesdays and Fridays. Order online and see additional information at [GBFcatering.com](http://GBFcatering.com). Catering services available in Jefferson, Clallam and Kitsap Counties. For more information call 360-774-0848.

**Baker 4 hire:** Offset Bakery will cater your next event. Cookies, cakes, scones, quiche. Pies the limit. Email [offsetbakerywashington@gmail.com](mailto:offsetbakerywashington@gmail.com)

---

## HEALTH & BEAUTY

**Physical Therapy in Port Ludlow.** Active Life Physical Therapy. Our services include balance training, spinal rehabilitation, vertigo treatment, and joint replacement therapy. Medicare accepted. 360-437-2444. [Michael@activelifetherapy.com](mailto:Michael@activelifetherapy.com).

**Tootsies: Manicures & Pedicures.** 7551 Oak Bay Rd (across from Port Ludlow Fire Hall) Available by appointment, 360-437-2332. Neighborhood fun!

**Caregiver Available in Port Ludlow.** Providing in home care services, light housekeeping, errand and grocery assistance, medical transportation, and companionship. Certified and Experienced. Call or text Susan at 360-301-0200.

**A cleaner healthier body fixes itself.** Safely detox heavy metals and Volatile Organic Compounds (VOC's) from the body. Lose weight safely/effectively. Catherine 360-774-1431.

**Sacred Healing Arts:** Acupuncture, Sound healing, barefoot massage, cranial and nerve therapies to clear unprocessed emotional trauma to connect you with your embodied joy! Contact Jillian Rifkind L.Ac, EAMP at 360-523-2091 or visit [joypointclinic.com](http://joypointclinic.com). 9481 Oak Bay Road.

**Soul Serenity Myofascial Wellness:** Sherry Brown, LMT Myofascial Specialist, J.F.Barnes Method © Expert Level Therapist 24 yrs Experience. Offering Gentle, Effective and Lasting Treatments for Chronic Pain, Migraines, TMJ/Neck, Shoulder, Carpal Tunnel, Sciatica, Hip, Knee, Plantar Fasciitis. Work and Sports injuries. Pre and Post

Surgical Care, Scar Release. Mobility Improvement, Stress, Anxiety, Trauma & PTSD. Lymphatic Drainage, And more! No case too complicated. Astounding results. Highly Recommend by Dr's, PT's, and many other health professionals. By Appointment Only. 111 Village Way. Book on line: [www.SoulSerenity.Biz](http://www.SoulSerenity.Biz) or Call 253-961-7595

---

## Experienced Certified Home Health Aide – Available in Port

**Ludlow:** Compassionate, reliable care for those in need of support. Services include companionship, shopping, light housekeeping, meal preparation, personal hygiene assistance, and transportation to medical appointments. Local Port Ludlow resident with references. Call or text Beth at 831-320-6924.

---

## HOME RENOVATION & DÉCOR

**Quality Painting with Affordable Pricing.** Exterior, interior. Pressure washing. Lots of local Port Ludlow references. Bonded & insured. License CBSPAP\*917CD. Call Tony Forrest, owner, CBS Painting, for a free estimate. 360-633-5702.

**Arnett's Affordable Home Improvement** - All remodeling and home repair, Kitchen and Bath Specialist, Tile, Stone, Hardwood and Laminate flooring, Construction, and repair of Decks. "When you want it done right the first time-call us!!" Arnett General Construction 360-477-1935; [WEB.constructiontilepro.com](http://WEB.constructiontilepro.com); CCDONARAG875DL; local references.

**Ludlow Custom Contractors.** Specializes in custom home painting, decks, & finish carpentry. Contractor's License #MOSHECJ994MC. Christopher Mosher, 360-301-9629. "Custom Designing Your Dreams."

**JDG Construction Inc.** 30 years in local business. Free estimates on remodel & new construction, 360-385-3287.

**Do It Right Roofing & Construction.** High quality roofing & construction & remodeling. Owner on every job. General contractor Reg. #DOITRIR943QL. Locally located in Port Ludlow. Excellent local references. 360-774-6348.

**Professional Tile & Grout Cleaning/Sealing.** Clean Grout Northwest, re-grouting, re-caulking. Cleaning & sealing, ceramic, porcelain, natural stone. Licensed, bonded, insured. Lic#GROUTGN905DJ, 360-621-1730. [cleangROUTnw.com](http://cleangROUTnw.com).

**Call Kyle Home Repair:** Handyman & Contractor. Licensed, bonded, insured. Experienced, dependable, professional. Always high-quality. Contact at [kyle@callkylehomerepair.com](mailto:kyle@callkylehomerepair.com) or (360) 389-2007. Lic# CALLKKH77000

**Dave Peterson Tile & Stone.** Kitchen, bathroom and daylight basement remodel. General Contractor. Bonded, insured, Lic# CCDAV-EPPT943DW. 40 years' experience. 360-681-2133

---

## HOME SERVICES

**Legion of Clean.** Jefferson County's #1 Cleaning Service (2021-2025)! Professional, reliable, licensed, bonded, insured & woman-owned. Delivering spotless homes with care and excellence! Call/Text: 360-344-8409 [legionofclean.com](http://legionofclean.com).

**Pristine Clean Gutter and Moss Removal:** Commercial and Residential. Tile, Comp, Cedar and Metal rooftops, Gutter repair, Moss prevention plans. Pressure Washing, Siding and Surfaces, Gutter Guards. Licensed and Insured. Call: 360-990-2679 or 360-440-2238.

**Window Blind Restrings and Repairs.** Most cases same day service. Give James a call @ R&M Services 360-301-2683, Port Ludlow Resident.

**JC's Painting and More.** Painting--drywall repair & finishing--



-carpentry-handyman tasks and more. 20% labor discount, with this ad, interior jobs, Nov-March. Free Estimates 360-550-6101. Lic. # JCSPAPM919DS. [jcspaintingandmore.com](http://jcspaintingandmore.com).

**Experienced house/pet sitter for travelers.** Light hauling and helping hands. Outstanding references. Gary 425-422-9709

**Home Maintenance & House-Sitting:** Painting, electrical, plumbing, roof repair, drywall, light remodel, landscaping, decks, hauling, pressure washing, general labor, house and pet sitting services and more. Call or text. David 360-301-9012.

**Pressure washing is our specialty.** Make it look new again with Eco-Clean pressure washing services! Driveways, patios, decks and more. [www.EcoCleanWA.com](http://www.EcoCleanWA.com) or call us 360-531-4821.

**Overwhelmed? Need help housecleaning?** Call Home Team Housecleaning 360-860-2774 [sheryllara@hotmail.com](mailto:sheryllara@hotmail.com). We've been a team since 2016: committed, punctual, honest, friendly and skilled. Excellent references.

**QuilClean, LLC** House Cleaning Service. Licensed, bonded, insured. Serving Port Ludlow to Quilcene. Call Bonnie 360-302-0379 or visit [www.quilclean.com](http://www.quilclean.com).

**Backflow Testing and Repair:** \$67.50 per test and results submitted to OWSI. Call Dionne Showers 360-271-7393, Greg Showers 360-908-7514 or visit [BackflowAssemblySolutions.com](http://BackflowAssemblySolutions.com)

**In home pet nanny.** Buzzy Donahue 360-531-2605 [buzzydonahue@yahoo.com](mailto:buzzydonahue@yahoo.com).

#### LANDSCAPE & YARD SERVICES

**Brett's Stump Grinding.** Goodbye ugly tree stumps! I'm professional, reliable, & reasonably priced. For info & to see before & after photos, go to [bretts-stumpgrinding.com](http://bretts-stumpgrinding.com) or call Brett Aniballi at 360-774-1226.

**Field's Tree Care LLC** is a Certified Arborist here to help you with all your tree & shrub needs. Fine Pruning. Free Estimates. Licensed, bonded, insured. Lic. # FIELDTC876DH. Dan Field 360-994-0166.

**Irrigation repair, maintenance, and automatic flower bed systems.** Seasonal start up and shut down. Call Wayne 360-643-3114. Email [waynegrassman@aol.com](mailto:waynegrassman@aol.com).

**Green Sun Landscaping:** Call today for your free estimate, retaining walls, sprinkler systems, patios, garden clean ups and more... your satisfaction our priority (360-620-3156)

#### LEGAL SERVICES

**Secretarial Services.** Call Cammy Brown, Peninsula Legal Secretarial Services, LLC, 360-301-2590, [cammybrown.com](http://cammybrown.com), for all your business and legal secretarial needs. Transcription, preparation of legal and business documents, typing projects, etc. I now have a second office inside the Post Office in Port Ludlow. Same phone, etc. By appointment only.

**Notary Public:** For Notary Public services call Cammy Brown, Peninsula Legal Secretarial Services LLC, 360-301-2590, located in Kivley Center, Port Hadlock and the Post Office in Port Ludlow, by appointment only.

#### MISCELLANEOUS

**Rare Earth Music Studio.** Lessons in Guitar, Piano, Voice, Ukulele, Mandolin, Composition, Music Theory. Serving Port Ludlow, Chima-cum, Port Hadlock-Irondale, Port Townsend. Contact [RareEarthMusicStudio.com/contact/](http://RareEarthMusicStudio.com/contact/)

**Hula with Maluhia.** Dance into the aloha spirit through hula, Hawaiian culture, and connection! Classes in Port Hadlock Monday evenings, women 18+ Info [maluhiaokalani@gmail.com](mailto:maluhiaokalani@gmail.com) (425)280-6014

#### RV/BOATING/TRAVEL

**RV Storage.** South Bay, 1 mile west of Hood Canal Bridge on Hwy. 104. Call Shirley, 360-437-9298.

#### Financial Disclosure

The *Port Ludlow Voice* is a 501(c)(4) organization. Its entire staff consists of unpaid volunteers. All writing and editing is done in the homes of staff members on their personal computers. The production editor formats each issue and provides an electronic copy to the printer. The *Voice* is delivered at no cost to readers on all U.S. Post Office carrier routes in the Master Planned Resort (MPR).

Financial support for publishing the *Voice* each month comes from advertising, subscriptions and contributions primarily from community organizations. Average monthly income is:

1. Ludlow Maintenance Commission (LMC).....	\$300
2. South Bay Community Association (SBCA).....	\$300
3. Port Ludlow Village Council (PLVC).....	\$200
4. Display Advertising .....	\$6,050
5. Classified Advertising .....	\$1,287
6. Subscriptions.....	\$49
7. Web Advertising.....	\$108

**Subscriptions:** Per year \$42; \$3.50 per month. Gift issue, \$5

**This issue proofread by:** Gary Hammond, Liz Wise, Karen Hashagen, Paula Berman, Dana Steward and Dave Cunningham.

©2025 **Port Ludlow Voice.** All rights reserved. Printed in the U.S.A. No part of this publication may be reproduced in any form without express written permission of the *Port Ludlow Voice*.

**Paper Content:** The *Voice* uses stock that is acid free and meets the sourcing requirements of the Sustainable Forest Initiative.

The printing of an article, or of classified or display advertising, does not necessarily constitute endorsement by the *Voice*.



Located in Port Ludlow with a Satellite Office in Seattle  
Serving Jefferson, Clallam, Kitsap, Pierce, King & Snohomish  
Counties



**Amanda Wilson**  
Attorney at Law



**Hunter Chapa**  
Associate Attorney

Estate Planning: Trusts & Wills  
Probate & Trust Administration  
Medicaid Planning, Elder Law  
Guardianships, Estate Disputes,  
Powers of Attorney, Health Care Directives  
Community & Separate Property Agreements  
Minors Trusts, Special Needs Trusts, Pet Trusts  
A/B Tax Shelter Trusts  
Tax Planning & Wealth Preservation

Contact Us for a Complimentary Estate Planning  
Consultation [www.NWEPP.com](http://www.NWEPP.com) or 360-437-4172

©2021

## The Year 2025 in Review

122 Residential Properties Sold  
in Port Ludlow

Average Sales Price - \$687,625

6.0% increase over 2024

Average Sales Price was 98% of List Price

Average Days on the Market - 54

Source: NWMLS



**Becky  
Belding**



**Bill  
Barnet**



**Sarah  
Perkins**

  
**Windermere**  
REAL ESTATE  
PORT LUDLOW

360 797-9344 9483 Oak Bay Rd  
[WindermerePtLudlow.com](http://WindermerePtLudlow.com)

## You're in Good Company

With local decision makers and leaders  
from right here in your community



**Darrell Jenkins**  
VP Community and  
Business Banking Officer  
[Darrell.Jenkins@fsbwa.com](mailto:Darrell.Jenkins@fsbwa.com)  
(360) 406-5396

**ASK US ABOUT:**  
Business Checking  
Business Loans  
Sweep Accounts  
Nonprofit Lending  
SBA Loans



**Wendy Duede**  
SVP Market Sales and  
Support Manager  
[Wendy.Deude@fsbwa.com](mailto:Wendy.Deude@fsbwa.com)  
(360) 537-1577

**1ST SECURITY BANK**

[FSBWA.COM](http://FSBWA.COM) 

## Grace Christian Center

*Solid, Spirit-Filled Bible Teaching*

Grace Christian Center is celebrating its 23rd year of serving our Lord Jesus here in the Olympic Peninsula. Planted in Port Ludlow, Grace Christian Center is a regional church, with people traveling from all over the County to worship with us. The Bible is our text book—we work hard to bring relevant teaching with an understanding of history, context, and current application in our very real and daily lives.

Grace Christian Center: Where we love Jesus first and foremost; where we love His Word and His presence; where we love His people, where your family can be a family in the presence of the Lord.

**We invite you to worship with us Sunday mornings at 10.**

Pastors Kevin and Sherri Hunter  
Senior Pastors

360-821-9680

360-821-9684

Port Ludlow Conference Center • 200 Olympia Place, Port Ludlow  
[www.gracechristiancenter.us](http://www.gracechristiancenter.us)

*Loving Jesus and Loving Each Other*



# Learn to Love a Heart Healthy Diet

WITH CLINICAL DIETITIAN ANGELEE BROWN



Jefferson  
Healthcare

**JOIN US!** Get practical guidance on creating a heart-healthy eating plan that reduces your risk of cardiovascular disease. Find details at [jeffersonhealthcare.org](http://jeffersonhealthcare.org).



**February 17, 1:00 pm**



**Bay Club, Port Ludlow**