

Port Ludlow Voice

Serving the Village of Port Ludlow Since 1998

January 2026

plvoice.org

20 YEARS
GUIDING YOU HOME.

RE/MAX First, Inc.
Nikki Casal
(360) 301-3384
WWW.MYAGENTNIKKI.NET



Port Ludlow's Real Estate Resource - I am the  key to your move.

 **Printery®**
YES, WE CAN DO IT!

Creative Design Services, Digital & Offset Printing, Direct Mail Service, Indoor & Outdoor Signage, Custom Apparel Printing

360.385.1256 • www.printery.com • info@printery.com

Winter Special
4-Month Certificate of Deposit


SOUND
COMMUNITY BANK
Simply better here.

Predictable Growth. Guaranteed Returns.

That's the power of a CD.



 Deposit Rates
soundcb.com/rates

 Member FDIC soundcb.com | 800.458.5585



SEA MARINE
FULL SERVICE BOATYARD

FULL SERVICE BOATYARD
ABYC Master Technicians • Haul Out Lift
Canvas Shop • Full Joinery Shop
Electrical Repower • Plumbing • Painting
Winter Storage • Provisions

SYSTEMS SHOW ROOM & SERVICE CENTER
GPS Navigation • Beta Engines • Electronics
Water Heaters • Heating Systems • Inverters



BROKERAGE SERVICES
Buying a boat? Selling a boat?
SEA Marine offers full Brokerage Services.
Contact Sandy Bakken for a consultation.
<http://seamarineco.com/yacht-brokerage-listings/>

For all your boating needs!
SEA...the difference.



Sandy Bakken, Broker

Point Hudson, Port Townsend
(360)385-4000 • seamarineco.com

We're Passionate About Education

You're Invited:
Medicare 101 Educational Events

- In-Person and Virtual Options
- Learn the Basics of Medicare
- Make More Informed Decisions

 **KMi** Find the schedule on our website!

Christie Sarosky
Licensed Agent

Kristin Manwaring Insurance

360.385.4400 • kristinmanwaring.com

9526 OAK BAY ROAD, SUITE 100
PORT LUDLOW

SALISH COAST MED
Expertise to Redefine Your Skin

 Wrinkle Relaxers | Dermal Filler | Microneedling |

salishcoastmed.com // book online // text: 206.659.8016



Mission Statement: The mission of the *Port Ludlow Voice* is to inform its readers of events and activities within the Village and in close proximity to the Village. We will print news articles that directly affect our local residents.

Published monthly by an all-volunteer staff.

Send your articles and comments to
editor@plvoice.org

In This Issue

News & Community	4
Features & Stories.....	11
Arts & Entertainment	18
Village News	
Bay Club/South Bay.....	23
Beach Club/North Bay.....	25
Village Council.....	26
Recreation & Sports.....	30
Classified Ads.....	33

Visit The Voice Online

plvoice.org

Community Updates: Find information on the website before the printed magazine is available. See breaking news on the Home Page and the Community News section for information on North Bay, South Bay, and PLVC for early news for the Port Ludlow Community. All links contained in the articles are live.

Expanded Articles: Read complete versions of articles and media appearing online only.

Full Content on the Website: All the content from the magazine is now posted online.

Letters to the Editor: Read comments, criticisms, and suggestions from other readers online.

Advertising Information: Find out how to place classified and display ads in the magazine. Also find out how to place ads on the web version of the *Voice*.

Archived Voice Issues Online: Copies of every issue of the *Voice* beginning in August 1998 and continuing to the present are available on the website at Archive of Issues.

ON THE FRONT COVER:

Photo by Steve Deligan.



Port Ludlow Voice

P.O. Box 65077, Port Ludlow, WA 98365 - *plvoice.org*

Editorial Staff

Copy Editor

Carol Riley, *criley@plvoice.org*

News & Community Editor

Doug Pulling, *newseditor@plvoice.org*

Features & Stories Editor

Evie Maxwell, *features@plvoice.org*

Arts & Entertainment Editor

Pamela Raine, *artsandentertainment@plvoice.org*

Recreation & Sports Editor

Donna Geer, *sports@plvoice.org*

Photo Editors

Jay Syverson & Steve Deligan, *photoeditor@plvoice.org*

Ludlow Maintenance Commission & Beach Club Editor

Carol Riley, *criley@plvoice.org*

South Bay Community Association & Bay Club Editor

Carol Riley, *criley@plvoice.org*

Village Council Editor

editor@plvoice.org

Business Staff

Production Managers

Mary Ronen, *editor@plvoice.org*

Classified Advertising Manager

Tim Resema, *classified@plvoice.org*

Display Advertising Manager

display@plvoice.org

Distribution Manager

Denny Schuch, *dschuch@plvoice.org*

Subscription Manager

Sarah Schuch, *subscription@plvoice.org*

Web Manager

web@plvoice.org

News & Community

From the Editor's Desk

by Carol Riley, Copy Editor

As I write this, I am sitting near a window looking at a stand of trees which fall has rendered naked. I have become so accustomed to seeing a curtain of green that I hardly know what to think about all these grey and brown spotted trunks, gangly limbs, the occasional stubborn leaf, and a clearer view of the landscape.

I also have a clearer view of the future of the *Voice* in its printed form. My plea in the November editorial for volunteers to step forward and rescue the printed version of the magazine hit a nerve – actually, it hit 14 nerves hard enough for those readers to come forward and say, “What can I do to help?”

We had a very productive meeting at the Bay Club and found openings on the volunteer staff that matched talents and interests. Not everyone found a good fit, of course, but it was such a positive, high-energy gathering that we all came away encouraged and enthusiastic. Some of those volunteers are training and working hard on the production of the January issue. Some are easing into the positions, and we are hopeful that they will soon become seasoned proofreaders, copy editors, layout masters, ad managers, advertising superstars and more. Whew!

The print edition of the *Voice* lives another day! Thank you for reading, for listening, for taking action. And if you think you missed the boat, don't be silly! “We have plenty of room at the table,” as Geoff Lang says in his PLVC piece. Just contact us.

January is often a slim issue as people and groups take a breath after the holidays – not this January issue! The *Voice* is packed with articles about activities, meetings, entertainment both near and a little farther away, and even the possibility that the Port Ludlow Farmers Market may make a comeback! There are features that will test your brain and tug at your heart.

So, welcome to 2026. Is this going to be a good year for you? Are you going to be the best you can be? Will you contact with an old friend? Smile at that pesky neighbor? As Gil Skinner always says, “Keep calm and carry on?” I am betting on you, dear reader.

EJFR Measures on February Ballot

East Jefferson Fire Rescue (EJFR) is primarily funded by local property taxes, comprising over 80 percent of revenues. Washington State law caps annual revenue growth at just one percent. However, the cost of providing emergency services is increasing faster due to inflation. This difference creates an inflation gap that cannot be fixed by cutting services.

The 2026 budget committee reviewed over \$1.8 million in requests for replacing aging equipment, maintaining facilities, and training expenses. While EJFR's strategic plan prioritizes supporting the career and volunteer workforce with modern equipment, facilities, and training, the committee chose to postpone some needed expenditures. The approved budget includes a \$1.33 million structural operating deficit, reducing the operating reserve fund to just a few months of operating expenses but keeping a \$1 million emergency reserve intact.

EJFR will be financing two new fire engines and a new ambulance next year; however, the debt service will remain at a healthy and manageable level of 3.6 percent. As part of a responsible financial strategy, EJFR will ask voters in February to reset the levy rates for both Fire and EMS services to close this inflation gap and keep our service levels high. Levy lifts like this are necessary every three to five years to keep up with the rate of inflation while protecting capital accounts to fund urgent facility and equipment needs.

The proposed 2027 Fire Regular Levy rate is \$1.40 per \$1,000 of assessed property value, and the proposed EMS Levy rate is \$0.50 per \$1,000 of assessed property value. This represents a projected annual household increase of \$150 per year for a property with an assessed value of \$600,000, and less for properties valued lower.

These measures will allow EJFR to maintain the high quality of emergency response our community expects by funding the replacement of aging apparatus, supplying specialized medical equipment, investing in quality training, maintaining facilities, and keeping qualified personnel.

For more information, visit ejfr.org.

Jefferson County Library District Rings in a New Year of Programs

Happy New Year from the Jefferson County Library District! As we turn the page into a brand-new chapter, the Library District would like to extend warm wishes to our incredible community. In the spirit of the New Year, let us make resolutions to learn something new, share stories, and foster a sense of togetherness.

We want to take a moment to express our gratitude for your donations to the Library District's *Annual Winter Giving* campaign. Your support means the world to us, and your

generosity has been inspiring! We've extended the campaign through **January 7**, so if you'd still like to give, please visit jclibrary.info/winter-giving. Your kindness keeps mobile services thriving and helps us achieve our goal of feeding minds and fueling dreams.

There's still time to join the *Kids & Teens Winter Read!* Sign up and track your progress at cleoreads.beanstack.com, or pick up a paper tracker at the library. Read through the featured titles for a chance to win a gift card at a local bookstore. The Winter Read runs through **January 18**.

Start the New Year with some self-care. On **Thursday, January 8**, from 10:15 – 11:15 a.m., adults ages 18+ are invited to enjoy a peaceful hour of *Art & Music Meditation*. We'll begin with a short reading, then you can relax and paint while listening to calm music. All supplies are provided – just bring yourself! Please register at jclibrary.info or call the Library District before **January 8**.

Our monthly *LEGO® at the Library* program also meets on **Thursday, January 8**, from 3:30 – 4:30 p.m. Kids ages 7–11 can build creations with friends in a fun, open space. Each month includes creative challenges that build teamwork and problem-solving skills. All are welcome to join in.

Do you want to be better prepared for emergencies? Come to our monthly *Disaster and Emergency Preparedness* program. In January, staff from the Department of Emergency Management (DEM) will show you how to make preparedness a simple New Year's resolution, with small steps you can take each month. They'll also share their *Prepare in a Year* guide. Start the new year with a plan! Join us on **Thursday, January 15**, from 10:30 a.m. to 12:30 p.m. Please visit jclibrary.info to sign up.

The new year brings an exciting new lineup of *Live Online Author Talks*. Political Commentator David Brooks joins us online on **Tuesday, January 13**, from 11 a.m. – noon to discuss his book, *How to Know a Person*. Award-winning

journalist Julia Hotz will join us on **Tuesday, January 20**, from 11 a.m. – noon to chat about *The Connection Cure*.

And finally, on **Wednesday, January 28**, from 4 – 5 p.m., bestselling author Liz Moore will share her newest novel *The God of the Woods*. Visit jclibrary.info to sign up, send questions to the authors, and see more *Live Online Author Talks*.

For complete program details and our calendar of events, please see our website, jclibrary.info. Visit the Jefferson County Library District at 620 Cedar Avenue in Port Hadlock. For questions or assistance, call 360-385-6544 or email information@jclibrary.info.

Port Ludlow Garden Club Presents: Winter Color

It's no secret that winters in the PNW can be a bit gray, and that many of us are longing for more color! Join us as we welcome horticulturist Doug Cockburn to talk about adding more color to our winter gardens.

Doug has been in business in Sequim for fifty years. He started out when he was 13 with a small mowing route for neighbors and family members. He later became a state certified nursery and landscaping professional horticulturist. Many of you are probably familiar with his current business, The New Dungeness Nursery, in Sequim. It's a two-acre traditional nursery that he runs with his son.

In addition to an informative presentation, Doug will be bringing some plants of color for our raffle. He also generously visits customer's yards at no charge to give suggestions and solve problems.

We hope that you can join us for this informative presentation.

The event will be held at the Beach Club in Port Ludlow on **January 14**, at 11:00 a.m. The Garden Club is open to all local residents. Due to limited seating, members and guests must RSVP five days prior to the event. Guests are welcome to attend for a \$5 donation and those without an RSVP will be admitted if seating is available. Refreshments are complimentary. RSVP to portludlowgardenclub@outlook.com.

Jefferson Healthcare Partners with Discovery Physical Therapy

Jefferson Healthcare is excited to announce that Discovery Physical Therapy will be joining Jefferson Healthcare beginning **January 2026** as Jefferson Healthcare Discovery Rehabilitation. The partnership increases provider capacity, helping meet the growing community need for high-quality, patient-centered care close to home.

Discovery Physical Therapy has served the communities of East Jefferson County for 18 years. With this new partnership, Discovery will continue to offer services at their current location in Port Hadlock, expanding access and capacity for rehabilitation and physical therapy services in East Jefferson County.

“This partnership allows us to grow our team of providers and enhance the care we offer, ensuring we continue to meet the evolving needs of our community,” said Jake Davidson, Jefferson Healthcare Chief Operating Officer. “This is a positive and collaborative change that benefits everyone involved.”

Discovery Physical Therapy brings additional expertise and service options that will complement Jefferson Healthcare’s existing rehabilitation programs. These include post-surgical rehabilitation, pregnancy and post-partum services, treatment for sports injuries, vestibular and balance disorders, work injuries, and pelvic physical therapy for people of all genders and ages with bowel and bladder disorders and pelvic pain.

“The Discovery Physical Therapy team is excited about the potential to grow and develop services to better meet the needs of Jefferson County by becoming part of Jefferson Healthcare,” said Amy Irene Lynch, PT, owner of Discovery Physical Therapy. “Discovery Physical Therapy staff will continue serving the community as Jefferson Healthcare Discovery Rehabilitation. The people you know and trust in both organizations are coming together to serve you better.”

Jefferson Healthcare is an award-winning, full-service healthcare organization meeting the care needs of East Jefferson County. Jefferson Healthcare offers inpatient and comprehensive outpatient services including primary and specialty physician care.

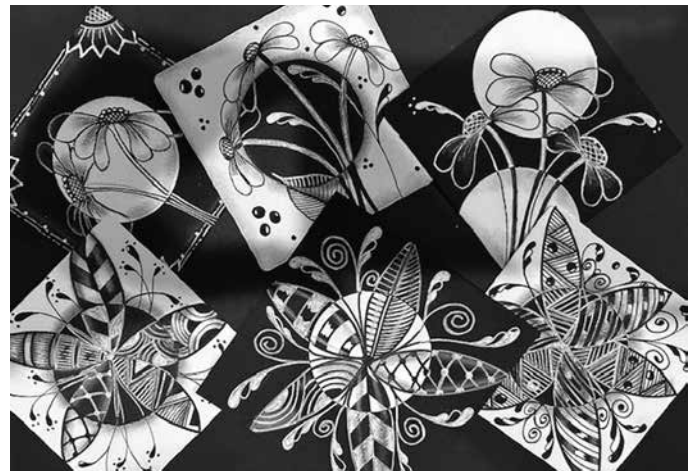
Martha’s Book Group - *Absolution*

Alice McDermott’s ninth novel, *Absolution*, begins with her protagonist preening for an afternoon garden party among the who’s who of the Americans gathered in Saigon, 1963, during the early years of the Vietnam War. McDermott, a National Book Award winner and a Pulitzer Prize finalist,

explores the dynamics of America’s foray into this controversial conflict through the lens of two women a generation apart from each other. Martha’s Book Group has selected this book to commence its 2026 season. Please join us on **Tuesday, January 13, 4 p.m.**, at the Bay Club to share your thoughts on this period and McDermott’s story telling prowess.

Martha’s Book Group meets monthly on the second Tuesday of each month at the Bay Club at 4 p.m. All are welcome to participate. For further information about the group and books to be discussed, please contact Sarah Schuch at bookgroup@plvoice.org. February’s book selection is *The Dictionary of Lost Words* by Pip Williams.

Port Ludlow Tangle Club to Meet January 8



The Port Ludlow Tangle Club will meet on **Thursday, January 8**, at the Bay Club from 1 – 3 p.m. No prior experience with the Zentangle Method is necessary; come observe what this meditative art practice is all about! “Tangling” is easy to learn as there are just five elemental strokes: a dot, a line, a C curve, an S curve, and an “orb” or circle. Repeating these strokes in structured patterns called tangles is a fun, mindful way to de-stress *and* be creative!

Certified Zentangle teacher, Alice Clive, will lead a session entitled “Black on White and White on Black.” Monthly supply kits will be available for a nominal fee; please bring your own glue stick! Five-dollar beginner kits will be available for first timers. To RSVP, contact Alice at foureyes22@outlook.com.

Heads up! Mark your calendars now for February’s “Chat and Tangle” meeting on **February 12**. There will be no formal program, just an opportunity to tangle and socialize.

Meet Your Firefighters

by Ron Dawson, EJFR Community Outreach Volunteer



If you go to the fire station on Oak Bay Road, or call their office, you will probably be engaging with District Secretary, Tanya Cray. Her tenure with Port Ludlow Fire and Rescue began in March of 2008. She is originally from Port Townsend but moved to Port Ludlow to live with her future husband. Tanya holds two degrees, one in Sociology and one in Social Services from Central Washington University. She had extensive experience in business, with a focus on personnel management, before entering the fire service. She feels the most rewarding part of her job is interfacing with the others in the office. The hardest part is listening to the stories of people that have suffered in accidents or fires. The office staff made it easy for her not to take things too seriously when, shortly after she was hired, they made her the victim of an April Fool's joke. She then learned that dealing with the staff would be a whole new experience!

Tanya lives in Quilcene with her husband, Jared, and their dog, Ranger. She has two children and two grandchildren. She enjoys hunting, fishing, and working on their property. She says she is an open book – “what you see is what you get.” She says that taking this job in 2008 was one of the best decisions she has ever made.

Tanya is very helpful, knowledgeable and a delight to work with according to her office staff.

Smoke and Mirrors? You decide...

by Carol Riley, Staff Writer

A recent visit to Sisters' Cider House, 921 Hildebrand Lane, Bainbridge Island, was a treat. Sisters', owned by Port Ludlow residents Roger and Lee Anderson and run by their daughters Randi and Caron, is a fun destination.

The award-winning cider, which comes in so many varieties, is delicious.

I tried the Pomegranate cider and loved it. My husband, who couldn't decide on a flavor, opted for the flight of four ciders of his choice – Black Currant, Pomegranate, Strawbanero, and Rum Away with Me. He loved them all!

Roger guided us through the tasting and shared an interesting fact. He has started a “club” where patrons can opt to purchase their own pewter “glass” for cider tasting. Your name goes on the mug, and it stays at the cider house ready for your next visit. Why pewter you ask? Well, Roger, who is a chemist as well as a cider maker, explained that the pH of the cider doesn't react with the pewter, thus allowing the true flavor of the cider to shine through. Contact with glass, even though the reaction is small, does alter the flavor slightly. Really?

Well, we put it to the test. My Pomegranate cider tasted from my glass was great. But my cider tasted from the pewter mug? Different! Fuller and more well-rounded. Amazing!

Don't take my word for it. Head on over to Bainbridge and taste for yourself.

Discover Your Family History

The Jefferson County Genealogical Society (JCGS) will host classes on Zoom this month to introduce current methodology and resources that will help you explore your family history. The class, “*Getting Started on Your Family History Journey*,” will be conducted by Dianne Duncan, M.Ed. Instructor and JCGS member. This two-part Zoom class will be held on **Tuesday, January 13**, and **Tuesday, January 20**. Both classes run from 11 a.m. – 1 p.m.

To register for the class please complete the Registration Form which can be found on the JCGS web page at <https://wajcgs.org/classes/>. A donation of \$30 for JCGHS members, or \$55 for non-members is suggested. The non-member donation includes a one-year JCHS membership. Instructions for completing the form and how to make donations will be found on the webpage. Payments can be made by check or by PayPal.

The registration deadline for this class is **Friday, January 9**. Invitations containing the link to these Zoom sessions will be sent on **January 9**.

If you have a question about class content or registration, please contact JCGS Education Committee Chair Dora Whittaker at 360-301-0478.

Jefferson County Master Gardener

2026 Yard & Garden Lecture Series

Jefferson County Master Gardeners Foundation's 2026 *Yard & Garden Lecture Series* will be underway soon. All lectures are given in the Erickson Hall at the Jefferson County Fairgrounds and will run on six consecutive **Saturday** mornings from 10 a.m. until noon: **January 10, 17, 24 and 31, and February 7 and 14**. The lectures will feature the following experts in their fields:

Dr. Ross Bayton — director of Heronswood Garden. Ross is the author of several books on horticulture, including *The Gardener's Botanical: An Encyclopedia of Latin Plant Names*, *New Trees: Introductions to Cultivation* (with John Grimshaw), and *Plant Families: A Guide for Gardeners and Botanists* (with Simon Maugham). He holds a doctorate from the Royal Botanic Gardens where he studied the classification of tropical palms. Ross will give a lecture on **January 10**: "*Gardening on a Warming Planet: Insights from Heronswood*."

Marni Sorin — garden educator at Tilth Alliance, caregiver for the Good Shepherd Center Learning Garden (along with volunteers), and small-scale organic gardener. Marni holds a master's degree in Curriculum & Instruction from the University of Washington, and a Certificate in Education for Environment and Community from IslandWood. Marni's lecture on **January 17** will be "*Growing Practices for a Resilient Edible Garden*."

Dr. Kathleen Wolf — University of Washington research social scientist studying interactions between human and ecological systems, writer, and a key collaborator with the U.S. Forest Service Pacific NW Research Station on urban forestry studies. Kathleen holds a doctorate in Landscape Architecture and a master's in Landscape Architecture, both from the University of Michigan. Kathleen's lecture on **January 24** will be "*Rooted in Research: How Urban Forests Sustain Us*."

Lisa Taylor — educator, consultant, contributing author of the *Maritime Northwest Garden Guide, 2nd ed.*, and *Your Farm in the City: An Urban Dweller's Guide to Growing Food and Raising Animals*. Lisa is a Master Composter, a pioneer in children's gardening, and has been teaching people of all ages to garden organically for 30 years. Lisa's lecture on **January 31** will be "*Designing for Drought: Waterwise Designs with Native Plants*."

Dr. Steve Hampton — avid birder, writer, Conservation Chair and Christmas Bird Count Compiler for Rainshadow Bird Alliance, an enrolled citizen of Cherokee Nation, and a former resource economist for the California

Department of Fish & Game. Steve holds a doctorate in resource economics. Steve's presentation on **February 7** will be "Backyard Sanctuaries: Gardening for Birds and Biodiversity."

Jenny Glass — plant diagnostician for the WSU-Puyallup Plant and Insect Diagnostic Laboratory, and instructor. In addition to diagnosing plant problems on Pacific Northwest crops and ornamentals, she also teaches plant pathology, diagnosis, and integrated pest management to Master Gardeners and other audiences in western Washington. Jenny holds a master's degree in botany and plant pathology from Oregon State University. Jenny's lecture on **February 14** will be "*Working with Nature: Smarter, Safer Pest Management*." Master Gardener plant clinicians will also be on hand to answer gardening questions. Jefferson County Master Gardener Foundation Chair Harry Hayward says, "This year's *Yard & Garden Lecture Series* has something for everyone: landscaping and gardening insights, connecting with our forests, water conservation, birding, and pest management."

Each lecture will run from 10 a.m.–noon. Lectures will last about 90 minutes with a 15-minute break at the half. Each event will be followed by audience Q and A. The price for the entire six-lecture series is \$75 (plus tax); single-event tickets are available for \$15 (plus tax). "Day-of" tickets, purchased in person, are \$20 (tax included). Tickets may be purchased from 2026YardAndGarden.eventbrite.com.

Ticket sales help support Jefferson County Master Gardener programs. For more information, visit jcmgf.org. The event is cosponsored by Washington State University's Jefferson County Extension Service. Sponsors include Quimper Mercantile, Scott Rogers, John L. Scott Real Estate, and Valley Nursery.



JEFFERSON COUNTY
MASTER GARDENER
FOUNDATION

First Wednesday Luncheon

by Stephanie Buehler, Guest Writer

Ready to let your hair down, relax and have some fun after the flurry of the holidays? Come join us at the First Wednesday Luncheon on **January 7** from 11 a.m. to 1 p.m. at the Beach Club. We'll be playing a fun game with prizes while making generous donations to the Food Bank. Please bring your own lunch. Cookies, coffee and tea will be provided. Send your RSVP for this luncheon to first-wednesdayluncheon@gmail.com or sign up at the Beach or Bay Club by **January 4**.

For February, we'll be entertained by members of the West Sound Men's Chorus who became a favorite last year and will be singing several a cappella tunes in 4-part harmony, to ready us for Valentine's Day. This luncheon will be held on **Wednesday, February 4**, at the Bay Club and please bring your own lunch. Cookies, coffee and tea will be provided. As a courtesy to the Club staff and our volunteers, please RSVP as soon as possible and no later than **February 1** per either of the options above.

There is no charge to attend our luncheons. However, we ask that you bring a donation in the form of cash, check made payable to the Jefferson County Food Bank Association (JCFBA), and/or non-perishable food such as condiments, coffee, peanut butter, jelly, canned meat, boxed pasta, etc., or hygiene products. Food donations must be unopened, undamaged and unexpired.

Be sure to mark your calendar for the **Wednesday, March 4**, luncheon, too. Volunteers will provide a buffet of homemade soups while we have all our questions about Recycling answered by our guest speaker.

Wills And Trusts: What Is Right for You and Your Family

Amanda Wilson, locally based Estate Planning Attorney with Northwest Estate Planning & Probate PS, will present this free seminar and answer questions as time will allow.

The seminar will be held at the Bay Club, 120 Spinnaker Place, on **Wednesday, January 14**, from 1 – 2 p.m.

Walk-ins welcome but RSVP appreciated at (360)437-4172 or info@nwpepp.com

Center Valley Animal Rescue to Speak at Dine and Discover

by Allan and Nancy Kiesler, Guest Writers



Center Valley Animal Rescue (CVAR), founded in 2002 by Sara Penhallegon, is a licensed wildlife rehabilitator. Located near Quilcene, CVAR's mission is to provide "safe harbor and rehabilitation for unwanted,

injured or abandoned domesticated and wild animals." It places adoptable animals in loving homes, providing lifelong sanctuary to domestic animals not suitable for adoption. CVAR also works to rehabilitate and release injured wild animals. Additionally, it offers low income spay-neuter services and responds with law enforcement to domestic abuse situations. CVAR partners with many other rescue organizations to carry out amazing things. On **Monday, February 2**, at 5:30 p.m., Sara will join us to talk about these accomplishments and share CVAR's future plans.

CVAR's presentation will be held at the Beach Club, but sign-up sheets will be available at the front desks of both the Beach and the Bay Club. If you are interested, please sign-up by **January 9**.

This event is open to North and South Bay members and their guests. If you bring an appetizer, please be sure it is large enough to serve 8-10 people and can easily be served by our volunteers (please avoid dips). Some of us have dietary issues, so please put a note on your dish if it contains any of the following allergens: wheat, soy, eggs, milk, tree nuts, peanuts, fish, or shellfish. Bring your place setting (plates, napkins, eating utensils, glasses), placemats, if desired, and a plastic bag to carry your dirty dishes home. We provide coffee/tea/water but if you would prefer something else to drink, you're welcome to bring your beverage of choice.

Admission is \$5 per person, payable at the door, which covers the cost of the facility, coffee/tea, banquet permit, and the honorarium we provide to the speaker. If you sign up but are unable to attend, please let us know as no-shows can significantly affect the food selection. Questions or suggestions? Call us at 360-437-8091. We look forward to seeing you there. We encourage everyone to bring a friend who has yet to experience Dine and Discover.

Chimacum School Board Receives State's Highest Honor



In a proud moment for the Chimacum School District, it received a major honor: the 2025 Washington State School Directors' Association (WSSDA) State Board of the Year for small districts. This award recognizes school boards that demonstrate exceptional leadership, strong alignment to student-centered goals, and significant progress in improving educational equity and outcomes for all learners.

Chimacum's Board was selected this year for its clear vision and its steadfast commitment to the district's Purpose – to be a caring community for courageous learners – and its Promise that every student is known by name, strength, and need. These guiding principles anchor the district's strategic plan and shape every decision the Board makes.

Board Chair Dr. Roxanne Hudson emphasized that the recognition reflects the efforts of the entire Chimacum community – teachers, staff, students, families, and partners who work together each day to create a welcoming and effective learning environment. The Board's leadership has contributed to improvements in kindergarten readiness, reduced discipline rates, and expanded inclusion for students with disabilities. These are clear signs of a district moving forward with purpose and collaboration.

Superintendent Dr. Scott Mauk noted that small rural districts face ongoing challenges, from tight budgets to staffing shortages, yet Chimacum continues to make measurable progress by staying focused on what matters most: student success, engagement, and well-being.

This statewide recognition is a celebration of teamwork, community spirit, and the shared belief that when people come together on behalf of children, extraordinary things can happen.

Recycling Reform

We can do this, Port Ludlow –

Rethink, Reduce, Reuse, Repurpose, RECYCLE

Finally, some encouraging news regarding **recycling!** It has been a confusing journey for many home and business recyclers, especially those from cities where recycling programs are easy to access due to proximity to repurposing plants. The remoteness of Jefferson County puts its residents at a disadvantage. But some relief is in the not-too-distant future, thanks to the work of the Washington State Legislature and a tireless group of advocates.

The WA state producer responsibility bill, known as the *Recycling Reform Act*, created an Extended Producer Responsibility (EPR) system for packaging and paper products. Signed into law in May 2025, it shifts the financial and operational responsibility for recycling to the producers of these materials, aiming to fund statewide recycling services, improve recycling rates, and ensure more materials are recycled. Producers must join or form a Producer Responsibility Organization (PRO) by **July 1, 2026**, to manage these programs, with the goal of having the PROs finance at least 90% of recycling costs by 2030.

With producers shouldering responsibility for recycling of packaging (cardboard, paper, plastic, metal or glass), the cost to consumers for recycling should be greatly reduced. This, of course, will not be in time to delay the upcoming changes in Jefferson County recycling set to begin on **April 1**. However, with producers working together to collect, transport, and repurpose packaging of all types, residents should find more options for moving recyclables from home to recycling centers. Ease of disposal for recyclable goods will decrease the amount of refuse landing in the Jefferson County transfer station where it then must be transported to southeast Washington. The cost of transporting Jefferson County's refuse from home to final landfill location (300 miles!) is staggering.

Everything residents put in their trash cans must travel first to the landfill, then a distance greater than driving from Seattle to Eugene, OR – **everything!** Thus, the need for making recycling convenient, affordable, and desirable.

While producers build their recycling streams, Jefferson County will begin a curbside program and eliminate the community bins that have had mounting obstacles. More specifics regarding the new program will be available soon and will be summarized in the **February Voice** issue.

We can do this, Port Ludlow.

Features & Stories

TIME - Our Most Valuable Treasure

It is now January and a new year! January marks the start of a new cycle of moments, days, weeks, months, and seasons. A time for new beginnings, new goals, new hopes – a time “to start over,” looking and moving forward with new excitement and new energy.

As we begin the new year, let’s examine time – what it is and what it means in our lives. We track time in units of seconds, minutes, hours, days, months, years, decades, centuries, and millennia.

We use time to manage our lives. We sleep and wake in allotments of time. We eat our meals, see our family and friends, make appointments, work, relax, and travel in allotments of time. Time seems simple; time seems natural.

We think of time as having three components – past, present, future. We remember the past; we live in the present; we anticipate the future. We also understand the cyclical nature of time. That is why we consider the New Year as a new beginning, a reset of our goals, intentions, and actions.

Time is very difficult to understand using science and mathematics. Even to clearly understand how the international standard of time, the second, is measured using the frequency of the cesium atom requires an in-depth understanding of mathematics and atomic physics.

In science, there are different definitions of time. In one, time is defined by mathematical equations, and time is a quantity or parameter, referred to as “coordinate” time. A second definition of time comes from Einstein’s theories of relativity, where it is a dimension in addition to the three dimensions of space we’re familiar with. It’s a direction in four-dimensional spacetime.

These two notions of time – the quantum mechanical idea, in which time is a mere parameter, versus the relativistic idea that time is a dimension in spacetime are difficult for scientists to reconcile. Combining quantum mechanics and general relativity does not address one key question: Why does time only seem to flow in one direction? With a third definition, time is neither a parameter in equations nor a dimension in spacetime, but a direction – pointing from the past to the future. (The definitions above are summaries from *BBC Science Focus Magazine*, by Jim al Khalili, December 7, 2025.)

Even the greatest minds can’t yet agree with the role of time in the universe. In a February 2024 podcast for *Quanta Magazine*, Steven Strogatz, distinguished professor in the Department of Mathematics, Cornell University, stated: “All of us are aware of the passing of time. We’ve felt it in the changing of the seasons, the rhythms of song and dance, our kids growing up and getting older. Like it or not, time is a fundamental part of life. And over the millennia, scientists have generally regarded time as a one-dimensional thing, an arrow that keeps moving forward, never backward. But the closer we look at time, the more complicated and mysterious it gets. Scientists today are divided over whether time, or our experience of it at least, is real or illusory. Perhaps we’re not really moving through time. Perhaps the present, past and future are all equally real.”

Regardless of the complexities of understanding the nature of time through science and mathematics, the world conducts its business based on easy-to-understand measurements of time with watches, clocks, calendars, and schedules. We manage our lives the same way. For us, “time marches on” in the repetition of night and day, of the weeks that go by and come again, and the months passing and then coming again as a new year begins. We realize the concept of past, present, and future. As one year ends and becomes the past, the new year welcomes in the present and the future. Thus, we are given, once again, a time “to start over” with renewed hope, trust, and perhaps a commitment to ourselves to live each day and month to our fullest potential.

By a “certain” age, most of us understand that time is a gift. Time is the gift that allows us to live life with purpose. We understand this, but don’t always treat time as a magnificent, treasured gift. We forget that this gift has a limit that is best not squandered. January offers a reminder to us. Let us each use our remaining allotted time with respect, kindness, and purpose for ourselves, our families and loved ones, our friends, our communities, our country, our Earth, and our universe.

plvoice.org

Breaking News – Archive of Past Issues
Early Access to News Articles
Local Arts – Letters to the Editor

Porch Talk with Jim Mueller

by Donna Geer, Staff Writer



Jim Mueller.

Submitted photo

Not everyone I know admits to liking a good old “fart” card. Laughing at jokes with friends or sending the family funny birthday cards filled with pictures of monkeys or references to flatulence – it’s all good fun. Jim Mueller likes the goofy stuff. He even calls his fearless dog a *chihuahuasaurus*, conjuring up all sorts of imagery.

Jim’s been married to Sandy for 40 years. They met in Ballard in 1980 when he was at a music venue. When he retired from Boeing ten years ago, they decided to leave Burien. They looked at a lot of different locations, some as far away as Hawaii, but their daughter lives on Orcas Island, so Sandy suggested they look for something closer to home. She’d been to a retreat at a condo in Port Ludlow years earlier, and she remembered how beautiful it was. Jim didn’t need a lot of convincing. They moved to North Bay and Jim says they couldn’t have ended up in a better place. He likes being surrounded with like-minded people, who want the same things for the community that he does, and trees.

Jim really loves the outdoors. He grew up in Camas, WA, a small town on the Columbia River. Like a lot of kids back then, he and the neighborhood gang would be off on their bikes most days every summer, catching crawdads with friends in the Washougal River. As a teen, he was still hanging out at the river by the Camas paper mill. Most of

his family’s vacations were spent camping in the woods in Washington, Oregon and California. Maybe that’s why he’s drawn to the Port Ludlow trails.

After high school, he joined the Coast Guard for four years as an electronics technician. It was a great steppingstone to leave home and do “jackass stunts away from the neighbors.” Though he claims he looked like he was twelve years old when he was in the service, he said he learned a lot about life.

Jim worked for Boeing for 35 years as a designer in the flight systems lab where he built lab equipment and test systems. He worked on the flight deck simulators for the Boeing 777 twin-aisle jet and even built the first control panel facsimile for the folding wingtips on the 777X. When I asked what he missed the most about his job, he talked about being part of a creative team that was doing state of the art technology.

That’s partly why he joined the PSO Bluebills (Peninsula Support Organization Bluebills). It was once affiliated with Boeing, but now it’s a 501(c)3 non-profit. Anyone who’s willing to lend a hand is welcome to join. The group provides all kinds of fall prevention services for people in Jefferson and Kitsap counties. Jim’s teamed up with other Bluebills to build wheelchair ramps and railings for people in need. Since 2016, he’s been the editor for their newsletter. He’s also created the graphics for the posters, signs, and banners for the annual Dove House Golf Tournament that’s held every August at the Port Ludlow Golf Course.

Jim just likes making stuff. Just about anything, really. Designing graphics for signs and newsletters, building furniture in his garage. He says he’s not a ‘fancy finisher’ when it comes to woodworking, but if you’ve hiked on Port Ludlow trails, you might have sat on one of his creations.

He’s designed and built 23 wooden benches. The first three were made of free scraps from a home construction site down the street from his home. Two of those benches are still on the Osprey Trail. The new Creekview Loop Trail, which connects to the Interpretative Trail, boasts the only legacy old growth Douglas fir in Port Ludlow, plus six of Jim’s newly built benches.

In addition to being on the Trails Committee, he’s also a member of the Greenbelt Committee. That group’s been working on wildfire fuel reduction from the common areas around evacuation routes. Volunteers pull out brush and trim the lower limbs of the trees during two-hour sessions on Tuesdays and Saturdays. They’re always looking for more volunteers.

He tells me he feels good when he's volunteering, that he gets back much more than he gives. It's given him purpose, filled his life up with meaning. Anytime he's working on the Port Ludlow trails, and his muscles start grousing, all he has to do is look at the volunteers working next to him and he's inspired to keep going.

Sometimes he wishes he'd seen more of the world when he was younger, but traveling's lost its luster now. Besides, he really likes it here in Port Ludlow. Every day, he looks forward to the sun coming up so he can get out on the trails and listen to the birds. It's another opportunity to walk his chihuahuasaurus and hunt for mushrooms. Where else do you get to do that outside your front door?

You can find these and other stories online at *plvoice.org*. As you already know, our little town is an eclectic mix of wonderful and interesting people. Some were born here and many more come from elsewhere, but all of us have chosen to make Port Ludlow our home. Every one of us has a great story, so let's sit on the porch and have a conversation. We can share a cup of coffee, or tea, if preferred. You can reach me at *sports@plvoice.org*. Looking forward to hearing from you!

A Farmer's Market Reborn?

by Evie Maxwell, Staff Writer

There used to be – some say 10, others 20 years ago – a farmer's market set right here in Port Ludlow. By all accounts it was a vibrant part of community life from spring through autumn, offering fresh fruit, fish, vegetables, all local farm-to-table offerings that help make our part of Jefferson County, WA, such a delightful place to live.

This market lasted for many years, until a change in venue put a kibosh on the endeavor, and it, alas, went the way of the Dodo bird. But, unlike said bird, this one is eyeing a revival.

The possibility of revival is coming to us thanks to the efforts of a relatively new Port Ludlow resident. Kandice Crusat moved here with her husband, Rodney, just over a year ago. Having come from a place with a vital farmer's market, she quickly came to the decision that Port Ludlow should have such a market too.

That's by no means saying that this corner of Jefferson County doesn't have magnificent farmers' markets. As most of you will know, we have three: Two in Port Townsend held on Saturdays and Wednesdays, plus a

Sunday market in Chimacum. All three exist under the aegis of the Jefferson County Farmers Market organization. So why isn't this enough?

Because, Crusat says, "We have around 3,000 people living here with no close-by access to local food." Sure, the existing markets are wonderful; but Crusat points out, they're not easily accessible for many older residents or those without cars.

Therefore, she went to work. Up to this point, that effort might sound a bit pie-in-the-skyish, but Crusat has made some significant progress.

For starters, she's looking at two potential sites for the market: the open area between the recycling stations and the cluster of local Port Ludlow businesses (restaurants, gas station, and other existing businesses) plus the area around the Marina. To date, Crusat has focused mainly on the open space area, pointing out that it offers a good amount of available parking, all the advantages of adjacent local businesses, and – drum roll please – a no-cost deal for use of the space.

That latter is thanks to the Port Ludlow Associates, who clearly see value in the idea. In return for the free space, Crusat plans to offer interested vendors a place at the market for free. That could prove a significant draw as the existing very successful, and very well run, Port Townsend and Chimicum markets, do need to charge for space.

Overall, the idea of 'free' space has helped Crusat gain interest from several local food producers. In fact, she notes, she currently has a 99% "for-sure" buy-in from a local vendor who runs two organic farms, multiple green houses, plus a fishing operation. In addition, she's had interest from smaller farmers, flower growers, fishery operations, dairies, and the like. Crusat is also interested in opening the market to ancillary vendors such as artists, craftspeople, and sellers of vintage wares.

Of course, even with rent-free space, the proposed market would require some funding for costs such as signage, advertising, clean up, and the like. But, Crusat says, "We'll do everything we can to keep the costs as low as possible."

So ... will we be seeing a Port Ludlow farmers' market sometime in 2026? Stay tuned and we'll do our best to keep you informed.

It is a Small, Small World

by Milt Lum, Staff Writer

It's A Small World, the Disney boat ride through a dark tunnel, had its inaugural debut at the New York World's Fair in 1964. It continues to be one of the most popular rides throughout Disney theme parks globally, entertaining three generations of children and adults with its catchy theme song. The song and the joyful, singing, animated children espouse a world which truly belongs in Fantasy Land where this ride is situated. While some would refute the reality of "a small world," my travels have taught me that we are, in fact, all members of the same family, with fears and hopes and desires so similar that the 'small world' feels very close.

As a member of an immigrant group who has succeeded in achieving a fulfilled life within a democracy, I am astounded at the current demonization of members of the global family by a democratic nation which was built by immigrants. Rick Steves, Edmonds-based travel writer and tour operator, stated in a recent interview: "We are a frightened society, and the most frightened people are the people with no passports, whose worldview is shaped by fear mongering by commercial TV news." As a dedicated world traveler, I would agree in part that traveling to places requiring a passport does provide one with a changed perspective of the world and of one's own self.

The common thread throughout all of my travels is that we share a common humanity. No matter we speak different languages, eat foods unfamiliar to our palates, have varying shades of melanin under our skin, and have different nuances in our expressions, we all understand a smile and a bewildered look. We have managed to get lost on every trip abroad and were shown the way by complete strangers who spoke little or no English. No matter how many times we were ignored or politely dismissed, a pathfinder found us. On a recent trip to Japan, even with the aid of Google, we could not locate the bus stop for a particular shuttle. We were relieved to hear these words from a stranger who asked in unaccented American English, "Do you need help?"

Finding one's self outside of one's comfort zone is a way of discovering this common humanity. Visiting Turkey in the aftermath of 9-11, the tour group we traveled with made it a point that, beyond seeing points of interest, we were provided opportunities to interact with people by: going to a Turkish elementary school sponsored by

the group, having lunch at the home of a Turkish family, spending the night at a home of another Turkish family, and spending four nights on a sailing ship with a Turkish crew. From the interactions facilitated by our guide, we were able to discuss shared values and aspirations about our families and children. We discovered the secret to the Mediterranean diet consisted of fresh foods and olive oils. We saw that the women were valued and an integral part of the family unit. We left with a greater understanding of their culture and realized that the actions of a radicalized few was not a reflection of all Islamic nations.

Dealing with an unexpected event in a foreign country can be both challenging and enriching. We have visited two police stations and an emergency room while abroad. Each occasion, while unnerving, resulted in an appreciation of how we were aided by the locals in coming to a successful resolution. The police station visits were in Spain and Japan. We were victimized by an elaborate scheme in Spain which resulted in having the tire on our rental vehicle slashed within a mile of the car rental place. While we were distracted, the thief absconded with our carry-on bags which were in the back seat of the vehicle.

Fortunately, we had our money and passports on us. We successfully filed a report with the police in one city and were aided in finding the police station in another city to retrieve the report which allowed us to successfully file for the lost items with our insurance company. The inconveniences of losing travel directions, a favorite travel pillow, laptop and camera gear were offset by the patience of the police and people along the way who helped us get to our destination.

Going to an emergency room while abroad makes one appreciative of the universal language of caring. My wife sustained a period of heart rhythm disturbance which was quelled by medication. She was well enough the next morning to walk to the ferry, which was to take us to our next destination, an island in the Adriatic Sea. We were already at sea when she became pale and weak, too weak to disembark. We notified the chief steward and, upon arrival, a physician and an ambulance driver came aboard and took her to the clinic. I was assigned to take our luggage and meet her there. A taxi was waiting for me. The physician and nurse who both spoke and understood English had properly assessed the cause for her weakness and had her sitting up and feeling much better by the time I arrived. They observed her for several hours while I waited at her bedside. The emergency room was similar

in equipment and emergency protocols to many of the emergency rooms where I had worked. The physician was thorough and knowledgeable as we conversed about my wife's condition. I commented that we were fortunate to have been treated so promptly. She said in their system of medical care everyone has their own physician and only people with true emergencies come here. We paid with our credit card and received the full report of the treatment and itemized expenses. Our travel insurance company reimbursed us later for that visit which totaled \$260.

The visit to the police station in Japan was because I lost my credit and debit cards while in Tokyo, and we were there in hopes that it had been turned in. No luck. We had prepaid for most of this trip arranged by a travel agency so continued our way. Already behind on our tightly scheduled trip, we decided to skip the first stop on our itinerary, a visit to Kamakura to see the *daibutsu*, the great Buddha.

Fast forward two years later, and I returned to Japan alone to explore flying Space A using the Air Force's Patriot Express from Sea-Tac. I wanted to see *daibutsu* and traveled to Kamakura. Online I had learned about Kanagawa Systematized Goodwill Guide Club (KSGG) and made arrangements to have a guide for my next day visit to Kamakura. I was told that the usual protocol was to provide a two-week notice, but there was an individual free and willing to show me Daibutsu. I met Takako Konno, my guide for the day, who was a retired English teacher. We have remained in touch through email, sharing our experiences about how our countries were dealing with the pandemic. We reunited on my subsequent visits to Japan, and our families have become fast friends.

Traveling the world has made me realize that people are people everywhere. We want to be safe and secure, have enough to eat, share our cultures and cuisines and be able to laugh together. It has also made me aware that all countries are dealing with problems associated with wealth disparity, growing populations, dwindling resources, global warming and a global economy. Some have developed solutions to problems which plague our nation, and we have resources which could assist many developing nations. We need each other more than we need to demonize each other. It is a small world after all.

2025 Statistics for East Jefferson Fire Rescue

Effective 01/01/2023 Port Ludlow Fire & Rescue merged with East Jefferson Fire Rescue. Our monthly statistics will now include information for the entire Fire District.

Communities served include: Port Townsend, Cape George, Kala Point, Marrowstone Is., Port Hadlock, Chimacum, Irondale, Port Ludlow MPR (North and South Bay), Paradise Bay, Beaver Valley, Bridgehaven, Mats Mats, Shine, South Point and other areas located within our boundaries.

November Alarms

Fires.....	5
Rescue/Emergency Medical	295
Good Intent	30
Hazardous Conditions	3
False Alarms	14
Service Call	77
Special Incident.....	0
Total Alarms	424

Ambulance Transports

911 Transports.....	180
Hospital Requested Transport	0
Non Transports.....	111
Total Patient Contacts	291

CARES Contacts..... 107

plvoice.org

Breaking News – Archive of Past Issues
Early Access to News Articles
Local Arts – Letters to the Editor



Pacific Northwest Luxury
Tailored & Timeless



Architectural Design & General Contractor
Building Locally Since 1992
360-437-8148
marie@newleafwa.com
www.newleafwa.com

New Season Move Management
Senior Moving Specialists

Need Help Moving?
Down-sizing?
De-cluttering?

- Estate Sales and Clear-Outs
- De-clutter, Stage Home for Market, RightSize
- Organize, Pack and Unpack So You Can Relax
- Custom fit plans for your needs & budget

Free in-home consultation!
(360) 774-1255
www.NewSeasonMove.com



Licensed, bonded & insured



Premier Providers of Senior Relocation

Serving Jefferson County and Surrounding Area

Westharbor Homes



WESTHARBOR HOMES brings expertise and creativity to every project, from full custom homes to thoughtful remodels. We pair craftsmanship with clear communication and a streamlined process, so your vision comes to life with less stress and more confidence. Whether you're refreshing a single space or building from the ground up, our team is committed to quality, integrity, and making the experience as smooth as possible.

www.westharborhomes.com

Seafood Sundays



The Fireside

Enjoy a special Three Course Dinner menu each week. \$39/person



Every Sunday in January

www.portludlowresort.com/the-fireside/



Home Comfort
ALLIANCE
Formerly Sullivan Heating & Cooling

Heating | Cooling | Ductless
Installation & Repair
Residential / Commercial / New Construction



Serving the Peninsula with award winning customer service since 1994!

360-200-6207
homecomfortalliance.com

Ask us about tax credits on Energy Star Heat Pumps!

chimacum corner farmstand

visit us! **YUM!**
FOOD FROM HERE open daily 8 to 7

9122 Rhody Drive, Chimacum, WA
360-732-0107, chimacumcorner.com

HAPPY NEW Year 2026
EAT WELL



Liberty Shores
SENIOR LIVING
RETIREMENT • ASSISTED LIVING • MEMORY CARE

LOCALLY OWNED AND MANAGED

360.779.5533

19360 Viking Ave NW | Poulsbo WA, 98370
www.LibertyShores.com

FIELD ARTS & EVENTS HALL

PORT ANGELES' PREMIER WATERFRONT EVENTS VENUE



Field Hall showcases the most stunning views of the Strait of Juan de Fuca and Olympic Mountains inside a luxury modern venue. Onsite amenities include a finishing kitchen adjacent to the banquet space, dressing room suites for bridal parties and groomsmen, and presentational theater. Our flexible setups can accommodate 20 - 300 guests.



PHOTOS: @CASSIEJOHNSONPHOTO

Request your free event quote

EMAIL: GEORGIA@FIELDHALLEVENTS.ORG • CALL: (360) 504-2415
SPECIAL RATES AVAILABLE FOR MID-WEEK OFF-SEASON CELEBRATIONS

Arts & Entertainment

Wherefore Art Thou, Meryl Streep?

by Jim Gormly, President, LVP



Ever dream of being Walter Mitty, Robin Hood, Thelma, or Louise? Imagine transforming yourself into a character that solves a murder mystery, commits a crime, or finds romance? If so, come to a Play Readers Club session at the Beach Club on the third Tuesday of every month (January – October) at 6 p.m. Reading aloud a character's part in a play is a great way for you to stimulate your mind, flex your creative muscle, and enjoy a social gathering, without the stress of memorizing lines, wearing costumes, or attending rehearsals.

Here's how it works. The Ludlow Village Players (LVP) selects a comedy or drama for the night's reading. A LVP member leads the session, describes the characters, and offers attendees a role for each character. For those who want to participate, they select a character and then read aloud their parts in the play. There's no pressure to participate. You can just sit and listen, but it's a fun way to become one of the characters, hamming it up as much as you like. You don't need to memorize any lines; you only need to read aloud.

Rest assured, LVP has a good feeling for the type of play that you'll find enjoyable. Often, a Play Readers Club session serves as a good way to evaluate a play for the next LVP performance. Join us at 6 p.m. on the third Tuesday of any month at the Beach Club and transform yourself into an actor. If you're interested, email readers@ludlowvillageplayers.org. You'll receive an email with information about the next Play Readers Club session.

The Beach Club is located at 121 Marina View Drive in Port Ludlow.

Port Ludlow Performing Arts Launches the 2026 Concert Season - Special Performance by Andrew Allen

by Jason Wright, Guest Writer



On **Sunday, January 25**, at 2 p.m. at the Bay Club, you will have the uplifting experience of enjoying the warm resonance of acoustic pop-rock and award-winning Canadian singer-songwriter, Andrew Allen. Known for

his magnetic presence, genre-crossing songwriting, and internationally recognized hits, Allen's upcoming performance promises not only an afternoon of exceptional music, but also an immersive experience blending storytelling and artistry with a heartfelt connection.

As a multi-platinum singer-songwriter, Allen has built a career with a wide-ranging catalog of music that extends beyond the traditional boundaries of a recording artist. His ability to craft melodies that linger — simple yet emotionally resonant — has reached millions of households worldwide, and been featured in films *Abduction* and *A Dog's Way Home*, TV series *The Bachelor* and *Bringing Up Bates*, and commercials for Folger's coffee.

While many artists reach their audiences through streaming platforms or studio production, Allen is most at home on a stage — guitar in hand, loop pedals underfoot, and a room full of folks. His live performances are often described as uplifting, energetic, and profoundly personal. Each show blends his acoustic, pop-rock roots with dynamic looping techniques that enable him to create rich, layered soundscapes in real time.

What truly sets Allen apart as a performer is his ability to engage audiences into narratives behind his songs. With charismatic storytelling, disarming humor, and a natural sense of spontaneity, he creates a shared moment between artist and the audience so that the music becomes a living, evolving experience. Whether he's performing in an intimate venue or a festival amphitheater, he connects with his audience and leaves them inspired.

Those familiar with Allen's hits can expect fresh, live

interpretations, and newcomers will quickly understand why his career has resonated with so many people around the world. With a set list likely to span heartfelt ballads, vibrant up-tempo tracks, and musical stories, the concert will be an unforgettable kickoff to Port Ludlow Performing Arts' 2026 concert season.

For more information, on Andrew Allen, please visit *andrewallenlive.com*. For tickets, please visit *portludlowperformingarts.com*. The Bay Club is located at 120 Spinnaker Place in Port Ludlow.

Festive Holiday Open House at the Port Ludlow Art League Gallery

by Barbara Grondal and Paula Berman, Guest Writers

The Port Ludlow Art League Gallery's holiday open house was a festive event drawing an enthusiastic crowd. With the holidays just around the corner, shoppers were eager to browse a wide selection of artwork, handcrafted gifts, and unique pieces for holiday giving. It was uplifting to see so many shoppers choosing to celebrate the season by supporting creative talent within the community.

Adding to the festive atmosphere, Port Townsend's Ground to Perfection coffee house provided complimentary coffee and baked goods throughout the day, giving shoppers a taste of Ground to Perfection Too coming soon to Port Ludlow.



In addition, four lucky shoppers won gallery gift certificates, adding an extra spark of excitement to an already vibrant event.

Thanks to everyone who attended, supported our artists, and helped make the event such a success. The Port Ludlow Art League is looking forward to hosting more events like the open house and continuing to bring creativity and connection to the community.

The gallery is now refreshed and ready to meet your shopping needs. Aside from the holidays, be sure to drop by and pick out that perfect gift for birthdays, dinner parties, and anniversaries. The gallery is located at the corner of Oak Bay Rd. and Osprey Ridge Dr. in Port Ludlow and open Tuesday – Saturday, noon – 4 p.m.

Port Angeles Field Arts & Events Hall - January Calendar of Events



Field Arts & Events Hall in Port Angeles is the newest entertainment and events facility on the Olympic Peninsula. Field Hall hosts local, regional, national, and international music and performance artists inside the 500-seat Donna M. Morris Theater. Here's the calendar of events for January.

- *Free Jazz Sunday with The Joel Ricci Trio* – **Sunday, January 4**, 12 p.m. Raw, working-class original jazz with Joel Ricci, Sal Michael (drums) and Kendall Melton (electric and stand-up bass). Free event.
- *Dirty Dozen Brass Band in the Thomsen Club* – **Sunday, January 11**, 2 p.m. and 5 p.m. The Grammy award-winning New Orleans-based Dirty Dozen Brass Band has taken the traditional foundation of brass band music and incorporated it into a blend of genres including Bebop Jazz, Funk and R&B/Soul. Tickets: \$40 - \$50, 2-item food and drink minimum.
- *Open Mic Monday with Bread & Gravy* – **Monday, January 12**, 6 p.m. Hosted by Stephanie and Jess Doenges (*Bread & Gravy Duo*), this is a free, all-ages open mic event open to performers of all kinds. Additional dates include **January 26, February 9, February 23, March 9 and March 23**. Free event.
- *Frozen Sing-Along* – **Sunday, January 18**, 4 p.m. Dress up and sing-along for this special screening of the magical musical adventure: Disney's *Frozen*! Pay-what-makes-you-happy event.
- *I'm Not There* – **Friday, January 23**, 7 p.m. The Academy Award nominated, highly unconventional biopic *I'm Not There* was written and directed by Todd Haynes and features powerful performances from Christian Bale, Cate Blanchett, and Heath Ledger as Bob Dylan. Pay-what-makes-you-happy event.

- *International Guitar Night* – **Tuesday, January 27**, 6:30 p.m. International Guitar Night brings together four global virtuosos – Lucas Imbiriba, Stephanie Jones, Alexandr Misko, and Taimane – for an electrifying evening of genre-defying acoustic mastery. Tickets: \$35 - \$55 adult, \$20 youth under 18.
- *The Peking Acrobats* – **Thursday, January 29**, 6:30 p.m. The Peking Acrobats bring to life a rich and ancient folk-art tradition, infused with the dazzling pageantry and spectacle of modern Chinese theatrical circus. Tickets: \$40 - \$65 adult, \$25 youth under 18.
- *Every Castle, Ranked* - **Friday, February 6**, 7 p.m. A hilarious and tender solo show where Lindy West (NYT bestselling author of *Shrill*, and executive producer of the Hulu series of the same name) ranks castles, confronts childhood fantasies, and finds unexpected hope in toilets, butts, and the bittersweet truths of adulthood. Tickets \$22 - \$32 adult, \$16 youth under 18.
- *Jovino Santos Neto Quinteto* - **Saturday, February 7**, 7 p.m. Expect an exhilarating journey through the rhythms and colors of Brazil, led by master pianist and composer Jovino Santos Neto. Tickets \$15 - \$35 adult, \$12 youth under 18.

For more information, please visit fieldhallevvents.org. To purchase tickets, please visit fieldhallevvents.org/tickets. Field Hall is located at 201 W Front Street in Port Angeles, WA.

Northwind Art's Pop-up Sale, New Exhibits, and Classes



Collage by Glo Lamson.

Northwind Art's Small Expressions and Showcase 2025 exhibits at Jeanette Best Gallery will continue to be available for viewing during the Port Townsend's first Saturday Art Walk on **January 3**. Both exhibits will close on **January 5**.

The public is invited to shop for bargains on artwork, frames, and art supplies at Northwind Art's second annual Pop-Up Sale on **January 17, 18 and 19** at Jeanette Best Gallery. For updates on sale hours, please visit NorthwindArt.org.



Vessel by Rick Stafford.

After a bit of sprucing up and the Pop-Up Sale, Jeanette Best Gallery will reopen **January 26** for the *Confluence* exhibit, pairing two- and three-dimensional art by Darwin Nordin and Kristin Tollefson. The Showcase 2026 exhibit brings together eleven Pacific Northwest artists exhibiting artwork in a variety of media. Both exhibits will be available for viewing during Port Townsend's first Saturday Art Walk on **February 7**.

Jeanette Best Gallery is open Thursdays through Mondays, noon - 5 p.m., and 5 - 8 p.m. during every first Saturday Art Walk. The gallery is located at 701 Water St. in Port Townsend. For more information, please visit NorthwindArt.org.



"Varied Thrush" by Darwin Nordin

Northwind Art School

The Northwind Art School at Fort Worden State Park offers the following open studios and new classes in January:

- Drop-in Open Studio at Northwind, every **Tuesday**, 1 - 7 p.m.
- Watercolor Painting Level 1 with Suzanne Lamon,

Fridays, January 9 - February 13

- New Year Open Studio with Glo Lamson, **January 10**
- Open Studio for Jewelry and Metals with Madison Barnett, **January 11**
- Introduction to Mixed Media with Erika Wurm, **January 17**
- Hand Mending for Knits with Alexa Anderson, **January 18**
- Watercolor: Composition 101 with David Repyak, **January 19**
- Make a Potato-Stamped Tote Bag with Jodi Ericksen, **January 21**
- Intro to the Sewing Machine with Evette Allerdings, **January 31**

To learn more about classes and enroll in a class, please visit NorthwindArt.org and select Take a Class. The Northwind Art School at Fort Worden State Park is located at 200 Battery Way in Port Townsend.

Customer Appreciation Month at the Port Ludlow Art League Gallery



Every two months, the Port Ludlow Art League Gallery bursts with new paintings, jewelry, ceramics, photography, textiles, and cards all by local artists. The gallery is a vital cultural hub, and its success is a two-

way street, relying as much on the community's support as on the local artists' creativity. Partnering with local business, Jefferson County schools, and area residents, gallery patrons keep the flame of art alive in our community.

Along with inviting the public to attend classes, events, and speakers, the art league would like to thank you for your support by giving you the opportunity to win a Customer Appreciation Basket. The winning ticket will be drawn at the end of January so the winner need not be present and can pick up the basket at the gallery.

The gallery is located next to Sound Community Bank in Port Ludlow at the corner of Oak Bay Rd. and Osprey Ridge Dr. You can enjoy shopping at the gallery Tuesday through Saturday from noon – 4 p.m.

Port Ludlow Art League - Artist of the Month

Featured Artist – Caroline Gilmore



Caroline uses acrylics to infuse light, levity, and mystery into her magical paintings. Her use of vibrant colors and the juxtaposition of light versus dark transform the most ordinary objects into something truly extraordinary. Whether it's a bathtub and butterflies under the stars or a bird and bee alight on an outstretched hand, it's up to the viewer to interpret and weave their own story as to what they are experiencing.

During January, you can enjoy Caroline's delightful artwork at Sound Community Bank and online at portludlowart.org.

A reception for Caroline is set for **Wednesday, January 14**, 4 – 5 p.m. in the lobby of the bank and 5 – 6 p.m. at the adjacent Port Ludlow Art League Gallery. The bank and gallery are located at the corner of Oak Bay Rd. and Osprey Ridge Dr. in Port Ludlow. Enjoy shopping at the gallery Tuesday – Saturday, noon – 4 p.m.

For more information, please email info@portludlowart.org or visit portludlowart.org.

Port Ludlow Art League - Jeweler of the Month

Featured Artists – Port Ludlow Art League Jewelers



During January, the jewelry artists in the Port Ludlow Art League will display their jewelry designs at Sound Community Bank, the Port Ludlow Art League Gallery, and online at portludlowart.org. These artists use a wide range of techniques, from metalworking, stone setting, wire weaving, and torch-fired enameling, resulting in unique, one-of-a-kind pieces.

A reception for the Port Ludlow Art League's jewelers is set for **Wednesday, January 14**, 4 – 5 p.m. in the lobby of the bank and 5 – 6 p.m. at the adjacent Port Ludlow Art League Gallery.

The bank and gallery are located at the corner of Oak Bay Road and Osprey Ridge Drive in Port Ludlow. Enjoy shopping at the gallery Tuesday – Saturday, noon to 4 p.m.

For more information, please email info@portludlowart.org or visit portludlowart.org.

Bay Club Art Exhibit - Artists' Choice



Olympic Sunrise by Mary Rodgers.

From **January** through **February**, the Bay Club features an exciting, new art exhibit. Port Ludlow Art League members have selected the pieces they want to exhibit, free from a theme, allowing an authentic display of their creative journeys, current explorations, and the work they feel best represents their artistic voice.

The art exhibit is sponsored by the Port Ludlow Art League. Be sure to stop by the Bay Club to vote for your favorite piece.

The Bay Club is located at 120 Spinnaker Place in Port Ludlow. For more information on art exhibits at the Bay Club, please email Sheryl Goldsberry at info@portludlowart.org.

Port Ludlow Photographers - The Effects of AI on Photography

On **Monday, January 26**, the Port Ludlow Photographers resume their monthly meetings on the fourth Monday of every month from 10 a.m. - noon at the Bay Club. The group is open to everyone. No photographic experience is required and there are no dues.

At the January meeting, John Fillers will give a presentation about the effects of AI on photography. AI can automate tasks such as culling, noise reduction, and basic edits and enhance photographs by producing sharper details and better lighting. However, AI could erode traditional skills and inadvertently create visual uniformity across all photographs that devalues a photographer's work. This presentation will raise some interesting issues and should prompt a lively discussion. As always, everyone is invited to share their photographs, questions, and advice.

The Bay Club is located at 120 Spinnaker Place in Port Ludlow. For more information, please contact Aven Andersen at aven1936@live.com.

Member SIPC

**Let's schedule your
annual review.
Call or stop by.**



Rick Smith, CFP®, AAMS®
Financial Advisor
9526 Oak Bay Rd Suite 300, Po Box 65138
Port Ludlow, WA 98365
360-437-5113

EJB-19325-A-E-DA-3 AECSPAD> edwardjones.com

Village News

Bay Club / South Bay

SBCA Happenings

by Carolyn O'Keeffe, President, SBCA Board of Directors

Happy New Year, and welcome to January 2026!

We made it through the winter holidays and all the activities, family and joy they bring. Shopping with my 7-year-old and 9-year-old grandsons to find toys for the Toys for Tots drive gave me a glimpse into words in their vocabularies, games they love and nonstop energy! Lunch was a welcome reprieve.

At the Bay Club, our Activities Team of volunteers created a magical place with all the beautiful decorations throughout our club. We also enjoyed a lovely Winter Gala event with wonderful food, company, and music on December 12. Our chef, Rick Unure, and his team were outstanding in serving us a classic holiday dinner. Musicians Jonathan Doyle and Connor Forsyth made the event a beautiful night out with friends.

Here are a few of our upcoming pancake breakfast dates and nonprofit organizations that will be supported: **January 2**, the PSO Bluebills; **February 6**, Center Valley Animal Rescue; **March 6**, PLVC Trails Committee; **April 3**, Jefferson Healthcare Hospice.

Our January Member Social is scheduled for the 9th – bring your favorite “tailgate” finger food, wear your team gear, and join us at the Bay Club! Other ideas the Activities Committee are considering – a chili cookoff and a chowder cookoff! Stay tuned for more details.

We have planned additional lectures in the First Nations Lecture series by Olympic Peninsula Center Executive Director David Brownell. We have the first two dates scheduled: **January 15** and **February 12**. The other dates will be determined and shared once they are known. His lectures have been very well attended by South Bay community and the greater Port Ludlow community. If you're interested in local history, plan on attending.

You may have noticed the openness of our front landscaping in recent weeks. The Katsura trees were removed, and their stumps were ground down in mid-November. Their removal paves the way for us to fix the broken curbing and sidewalks around the front that have been hazardous for all of us. After that, we can work on added fresh and nutrient rich soil prior to adding new plants. A new landscape design will be created soon with the help of experts.

SBCA Important Dates

Friday - January 2, 8:30 a.m. - Pancake Breakfast, benefiting PSO Bluebills

Thursday - January 8, 9:30 a.m. - Monthly Board Meeting **

Friday - January 9, 5 p.m. - Member Social Potluck - hors d'oeuvres

Thursday - January 15, 1 p.m. - First Nations presentation, S'Klallam History of Port Townsend and gatay

Sunday - January 25, 2 p.m. - PLPA Andrew Allen

Friday - February 6, 8:30 a.m. - Pancake Breakfast, benefiting Center Valley Animal Rescue

Thursday - February 12, 9:30 a.m. - Monthly Board Meeting **

Thursday - February 12, 1 p.m. - First Nations presentation, Old Patsey's Potlach of July 4, 1891

All Thursdays 4 p.m. - Member's Lounge

** All SBCA members are welcome.

To keep informed of meeting dates and times, please visit sbca.club

Committee meetings minutes are posted at sbca.club, then click on the Board Minutes page.

This month the SBCA Board of Directors will be launching a new committee, the Long-Range Planning Committee, that will examine both expenses and revenue of the SBCA in order to develop a five-year long-range plan that will review rising costs and our current revenue sources and consider strategies to increase revenue and decrease expenses. The committee would then recommend the plan to the Board of Directors for their review and approval.

Lastly, on **January 19** the country will observe Martin Luther King Day, a federal holiday that celebrates the life and achievements of Dr. Martin Luther King Jr. and his leadership in American civil rights movement of the 50's and 60's. MLK Day is designated as a National Day of Service. If you have a chance, please join in with neighbors and friends and volunteer in local service projects that support our community.

The First Nations: A Multimedia Presentation Series

As you drive around this beautiful place we call home, have you ever thought about the first people who traversed this area and what their lives were like? Who they were, how they lived, what creatures they encountered, what foods they ate? Often, I sit gazing out my window on misty mornings somehow hoping I might see an ancient canoe come out of the mist. It is not to be. However, the South Bay Community Association, through its Activities Committee, is sponsoring a series of presentations that might help open our eyes to the beginning of people on the Olympic Peninsula – the First Nations.

Mr. David Brownell, the Executive Director of the North Olympic History Center, has already given three presentations about First Nations' people to audiences at the South Bay Community Association. Each presentation has been received with comments such as, "I didn't know that" and "what great information" being common refrains. Starting in January and running through June, Mr. Brownell will continue these presentations, each one a stand-alone version and **you are invited!**

- All presentations are free of charge. There is a donation jar, and you are encouraged to fill it up as all money goes to the non-profit North Olympic History Center
- All presentations are at the South Bay Community Association, 120 Spinnaker Place, Port Ludlow. The presentations begin at 1 p.m. and last about an hour. Mr. Brownell does a question/answer session at the end of each presentation.

Dates / topics for the next two presentations are:

- **Thursday, January 15** - S'Klallam History of Port Townsend and the *qatáy* village
- **Thursday, February 12** - Old Patsey's Potlach of July 4, 1891

Dates and topics for the March – June presentations to be announced later.

SBCA is pleased to offer this series of programs as part of our on-going education/ information outreach. We have also teamed with Jefferson Healthcare for a series of health-related programs, and we are planning several "one off" programs on a variety of topics. Everyone from our Port Ludlow community is invited to these programs unless otherwise specified. Information on dates, subject, and times for all our programs will be placed in the *Voice* magazine or, for SBCA members, sent by eblast.

Many of us are retired, but our brains still need fuel. Come and join in the fun of learning.

Do It Right Roofing & Construction

Located locally in Port Ludlow • Excellent Local References
Quality and Customer Satisfaction is our #1 Goal

- ♦ All Types of Composition
- ♦ Metal, Cedar Shakes
- ♦ Re-Roofs
- ♦ New Construction
- ♦ All Types of Repairs
- ♦ All Types of Construction
- ♦ Repairs
- ♦ Remodels
- ♦ Decks, Siding
- ♦ Custom Woodwork

General Contractor's License
Lic # DOITRIR943Q
Bonded, Insured

William Bacchus
Phone: **360.774.6348**
email: doitrightroofing@msn.com

Michael Haberpointner, PT, DPT

Timothy Mansour, PT, DPT

Faye King, PT, DPT

Bailey O'Hotto, DPT

ACTIVE LIFE
PHYSICAL THERAPY



Balance Training • Spinal Rehab • Rehab After Surgery
• Vertigo Treatment • Personal Training
Medicare and most insurances accepted

www.activelifetherapy.com

9483 Oak Bay Rd. • Port Ludlow, WA 98365 • (360) 437-2444

Port Ludlow Community Church



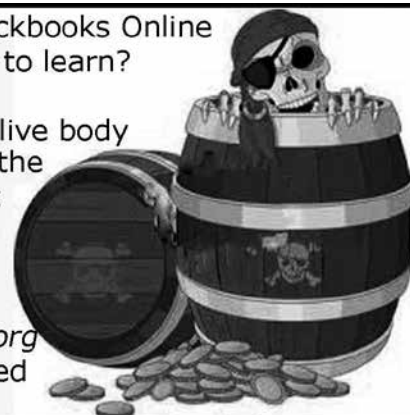
9534 Oak Bay Rd
360-437-0145
plcc@olympus.net
Rev. Dr. Kevin Hall
Join us Sundays at 10:30!

*A church by a clearcut
above a gas station next to recycling
in a village in the woods by the bay*

Do you know Quickbooks Online
or would you like to learn?

PL Voice needs a live body
or two to track the
advertising that
pays for printing
this magazine.

Please contact
finance@plvoice.org
to join us. We need
YOU.



Beach Club / North Bay

Update from the Manager

by Mike Wilson, General Manager

After 20 years of dedicated service to our community, Brian Belmont has retired. I want to express my heartfelt gratitude to Brian for his graciousness and support during this transition. I will truly miss our daily conversations and the opportunity to learn from his deep knowledge of the Port Ludlow area.

As your new General Manager, I am excited, a little anxious, and eager to begin this journey with you. I believe in open and honest communication and in the power of community collaboration. No one person can do it alone, but together, we can accomplish great things. My door is always open, and I welcome your ideas, thoughts, and suggestions for projects you'd like to see happen.

As we welcome a new year, we also look forward to new projects for 2026. Many of you are aware that the Board has approved the construction of an emergency stairway to enhance safety at the clubhouse. The contracts have been signed, and work will begin shortly. We anticipate the project will be completed before the pool opens in May.

At the November Board meeting, the Emergency Preparedness Committee (EPC) was dissolved. The members felt the Committee had fulfilled its mission of providing education and information to North Bay homeowners. Members of this Committee have been invited to join the Port Ludlow Village Council (PLVC) EPC.

Planning is underway for two important events: our Members' Reception on **Friday, April 17**, at 5 p.m. and our Annual Meeting on **Saturday, April 18**, at 2 p.m. Please mark your calendars – we look forward to seeing you there.

I hope you all enjoyed a wonderful holiday season and that the year ahead brings joy and laughter to your lives. As a reminder, the Beach Club will be closed on New Year's Day.

I leave you with a quote from a Sergeant Major I worked for while serving our country, and has had a huge impact on my life:

"There is no magical fairy that is going to do the work." – Sgt. Major Green, USMC

As always, if you have questions or comments about this article or the on-going work at the Beach Club, I can be reached by phone at 360-437-9201 or via email at GM@LMCBeachClub.org.

LMC and the Beach Club

Phone: 360-437-9201

Email: GM@LMCBeachClub.Org

Sign up for our monthly e-*Navigator* by emailing the above address.

Visit LMCBeachClub.org for more information about your North Bay HOA

North Bay Potluck's Chili Cook Off

Event Details:

Do you have what it takes to cook the best chili? Sign up in advance at the Beach Club to participate as one of the entrants in this year's competition. If cooking isn't your strength, but you enjoy tasting chili, you can also sign up to attend the event. Please bring a side dish that serves 8 – 10 people to share with others.

During the event, guests will have an opportunity to taste all the chili entries and vote for their favorite. Prizes will be awarded to the winners, making it a fun and competitive gathering for everyone involved.

Event Information:

- Date: **Saturday, January 17**
- Time: 5:30 p.m.
- Location: Beach Club
- What to Bring: BYOB and your own place settings

Expect plenty of delicious food and a lively atmosphere. It's a perfect opportunity to showcase your culinary skills or simply enjoy tasting a variety of chili recipes.

Sign Up and Volunteering:

If you would like to be a chili chef, or are interested in volunteering to help with the event, please register with Fran Bodman at 360-437-5110 or franbodman11@gmail.com.

Village Council

There Is Always Room at our Table

by Geoff Lang, President, Port Ludlow Village Council

Happy New Year! As the Holidays begin to fade into the background and we welcome the slowly lengthening days, I am remembering the warmth and graciousness of our Thanksgiving. We were invited to our dear friend's home for dinner who, when hearing we had family in town, extended the invitation saying, "There is always room at our table!" We had a wonderful meal, engaging conversation, and camaraderie with their friends and neighbors that can only be found when a group of neighbors chooses to become a Community.

Your Port Ludlow Village Council is here to serve our Community. Our cornerstones are to Protect, Preserve, Promote, and Unify the Village. We have laid out a work plan for the coming year to support these cornerstone commitments.

In January we are rolling out our Resident Survey asking our Community for their input and feedback regarding Council initiatives. Similar to the Resident Survey we ran in late 2024, you'll see some of the same questions as well as new ones. Please take a moment to fill it out and let us know your thoughts. Visit PortLudlowVillageCouncil.org for the survey link. This is your chance to help us set a course for the coming year and beyond.

2026 will feature a number of PLVC sponsored events:

Community Yard Sale — 2025 brought forth the incredibly successful inaugural Community Yard sale. We had local food vendors, non-profits, live music from the *Stringalongs*, and 30 vendors. We look to expand a bit more this spring as we now know how much our Community enjoyed this event.

Community Opportunity Fair — We will bring the Community Opportunity Fair to the Bay Club this August. The 2024 event was packed with great information! We had around 60 local organizations sharing the mission and providing opportunities for people to participate in their activities and their organizations.

Canine Costume Parade — The popularity of this event in late October 2025 took us by surprise. We had hoped to have *maybe* 15-20 participants, and we ended up with nearly 40! We did learn a few lessons though and will try to host this event in late **September** or very early **October** in hopes of a better weather day. Now knowing how popular this was, we hope to expand this into a Harvest Fair with food and craft vendors in addition to our bake sale and Pooch Parade. And yes, we encourage costumes!

Holiday Lights and Tree Lighting — We look forward to the **December** tradition of festive lights in and around the Village Center. This annual tradition could not take place

without the collaboration of PLA, Astound, and Lakeside Industries.

Continued Community Website Enhancements — We have continued to build greater Community Sharing capabilities to our website. We are actively populating our Community Event Calendar as events are submitted to us. Please send us yours! We are also creating a page on our website for any local clubs, organizations, and classes to post their mission, schedule, and contact information. Think of this as an online version of the Community Opportunity Fair, or for those who have been here for a while, an online Redbook.

Summer Event — We are still working on the details, but we are planning a summer event as well! Stay tuned by signing up to receive email "eblasts," instructions are found on our website.

Would you like to help out?

We have many ways for you to get involved and we would appreciate your help! Please consider joining our volunteer pool. Details on how to join are found on our website under the 'From Your Council' section. There is a link to 'volunteer for an event' where you can sign up to help out on the day of an event. As we need event volunteers, we'll reach out and if you are available to help, we'll provide you with information. If you are not available, we'll try for the next event. If you would like to be more involved with the Village Council, all of our committees are accepting new members. Reach out via Info@PortLudlowVillageCouncil.org. And if you really want to jump in with both feet, we have the capacity to add Council Members. We are particularly excited to restart a Welcome Team designed to reach out to new residents, help them settle in, provide general local information and most importantly, ensure that they feel welcome to our Community. We would love to have you join us, there is always room at *our* table!

Village Council Meetings

PLVC Board Meeting
Thursday, January 8
3 - 5 p.m., Beach Club

PLVC Workshop
Tuesday, January 20
3 - 5 p.m., Beach Club

plvc.org

Port Ludlow Village Council December Meeting Summary

This briefing synthesizes the critical information presented at the Port Ludlow Village Council meeting on December 4, 2025. Key developments include a major proposed surcharge for a wastewater treatment plant upgrade, significant updates on local electrical infrastructure, a new push to schedule Hood Canal Bridge openings, and a stark warning about the Jefferson County budget crisis.

Port Ludlow Associates (PLA) Wastewater Project:

PLA announced a multi-phase project to upgrade the wastewater treatment plant necessary to regain capacity and meet future regulations. Phase One will require a capital investment of \$4.3 million to be funded by customers. This will be implemented via a surcharge projected to be \$22 per billing period (\$11.25 per month), starting in April after a formal notification process. The project is crucial for the community's future development but comes at a direct cost to residents.

Jefferson County PUD Infrastructure & Safety: The Public Utility District (PUD) is actively working to improve electrical resiliency. A grant has been sought for a new feeder line that would improve reliability for approximately 2,000 customers in the North Bay and Marrowstone Island area. The PUD highlighted the vulnerability of Port Ludlow's aging, direct-buried underground power lines, which have a 30–40-year lifespan and are difficult to repair.

Residents were urged to report downed power lines by **calling 911** and to exercise caution around PUD crews working in rights-of-way.

Jefferson County Budget Crisis & Bridge Advocacy:

County Commissioner Greg Brotherton reported a severe county budget shortfall, with a \$1.5 million deficit to be cut from the 2026 budget, threatening staff capacity and services.

On a more positive note, a significant advocacy effort, spurred by the upcoming FIFA World Cup, may finally lead to a pilot program for scheduled recreational openings of the Hood Canal Bridge, potentially mitigating major traffic delays.

The County is also conducting a new speed study in Port Ludlow in response to traffic safety concerns.

Falls Terrace Development: PLA is proceeding with its next major subdivision, Falls Terrace, located at the current RV park site. The project, planned for approximately 60 single-family homes, is in the late stages of surveying. While many details are pending, the RV park is expected to remain operational through October 2026.

Hear for Life AUDIOLOGY



Camron Meikle, Au.D.
Board Certified Audiologist

"When experience makes the difference."

Comprehensive Hearing Evaluations
Digital Hearing and Assistive Listening Devices
Hearing Device Repairs & Batteries
Insurance Billing • Physician Referrals

Call For A Hearing Consultation:

360 437-7767

115 Village Way, Port Ludlow



Black Bear Diner

Good Old-Fashioned Family Food!

1471 E. Washington St., Sequim, WA *Comfort Food Classics*

Breakfast, Lunch Or Dinner Served Any Time Of The Day!

ORDER ONLINE! <https://order.blackbeardiner.com/>

Being Safe While Walking

Pedestrians: Walk facing oncoming traffic.
Wear light-colored or reflective clothing so that you can be seen easily in the dark.

Drivers: Watch out for walkers. Remember, they can't always see you coming.

Speed Limit

in Port Ludlow Bay is

5 knots

- No Wake, It's the Law! -

Port Ludlow Pharmacy

YOUR NEIGHBORHOOD PHARMACY

Access prescription services, schedule vaccinations and boosters, and find a wide selection of over-the-counter medications. Contact us for billing assistance, questions, or to transfer your prescriptions.

9481 Oak Bay Road, Suite A, Port Ludlow
360.379.2254 | jeffersonhealthcare.org

Jefferson Healthcare

Port Ludlow Art League

ART & GIFTS Gallery

Gift Basket drawing!

BLUE DOT Specials!

JANUARY CUSTOMER APPRECIATION!

HOURS: Noon - 4:00PM TUES - SAT

Located next to Sound Community Bank
@ 9500 Oak Bay RD, Suite B, Port Ludlow
www.portludlowart.org





Medically Endorsed & Approved Cannabis Retailer

Sea Change Cannabis is locally owned and operated. As Jefferson County's first Retail & Medical Cannabis license, we bring the most experience in our area. What is Sea Change?

A substantial change in perspective, especially one that affects a group or society at large, on a particular issue.

We are leading the Sea Change in Cannabis Culture!

Come in and shop our diverse assortment of products!

Open 7 days a week

Sea Change Cannabis
11323 Rhody Drive
Port Hadlock-Irondale, WA 98339
(360) 385-1320

Required Disclaimer Our products have intoxicating effects and may be habit forming. Marijuana can impair concentration, coordination and judgment. Do not operate a vehicle or machinery under the influence of this drug. There may be health risks associated with the consumption of these products. For use only by adults twenty-one and older, keep out of reach of children.

John L. Scott®

REAL ESTATE
Port Ludlow Office
In the Village Center
56 Village Way Port Ludlow



Happy New Year!

As we wait for economists to figure out what lies ahead for the Real Estate Market in 2026 We're here to help you navigate what the market means to **you!**

If you're thinking of making a move, we'll be here with insight, experience and knowledge to help you.

How can we serve you?
360.382.7709
www.portludlowoffice.johnlscott.com
Also serving you in Port Townsend & Port Angeles/Sequim
www.porttownsendoffice.johnlscott.com

Servicing Clallam and Jefferson Counties!

IN-HOME CARE AGENCY

Helping you maintain independence and quality of life!



Services:

- Bed Bound Care
- Companion Care
- Meal Preparation
- Supportive Hospice Care
- Medication Reminders
- Transportation/Errands
- Personal Care Assistance (bathing, grooming, dressing, and dressing)
- Light Housekeeping (laundry, changing bed linens, tidying up, ect.)



Ashley Travis
Co-Founder/Client Care Director



Jaimey Quinonez
Co-Founder/Administrator



Tanya Boone
Caregiver Supervisor



OLYMPIC PENINSULA HOME CARE

 (360)477-4695
 info@olypenhomemecare.com
 www.olypenhomemecare.com

A NEW CHAPTER BEGINS AT PORT TOWNSEND SENIOR LIVING



OFFERING: INDEPENDENT & ASSISTED LIVING



Call for Your Exclusive Tour!
360-641-7436

- A vibrant, creative resident community
- Daily opportunities for art, music, writing & wellness
- Spacious studios, 1BR & 2BR apartments
- Emergency call system and laundry
- Close access to all Jefferson Health Care

*Formerly known as Avamere of Port Townsend



PORT TOWNSEND
SENIOR LIVING

by COGIR

KPTZ

91.9 FM



Port Townsend • KPTZ.org

PORT LUDLOW MINI STORAGE

Your local, secure storage solution

OUR SERVICES

- ✓ Enclosed units in multiple sizes
- ✓ Outdoor parking for boats, trailers & RVs
- ✓ Convenient. Reliable. Right here in Port Ludlow

CALL NOW ► 360-344-2592

 plministorage@gmail.com  720 Walker Way
Port Ludlow, WA 98365

Bayside By-The-Numbers

The path to secure housing is a challenge faced by families, seniors, veterans, people with mental and physical special needs, people fleeing domestic violence, those suffering from substance use disorder and those experiencing circumstantial or generational poverty. Please help them along their path.


Make your contribution at

www.baysidehousing.org/donate



Bayside Housing & Services aims to strengthen community through housing, advocacy, and human services supporting social and economic independence.

Baysidehousing.org | EIN 47-1798297



Dedicated to Life-Long Learning

Lessons in Guitar, Piano, Voice, Ukulele, Mandolin, Composition, Music Theory

Adults and Youth

Serving Port Ludlow, Chimacum, Port Hadlock-Irondale, Port Townsend

RareEarthMusicStudio.com

Recreation & Sports

Trail Mix

by Larry Scott, *Trails Chair*



Alder leaners on Timberton Homes Trail.

Photo by Dean Morgan

“Port Ludlow — A Destination Hiking Village”

Question: What does Trails do when it's not building “new” trails? Now is a good time to answer that while we await the go-ahead to finish our Oak Bay Trail project from Walker to the Northern ABT crossing. Answer: From our extensive core of dedicated Trail Stewards, we solicit feedback and identify improvements that can (or need) to be made to the trail under their particular care. Then, individuals go out on the smaller undertakings, or we put crews together to accomplish the larger tasks for a couple of hours (standard traditional time) and then enjoy more camaraderie around a beverage at the Village Store. As an illustration, I thought I would show the *Voice* readers an example.

At the monthly PLVC Trails meeting on December 2, the committee gathered input from its stewards and generated the TO-DO list. Here is the list Trails will be using to guide our efforts while dodging between atmospheric rivers and King tides. Of course, severe weather may require shelving some of these while we clear blowdowns, but we will return to them.

TO-DO List from 12-2-2025 Trails Meeting

Around the Bay Trail

- Clear overhangs at southern crossing for better pedestrian visibility.
- Check on steps below Waterhouse for spongy wood and replace as necessary.

Creek View Loop

- Widen trail at southern approach to old work access road.

Interpretive-McCormick Connector

- Add additional step(s) at switchback area near double benches.
- Correct for muddy area at end of bridge crossing.

McCormick R/R Trail

- Reroute trail onto raised edges in the flat areas that do not have a drain off avenue (three - five locations).

Montgomery Loop

- Add fresh layer of crushed rock between Libby and Condon. 2. Replace trail sign (heading north from Condon).

Olympic Terrace Loop

- Correct for annual wet spot near Teal Lake Loop junction.

Osprey Trail

- Needs overall TLC to clear debris and replace soft steps.

Picnic Point

- Add chips and possibly replace side rails in area leading from ABT near Village.
- Cut back encroaching salal in area leading from ABT near creek.

Teal Lake Loop

- Steward requests dog pickup signage for western road segment.

Timberton Loop

- Improve sloppiness at traditional area of “Bob Ford” cutoff.

Timberton Homes

- Clear multiple alder leaners.

Timberton ABT Connection

- Add steps to area approaching retention pond.

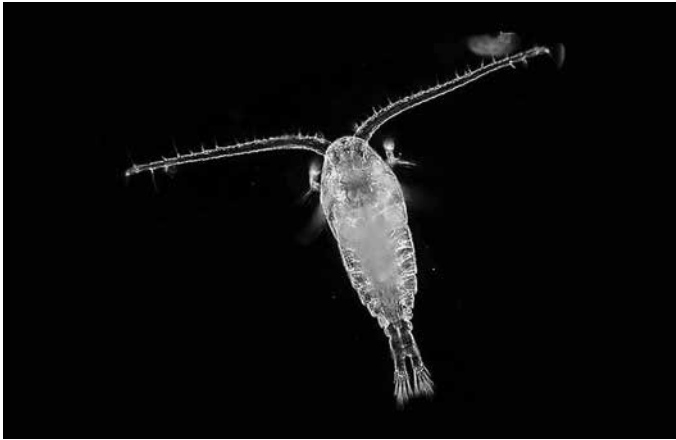
Wells Court

- Improve uneven surface caused by raised roots.

If you want to come out for a Fun Day of camaraderie while helping to improve our community, send me an email at mclgscott@cablespeed.com. “Let’s Keep Improving our Trails.”

Fireflies in the Deep

by Gail Wellenstein, Kitsap Beach Naturalist



Copepod, a type of crustacean zooplankton.

Photo courtesy of oceanservice.noaa.gov/facts/plankton.html

Kayaks quietly paddled away from the boat ramp at Mystery Bay, heading toward Indian Island after sunset, seeking the shadows on a moonless night. The water was calm, and only our guide spoke as we approached the steep shoreline, careful to avoid downed trees. Paddles dipped carefully into the water and suddenly there was a spark, then another, and soon every kayak was surrounded by tiny flashes of blue-green light, produced by zooplankton using the chemical luciferin, looking like fireflies in the deep.

There was another event occurring that night throughout all the oceans of the world. Untold numbers of zooplankton rose from darker and deeper waters to feed on the phytoplankton floating near the surface. As dawn approached, they sank several hundred meters to avoid their predators and damaging ultraviolet radiation. When considering the sheer mass of organisms repeating this every 24 hours, it becomes the largest migration on the planet, visible from ships and satellites.

This phenomenon was discovered during World War II, when sonar operators noticed signals that seemed like they came from the ocean bottom, but they existed far above the recorded depth and would creep even closer to the surface at night. Submersibles and nets were sent out to investigate, and what they discovered was a combination of zooplankton and small fish -- trillions of them. What appeared to be empty, open water at night was actually filled with a staggering variety of tiny animals of different colors, dazzling shapes and bioluminescence.

Zooplankton are small, weak swimmers that usually drift with the current and survive by eating phytoplankton or other zooplankton. They are single celled, animal-like organisms in a group called protozoa. Zooplankton range

in size from microscopic to the size of jellyfish and are found throughout the world.

Some zooplankton remain in this drifting stage throughout their life. Others, like the larva of urchins, sea stars, crustaceans and most fish, are only temporary members of this category, leaving this label behind when they become truly mobile.

One of the most common permanent zooplankton is krill, a shrimplike animal just a half inch long, that lives in swarms up to 60,000 krill per cubic meter. These swarms confuse predators into thinking it is one large animal. Krill are particularly important in the southern oceans as they are a main food source for penguins, seals, and baleen whales. They survive the severe winters of Antarctica when phytoplankton is less available by shrinking their bodies to make it through periods of starvation. Despite this harsh environment, the total weight of Antarctic krill is more than the total weight of all the humans on the planet.

An ongoing research project in the Pacific Northwest takes advantage of vertical migration. The Pacific Northwest Crab Research Group, in collaboration with various organizations including the Port Townsend Marine Science Center, sets up light traps from spring through summer to attract zooplankton at night. The objective is to evaluate how many larval Dungeness crabs are present and whether the number of larvae this year can predict future adult numbers.

These traps collect zooplankton that are drawn by the light. Each morning the trap is emptied, the contents sorted, and Dungeness crabs are counted. The hope is that the data collected will lead to improved, long-term management and sustainability of the Dungeness fishery.

A side benefit of these traps is the occasional capture of a giant pacific octopuses' larvae. Kakantu, the most recent octopus at the aquarium in Port Townsend, was captured in a light trap when he was the size of one grain of rice. He was carefully tended by the staff and grew rapidly for two-and-a-half years. He was released into his home waters last winter upon reaching maturity, hopefully to find a mate and continue the cycle of life.

Port Ludlow Hiking Club

by John Nuerenberg, Port Ludlow Hiking Club

Hikers meet at the Bridge Deck in Port Ludlow on the day of the hike at 8:15 a.m. to get directions to the trailheads, arrange carpools, and depart at 8:30 a.m.

Those on the hiking email roster receive an update the week of a scheduled outing. If you would like to be added to the email roster, send a note to plhikingclub@yahoo.com, or go to the club's website at portludlowhikingclub.com and click on "Contact" to send a message. Anyone may join in the hikes; you don't have to be a member of the email roster or club.

Friday, January 2 – Larry Scott Trail

We will start at the southern end at Milo Curry Trailhead and walk 4-6 miles round trip with minimal elevation gain, depending on how far the group wishes to go before turning around. There is a restroom at the trailhead and another at the 3.5 mile-point (aka Cape George Trailhead) if anyone wishes to go that far. The hike might vary in distance and direction depending on weather and trail conditions. Parking pass is not required. Hike leader: John Fillers, 360-215-4049.

Friday, January 30 – Sea to Sea

This is an easy hike featuring historic Fort Ward Park, Bainbridge, and follows interior park trails to Blakeley Harbor, complete with views of Rich Passage at one end and the Puget Sound Seattle Skyline at the other! We may

hear sea lions, see ferries, and if the weather is clear, views of the Olympics!

This year we will begin at the Upper Forward parking lot. We will begin by walking down to Fort Ward Park and along a half-mile flat paved trail with views of Rich Passage and the gun batteries and old barracks of Fort Ward dating from the early 20th Century. We will next climb approximately 200 feet and follow interior park trails to Blakely Harbor where we will stop and enjoy a snack on the beach. We will then circle back and end our hike where we began at the upper parking lot. There are several rest rooms stops along the route.

Total distance: 5-6 miles; elevation gain: 200 feet. No parking passes needed. Fort Ward is near Lynwood Center where there are excellent options for lunch for those who would like to extend their visit. Hike leaders: Jer and Jorge Carraso, 206-920-8054.

Wednesdays: Timberton Loop. Walk the 4.2-mile Timberton Loop. Enjoy views of the Olympic Mountains. This is a no-leader hike. Meet other walkers at the parking lot trailhead on Timberton Drive at 9 a.m.

Monday/Wednesday/Friday — 8 a.m. Join the "Trail Club Group" that meets at the golf club parking lot for a self-led walk on the abandoned golf cart path trail or other alternative route.

For more hiking information, map of the Port Ludlow Trails and descriptions and pictures of previous hikes and other destinations, go to portludlowhikingclub.com.

Happy New Year!

by Jim Mancill, PGA Head Professional, Port Ludlow GC

Welcome 2026! Hoping that everyone had a wonderful holiday season with family and friends and as we head into the new year, all of us at the Port Ludlow Golf Course would like to extend an invitation to come out to experience our golf course. Be our guest and enjoy a round of golf at the picturesque Robert Muir Graves course with incredible views of the Hood Canal, Ludlow Bay, and Olympic and Cascade Mountains.

Please cut out the certificate below and present it in the Golf Shop at time of check-in for your complimentary round of golf for two players. Looking forward to seeing you out in 2026. See you on the trails!



Classifieds

The monthly cost of classified ads is \$17 for less than 25 words and 60 cents per word thereafter. There is a prepayment discount, 10% for 6 months or more. We accept "personal" ads such as public "thank you" ads. We do not accept ads of a political nature. The deadline for new ads, changes, and cancellations is the 8th of the preceding month. We send out invoices on the 1st of the month. We normally send emailed invoices but will mail them if you request. Ads will run until canceled. Cancel ads by sending email to classified@plvoice.org. You may pay by check, money order, credit card or bank transfer. Email your ad and contact information (name, billing address, phone numbers, and email address) to classified@plvoice.org.

COMPUTER & TECHNOLOGY

PT Computers: we work on Apple, Windows and Linux computers. Diagnostics & Repairs, Virus Removal, New Computer Set Up. We Sell: Printer Ink, various cables and Adapters, Phone chargers/cables. 360-379-0605.

FINANCIAL SERVICES

Accounting: Bookkeeping services, payroll & payroll taxes, tax return preparation. Need someone to get your books ready for tax season or to keep the books up to date? Do you need help with personal or business tax return preparation? More than 20 yrs. experience. email Rhonda @ r3granger@gmail.com or call 360-358-5340 for more info.

FOOD & BEVERAGE

Dinners To Go service offered by GBF Catering on Tuesdays and Fridays. Order online and see additional information at GBFcatering.com. Catering services available in Jefferson, Clallam and Kitsap Counties. For more information call 360-774-0848.

Baker 4 hire: Offset Bakery will cater your next event. Cookies, cakes, scones, quiche. Pies the limit. Email offsetbakerywashington@gmail.com

HEALTH & BEAUTY

Physical Therapy in Port Ludlow. Active Life Physical Therapy. Our services include balance training, spinal rehabilitation, vertigo treatment, and joint replacement therapy. Medicare accepted. 360-437-2444. Michael@activelifetherapy.com.

Tootsies: Manicures & Pedicures. 7551 Oak Bay Rd (across from Port Ludlow Fire Hall) Available by appointment, 360-437-2332. Neighborhood fun!

Caregiver Available in Port Ludlow. Providing in home care services, light housekeeping, errand and grocery assistance, medical transportation, and companionship. Certified and Experienced. Call or text Susan at 360-301-0200.

A cleaner healthier body fixes itself. Safely detox heavy metals and Volatile Organic Compounds (VOC's) from the body. Lose weight safely/effectively. Catherine 360-774-1431.

Sacred Healing Arts: Acupuncture, Sound healing, barefoot massage, cranial and nerve therapies to clear unprocessed emotional trauma to connect you with your embodied joy! Contact Jillian Rifkind L.Ac, EAMP at 360-523-2091 or visit joypointclinic.com. 9481 Oak Bay Road.

Soul Serenity Myofascial Wellness: Sherry Brown, LMT Myofascial Specialist, J.F.Barnes Method © Expert Level Therapist 24 yrs Experience. Offering Gentle, Effective and Lasting Treatments for Chronic Pain, Migraines, TMJ/Neck, Shoulder, Carpal Tunnel, Sciatica,

Hip, Knee, Plantar Fasciitis. Work and Sports injuries. Pre and Post Surgical Care, Scar Release. Mobility Improvement, Stress, Anxiety, Trauma & PTSD. Lymphatic Drainage, And more! No case too complicated. Astounding results. Highly Recommend by Dr's, PT's, and many other health professionals. By Appointment Only. 111 Village Way. Book on line: www.SoulSerenity.Biz or Call 253-961-7595

Experienced Certified Home Health Aide – Available in Port

Ludlow: Compassionate, reliable care for those in need of support. Services include companionship, shopping, light housekeeping, meal preparation, personal hygiene assistance, and transportation to medical appointments. Local Port Ludlow resident with references. Call or text Beth at 831-320-6924.

HOME RENOVATION & DÉCOR

Quality Painting with Affordable Pricing. Exterior, interior. Pressure washing. Lots of local Port Ludlow references. Bonded & insured. License CBSPAP*917CD. Call Tony Forrest, owner, CBS Painting, for a free estimate. 360-633-5702.

Arnett's Affordable Home Improvement - All remodeling and home repair, Kitchen and Bath Specialist, Tile, Stone, Hardwood and Laminate flooring, Construction, and repair of Decks. "When you want it done right the first time-call us!!" Arnett General Construction 360-477-1935; WEB.constructiontilepro.com; CCDONARAG875DL; local references.

Ludlow Custom Contractors. Specializes in custom home painting, decks, & finish carpentry. Contractor's License #MOSHECJ994MC. Christopher Mosher, 360-301-9629. "Custom Designing Your Dreams."

JDG Construction Inc. 30 years in local business. Free estimates on remodel & new construction, 360-385-3287.

Do It Right Roofing & Construction. High quality roofing & construction & remodeling. Owner on every job. General contractor Reg. #DOITRIR943QL. Locally located in Port Ludlow. Excellent local references. 360-774-6348.

Professional Tile & Grout Cleaning/Sealing. Clean Grout Northwest, re-grouting, re-caulking. Cleaning & sealing, ceramic, porcelain, natural stone. Licensed, bonded, insured. Lic#GROUTGN905DJ, 360-621-1730. cleangROUTNW.com.

Call Kyle Home Repair: Handyman & Contractor. Licensed, bonded, insured. Experienced, dependable, professional. Always high-quality. Contact at kyle@callkylehomerepair.com or (360) 389-2007. Lic# CALLKKH77000

HOME SERVICES

Legion of Clean. Jefferson County's #1 Cleaning Service (2021-2025)! Professional, reliable, licensed, bonded, insured & woman-owned. Delivering spotless homes with care and excellence! Call/Text: 360-344-8409 legionofclean.com.

Pristine Clean Gutter and Moss Removal: Commercial and Residential. Tile, Comp, Cedar and Metal rooftops, Gutter repair, Moss prevention plans. Pressure Washing, Siding and Surfaces, Gutter Guards. Licensed and Insured. Call: 360-990-2679 or 360-440-2238.

Window Blind Restrings and Repairs. Most cases same day service. Give James a call @ R&M Services 360-301-2683, Port Ludlow Resident.

JC's Painting and More. Painting--drywall repair & finishing--carpentry-handyman tasks and more. 20% labor discount, with this ad, interior jobs, Nov-March. Free Estimates 360-550-6101. Lic. # JCSPAPM919DS. jcspaintingandmore.com.

Experienced house/pet sitter for travelers. Light hauling and helping hands. Outstanding references. Gary 425-422-9709

Home Maintenance & House-Sitting: Painting, electrical, plumbing, roof repair, drywall, light remodel, landscaping, decks, hauling, pressure washing, general labor, house and pet sitting services and more. Call or text. David 360-301-9012.

Pressure washing is our specialty. Make it look new again with Eco-Clean pressure washing services! Driveways, patios, decks and more. www.EcoCleanWA.com or call us 360-531-4821.

Overwhelmed? Need help housecleaning? Call Home Team Housecleaning 360-860-2774 sheryllara@hotmail.com. We've been a team since 2016: committed, punctual, honest, friendly and skilled. Excellent references.

QuilClean, LLC House Cleaning Service. Licensed, bonded, insured. Serving Port Ludlow to Quilcene. Call Bonnie 360-302-0379 or visit www.quilclean.com.

LANDSCAPE & YARD SERVICES

Brett's Stump Grinding. Goodbye ugly tree stumps! I'm professional, reliable, & reasonably priced. For info & to see before & after photos, go to bretts-stumpgrinding.com or call Brett Anibaldi at 360-774-1226.

Field's Tree Care LLC is a Certified Arborist here to help you with all your tree & shrub needs. Fine Pruning. Free Estimates. Licensed, bonded, insured. Lic. # FIELDTC876DH. Dan Field 360-994-0166.

Irrigation repair, maintenance, and automatic flower bed systems. Seasonal start up and shut down. Call Wayne 360-643-3114. Email waynegrassman@aol.com.

Green Sun Landscaping: Call today for your free estimate, retaining walls, sprinkler systems, patios, garden clean ups and more... your satisfaction our priority (360-620-3156)

LEGAL SERVICES

Secretarial Services. Call Cammy Brown, Peninsula Legal Secretarial Services, LLC, 360-301-2590, cammybrown.com, for all your business and legal secretarial needs. Transcription, preparation of legal and business documents, typing projects, etc. I now have a second office inside the Post Office in Port Ludlow. Same phone, etc. By appointment only.

Notary Public: For Notary Public services call Cammy Brown, Peninsula Legal Secretarial Services LLC, 360-301-2590, located in Kivley Center, Port Hadlock and the Post Office in Port Ludlow, by appointment only.

MISCELLANEOUS

Rare Earth Music Studio. Lessons in Guitar, Piano, Voice, Ukulele, Mandolin, Composition, Music Theory. Serving Port Ludlow, Chima-cum, Port Hadlock-Irondale, Port Townsend. Contact RareEarthMusicStudio.com/contact/

Maluhia Creative. Dance into the aloha spirit through hula, Hawaiian culture, and connection! Classes in Port Hadlock Monday evenings, women 18+ Info maluhiaokalani@gmail.com (425)280-6014

RV/BOATING/TRAVEL

RV Storage. South Bay, 1 mile west of Hood Canal Bridge on Hwy. 104. Call Shirley, 360-437-9298.

Financial Disclosure

The *Port Ludlow Voice* is a 501(c)(4) organization. Its entire staff consists of unpaid volunteers. All writing and editing is done in the homes of staff members on their personal computers. The production editor formats each issue and provides an electronic copy to the printer. The *Voice* is delivered at no cost to readers on all U.S. Post Office carrier routes in the Master Planned Resort (MPR).

Financial support for publishing the *Voice* each month comes from advertising, subscriptions and contributions primarily from community organizations. Average monthly income is:

1. Ludlow Maintenance Commission (LMC).....	\$300
2. South Bay Community Association (SBCA).....	\$300
3. Port Ludlow Village Council (PLVC).....	\$200
4. Display Advertising	\$6,050
5. Classified Advertising	\$1,287
6. Subscriptions.....	\$49
7. Web Advertising.....	\$108

Subscriptions: Per year \$42; \$3.50 per month. Gift issue, \$5

This issue proofread by: Gary Hammond, Liz Wise, Karen Hashagen, Ellen Betit, Dana Steward and Dave Cunningham.

©2025 **Port Ludlow Voice.** All rights reserved. Printed in the U.S.A. No part of this publication may be reproduced in any form without express written permission of the *Port Ludlow Voice*.

Paper Content: The *Voice* uses stock that is acid free and meets the sourcing requirements of the Sustainable Forest Initiative.

The printing of an article, or of classified or display advertising, does not necessarily constitute endorsement by the *Voice*.



Located in Port Ludlow with a Satellite Office in Seattle
Serving Jefferson, Clallam, Kitsap, Pierce, King & Snohomish
Counties



Amanda Wilson
Attorney at Law



Hunter Chapa
Associate Attorney

Estate Planning: Trusts & Wills
Probate & Trust Administration
Medicaid Planning, Elder Law
Guardianships, Estate Disputes,
Powers of Attorney, Health Care Directives
Community & Separate Property Agreements
Minors Trusts, Special Needs Trusts, Pet Trusts
A/B Tax Shelter Trusts
Tax Planning & Wealth Preservation

Contact Us for a Complimentary Estate Planning
Consultation www.NWEPP.com or 360-437-4172

©2021

Becky Belding
Bill Barnet
Sarah Perkins

New Year, New Goals. . . New Home?

Whether you're planning to buy, sell
or just want to know your home's
market value, our local experts can
help you start 2026 informed and
empowered.

Windermere
REAL ESTATE
PORT LUDLOW

360 797-9344 9483 Oak Bay Rd

**SALISH SEA
FELLOWSHIP**

Join us for Sunday Services!
(2:00 at CUMC, 130 Church Lane, Port Hadlock)

1/4: Joe Euro delights with his words & music
1/18: Richard Meadows: Invitation Cycles

Find out more information at salishseafellowship.org.

WWW.PUPLETTERS.COM

**FUN MAIL???
PUP YAY!!**

LET US WRITE TO YOU!

Grace Christian Center
Solid, Spirit-Filled Bible Teaching

Grace Christian Center is celebrating its 23rd year of serving our Lord Jesus here
in the Olympic Peninsula. Planted in Port Ludlow, Grace Christian Center is a
regional church, with people traveling from all over the County to worship with
us. The Bible is our text book—we work hard to bring relevant teaching with an
understanding of history, context, and current application
in our very real and daily lives.

Grace Christian Center: Where we love Jesus first and foremost; where we love
His Word and His presence; where we love His people, where your family can be
a family in the presence of the Lord.

We invite you to worship with us Sunday mornings at 10.

Pastors Kevin and Sherri Hunter
Senior Pastors

360-821-9680 360-821-9684

Port Ludlow Conference Center • 200 Olympia Place, Port Ludlow
www.gracechristiancenter.us

Loving Jesus and Loving Each Other



dermatology
oncology
orthopedic
rheumatology
pulmonology
neurology
respiratory
gynecology
cardiology
urology

Right here when you need **specialty** care.

Jefferson Healthcare's new building provides space for new specialty services, as well as expanded space for existing services our community relies on. More than bricks and mortar, this expansion represents our commitment to keeping care local.

Learn more: jeffersonhealthcare.org